

49/114

DRAWING NUMBER

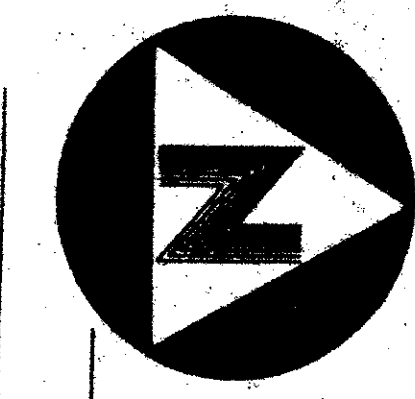
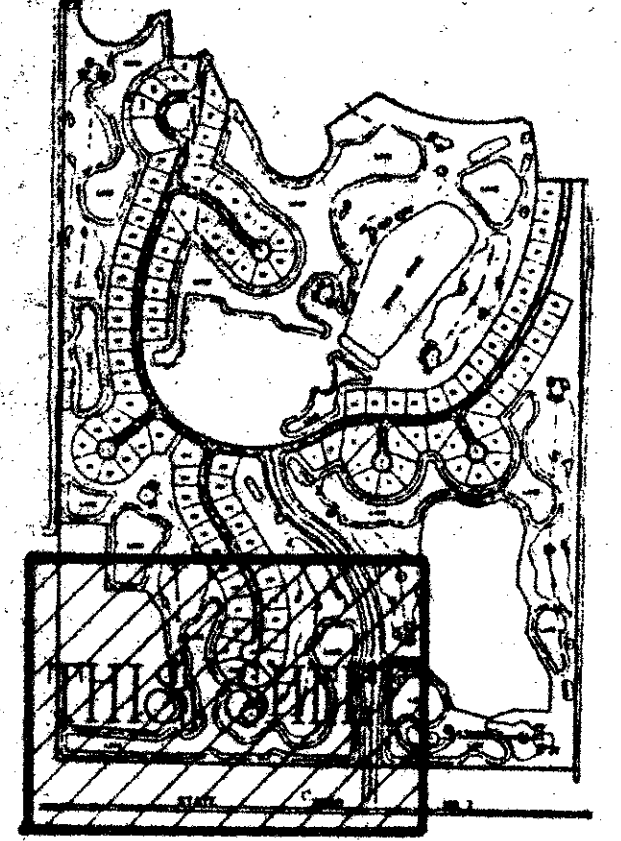
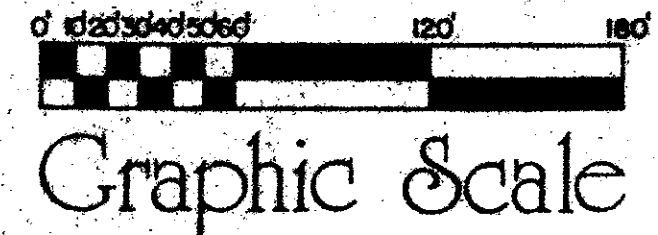
DRAWING NUMBER

DRAWING NUMBER

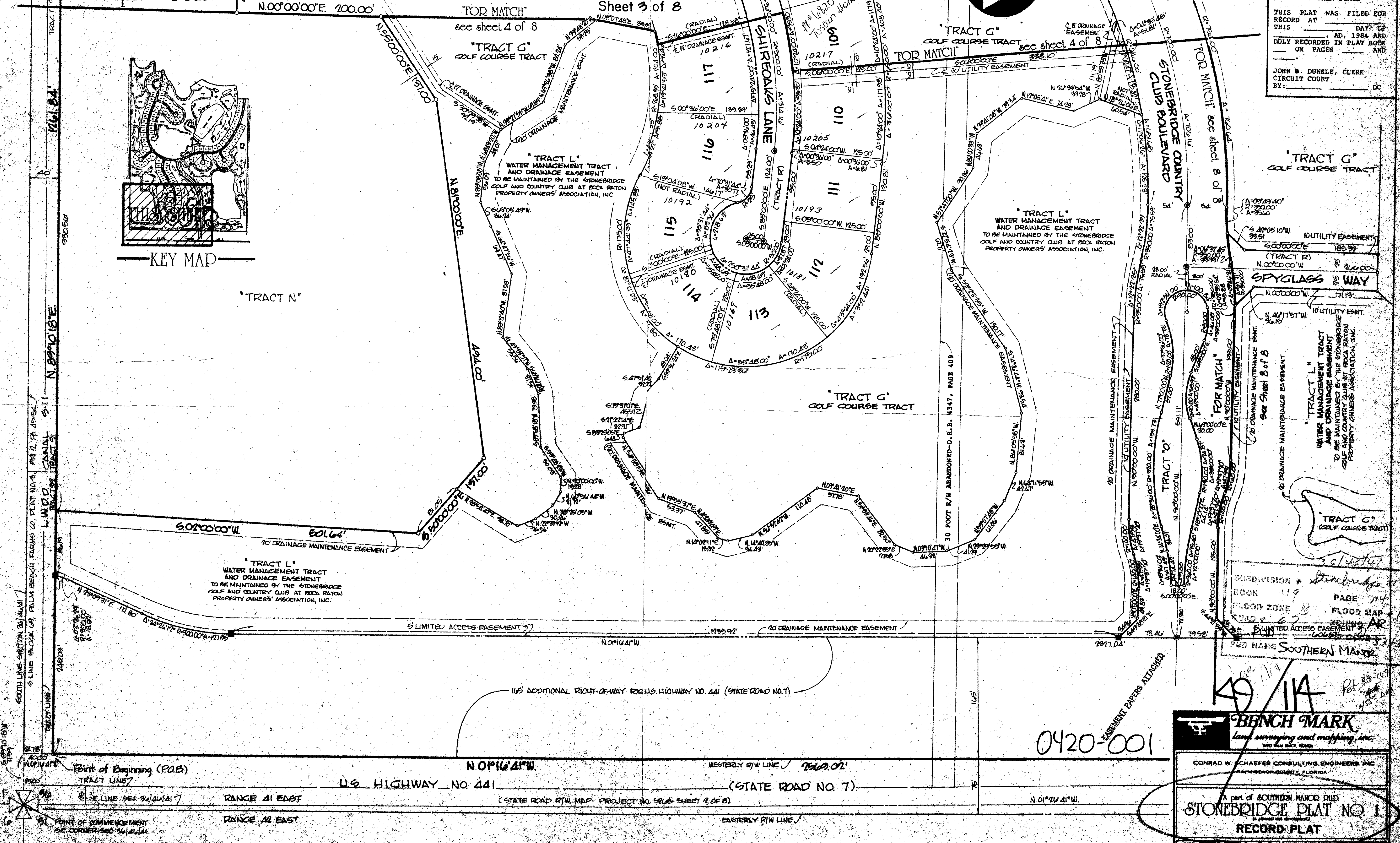
# A part of SOUTHERN MANOR P.U.D. STONEBRIDGE PLAT NO. 1

(a planned unit development)  
Lying in the South One-Half (S.1/2) of Block 69, Palm Beach Farms Company, Plat No. 3, Plat Book 2, Pages 45-54 (Inclusive),  
Section 36, Township 46 South, Range 41 East, Palm Beach County, Florida  
June, 1984  
Sheet 3 of 8

49/114



STATE OF FLORIDA  
COUNTY OF PALM BEACH  
THIS PLAT WAS FILED FOR  
RECORD AT \_\_\_\_\_ DAY OF \_\_\_\_\_  
AD, 1984 AND  
DULY RECORDED IN PLAT BOOK  
ON PAGES \_\_\_\_\_ AND \_\_\_\_\_  
JOHN B. DUNKLE, CLERK  
CIRCUIT COURT  
BY: \_\_\_\_\_ DC



Subdivision Stonebridge  
BOOK 49 PAGE 114  
FLOOD ZONE B FLOOD MAP  
ZONING AR  
LIMITED ACCESS EASEMENT  
PUB  
SOUTHERN MANOR

**BENCH MARK**  
land surveying and mapping, inc.  
with 20 year license

CONRAD W. SCHAEFER CONSULTING ENGINEERS, INC.  
2800 BENCH MARK COURT, FLORIDA  
A part of SOUTHERN MANOR P.U.D.  
**STONEBRIDGE PLAT NO. 1**  
(a planned unit development)  
**RECORD PLAT**

DATE	FILED	DATE	FILED
1984	11/14	1984	11/14

THIS INSTRUMENT WAS PREPARED BY WILLIAM R. VAN CAMPEN IN THE  
OFFICES OF BENCHMARK LAND SURVEYING AND MAPPING, INC., 2833  
EXCHANGE COURT, WEST PALM BEACH, FLORIDA, 33409, (305-669-2111)

0420-001