

49/116

DRAWING NUMBER

DRAWING NUMBER

DRAWING NUMBER

STONEBRIDGE PLAT NO. 1

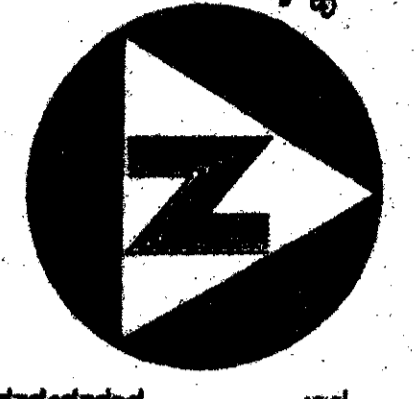
(a planned unit development)

Lying in the South One-Half (S.1/2) of Block 69, Palm Beach Farms Company, Plat No. 3, Plat Book 2, Pages 45-54 (Inclusive),
Section 36, Township 46 South, Range 41 East, Palm Beach County, Florida

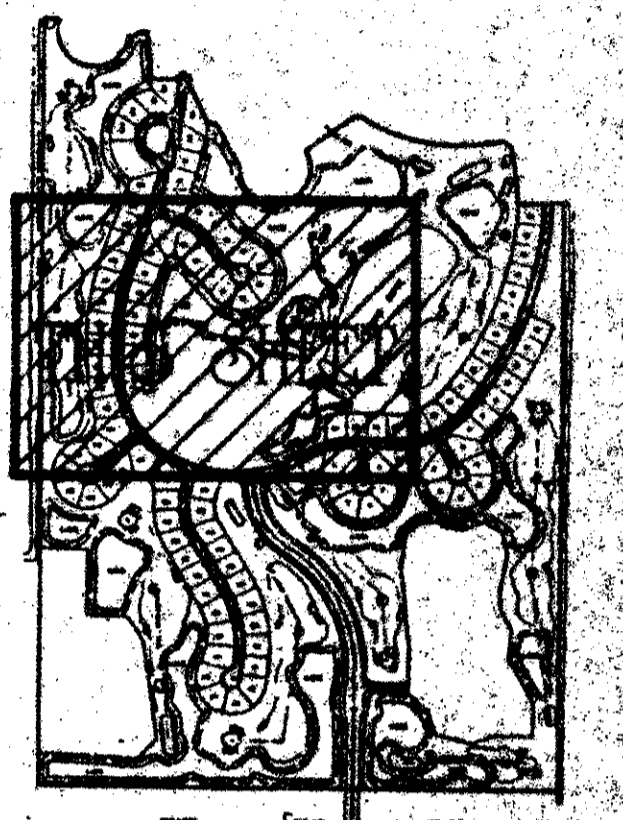
June, 1984
Sheet 5 of 8

49/116

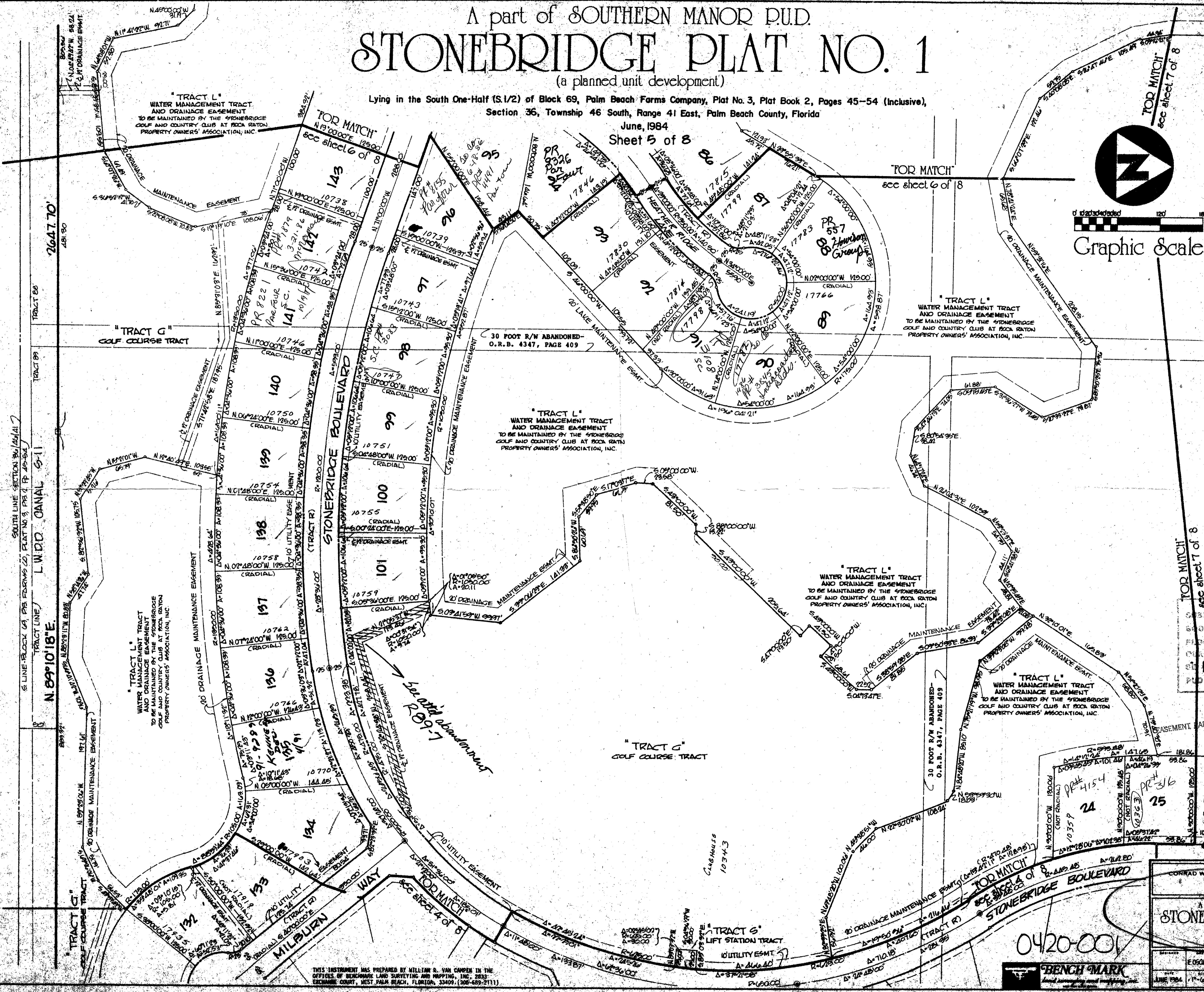
STATE OF FLORIDA
COUNTY OF PALM BEACH
THIS PLAT WAS FILED FOR
RECORD AT _____ DAY OF
THIS _____ AD, 1984 AND
DULY RECORDED IN PLAT BOOK
ON PAGES _____ AND
JOHN B. DONKLE, CLERK
CIRCUIT COURT BY: _____ DC



Graphic Scale



KEY MAP



SECTION 36
49 PAGE 116
PLAT NO. 1
ZONING AR
SUD ZIP CODE 33413
PLD NAME SOUTHERN MANOR

CONRAD W. SCHAEFER CONSULTING ENGINEERS, INC.
PALM BEACH COUNTY, FLORIDA

A part of SOUTHERN MANOR P.U.D.
STONEBRIDGE PLAT NO. 1
RECORD PLAT

RECORDED	INDEXED
JUNE 1984	1-60

THIS INSTRUMENT WAS PREPARED BY WILLIAM R. VAN CAMPEN IN THE OFFICES OF BENCHMARK LAND SURVEYING AND MAPPING, INC. 2833 EXCHANGE COURT, WEST PALM BEACH, FLORIDA 33409 (306-659-2111)