

49/139

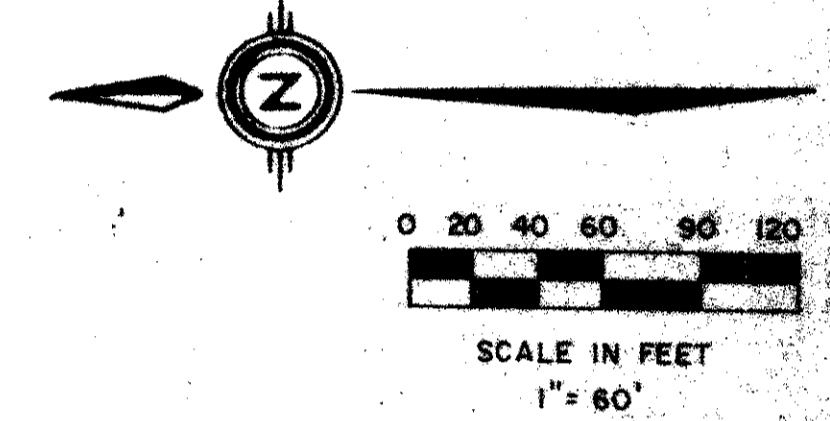
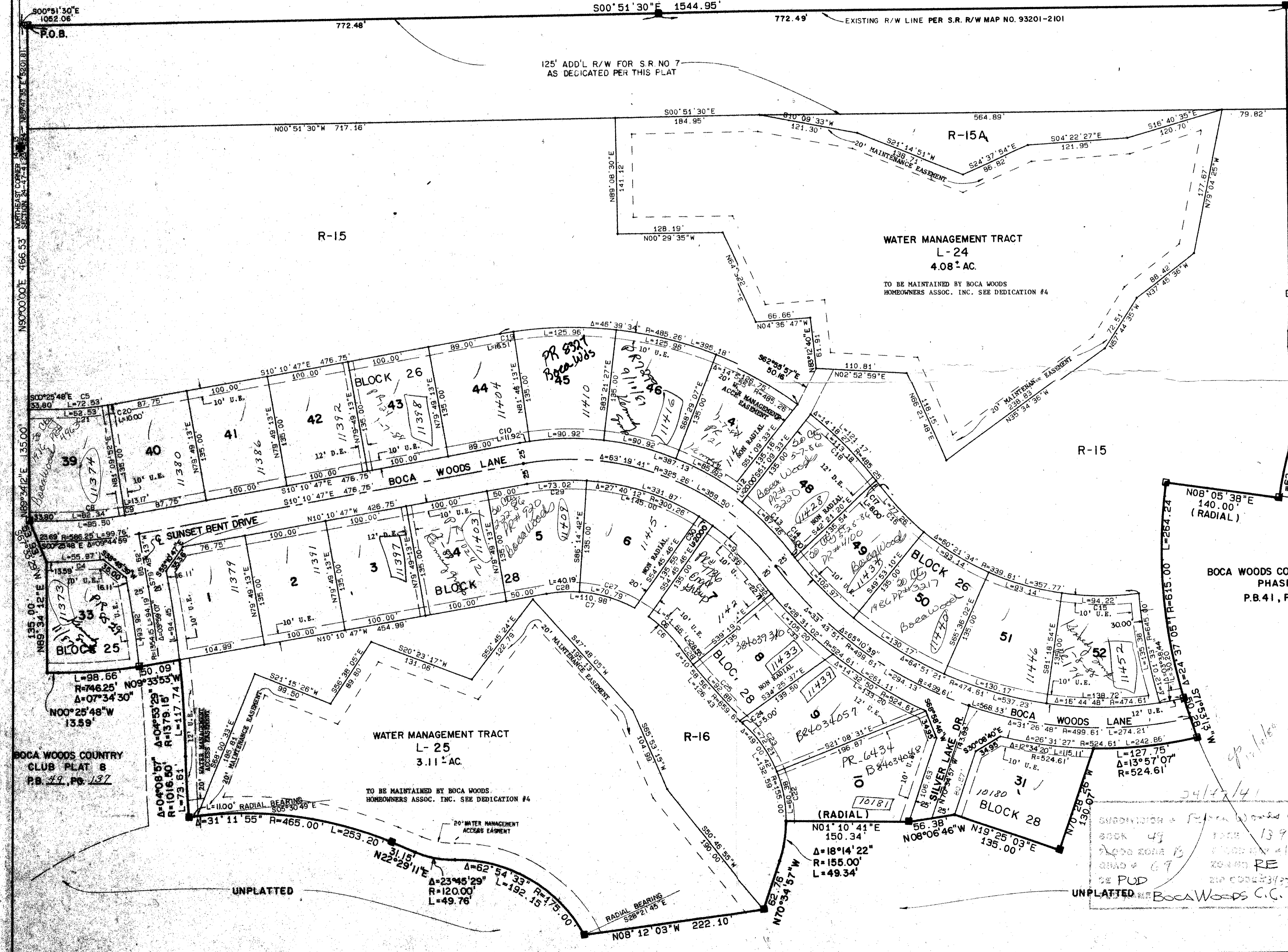
BOCA WOODS COUNTRY CLUB PLAT 9

A PART OF BOCA WOODS COUNTRY CLUB, A P.U.D.
SITUATE IN SECTION 24, TOWNSHIP 47 SOUTH, RANGE 41 EAST,
PALM BEACH COUNTY, FLORIDA.

SHEET 2 OF 2

49/139

STATE OF FLORIDA
COUNTY OF PALM BEACH
THIS PLAT WAS FILED FOR
RECORD AT _____ DAY OF
AD. 1988 AND DULY RECORDED
IN PLAT BOOK _____ ON PAGE
AND _____
JOHN B. DUNKLE, CLERK
CIRCUIT COURT
BY: _____ B.C.

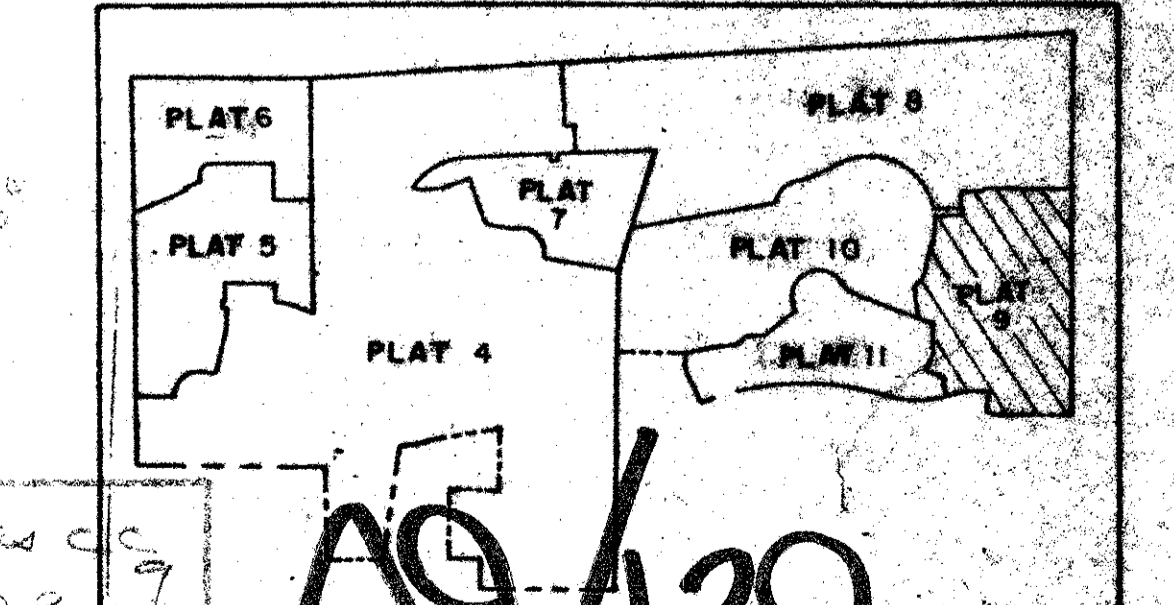


NO.	DELTA	RADIUS	LENGTH
C1	88°41'48"	25.00	38.70
C2	88°00'00"	25.00	38.27
C3	51°14'47"	61.33	55.97
C4	9°44'59"	426.25	72.53
C5	17°54'40"	165.26	111.56
C6	38°28'43"	165.26	111.56
C7	8°24'19"	561.25	82.34
C8	1°20'39"	561.25	13.17
C9	1°57'00"	350.25	11.82
C10	14°03'15"	350.25	68.92
C11	3°16'19"	350.25	20.00
C12	14°18'27"	390.25	87.46
C13	0°36'13"	474.61	9.00
C14	1°20'39"	426.25	10.00
C15	15°53'45"	339.61	94.22
C16	13°02'04"	339.61	77.26
C17	0°56'41"	485.25	8.00
C18	13°21'47"	485.25	113.17
C19	1°57'00"	485.25	15.51
C20	1°20'39"	426.25	10.00
C21	8°24'19"	426.25	62.53
C22	22°19'12"	155.00	60.38
C23	26°41'31"	155.00	72.21
C24	0°26'04"	659.61	8.00
C25	9°04'44"	659.61	82.88
C26	2°28'49"	659.61	28.55
C27	24°32'38"	165.26	70.79
C28	13°56'04"	165.26	40.19
C29	13°56'04"	300.26	73.92
C30	3°48'44"	300.26	200.00
C31	17°54'40"	300.26	93.86
C32	2°28'49"	524.61	22.71
C33	11°29'24"	524.61	105.20

BOCA WOODS COUNTRY CLUB
PHASE I
P.B. 41, PGS. 80-83

0215-301

SHEET LOCATION MAP



Meridian Surveying and Mapping Inc.
WEST PALM BEACH, FLORIDA
BOCA WOODS COUNTRY CLUB PLAT 9

DRAWN	M.E.H.	DATE	JAN. 1984
CHECKED	R.A.H.	SCALE	1" = 60'
DRAWING NO.	82-P-05		

DRAWING NUMBER

DRAWING NUMBER

DRAWING NUMBER

PLAN HOLD CORPORATION
IRVINE, CALIFORNIA
REGISTERED BY NUMBER 07348

PLAN HOLD CORPORATION
IRVINE, CALIFORNIA
REGISTERED BY NUMBER 07348

PLAN HOLD CORPORATION
IRVINE, CALIFORNIA
REGISTERED BY NUMBER 07348

PLAN HOLD CORPORATION
IRVINE, CALIFORNIA
REGISTERED BY NUMBER 07348