

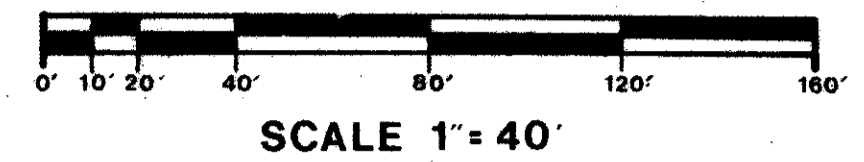
DRAWING NUMBER  
49/155

155

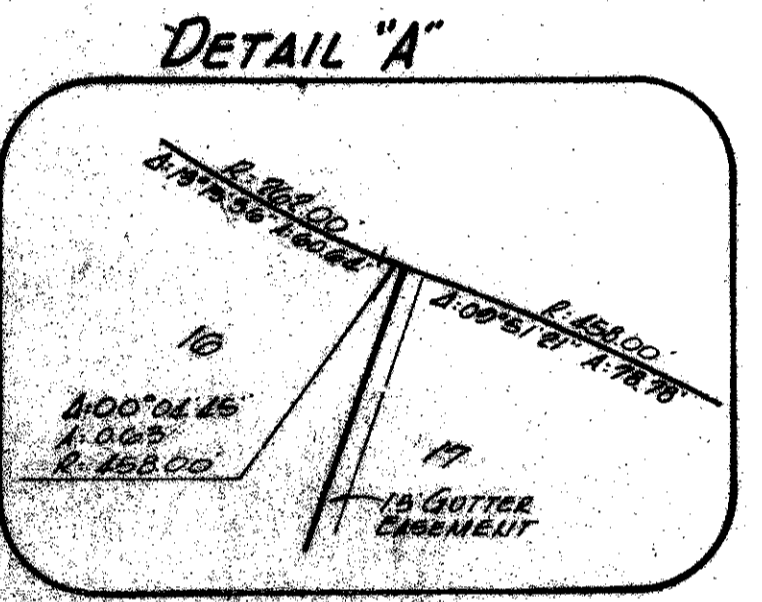
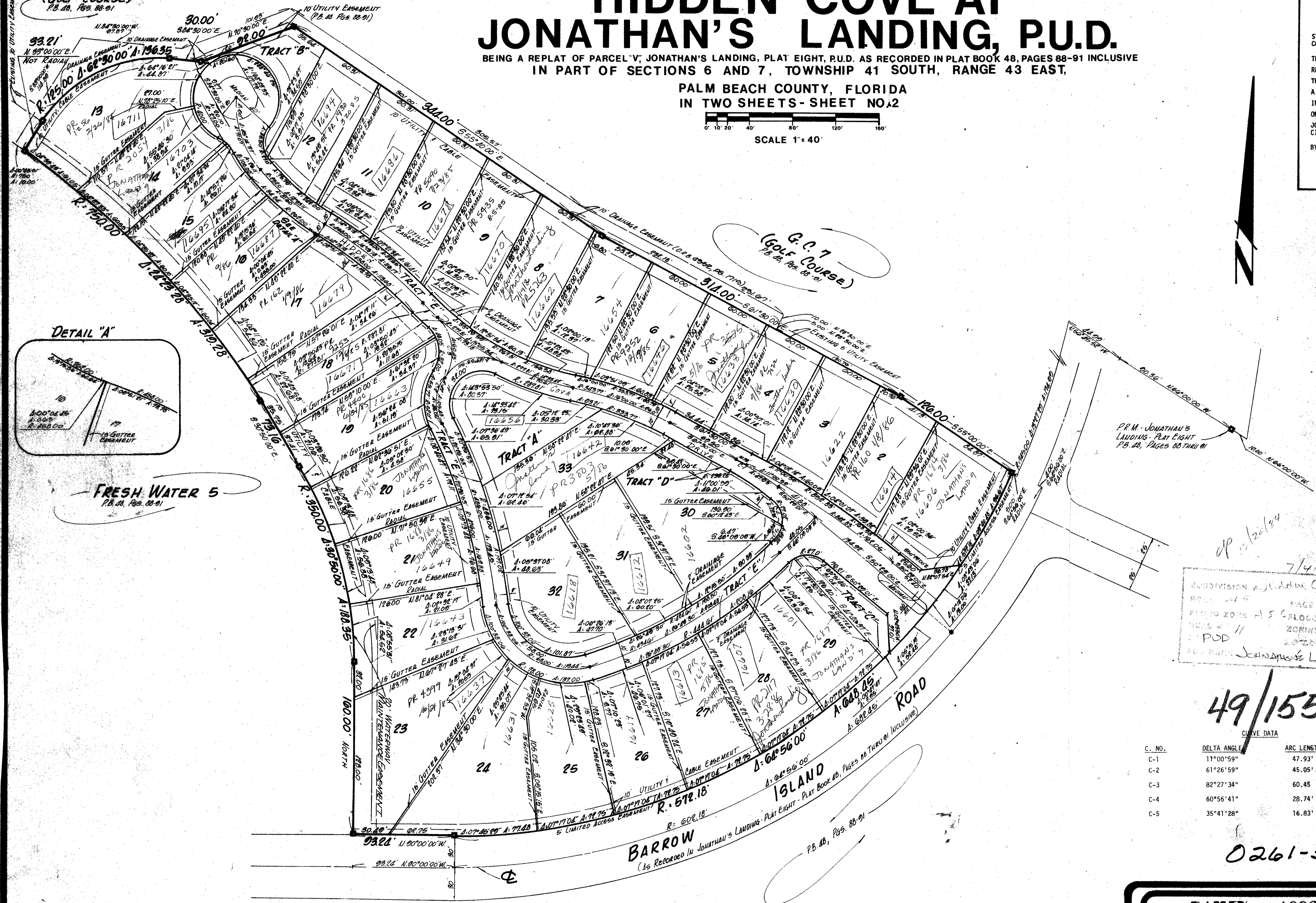
# HIDDEN COVE AT JONATHAN'S LANDING, P.U.D.

BEING A REPLAT OF PARCEL V, JONATHAN'S LANDING, PLAT EIGHT, P.U.D. AS RECORDED IN PLAT BOOK 48, PAGES 88-91 INCLUSIVE IN PART OF SECTIONS 6 AND 7, TOWNSHIP 41 SOUTH, RANGE 43 EAST,

PALM BEACH COUNTY, FLORIDA  
IN TWO SHEETS - SHEET NO. 2



STATE OF FLORIDA,  
COUNTY OF PALM BEACH  
THIS PLAT WAS FILED FOR  
RECORD AT \_\_\_\_\_ M.  
THIS \_\_\_\_\_ DAY OF \_\_\_\_\_  
A.D., 198 \_\_\_\_\_ AND DULY RECORDED  
IN PLAT BOOK \_\_\_\_\_  
ON PAGES \_\_\_\_\_ AND \_\_\_\_\_  
JOHN B. DUNKLE, CLERK  
CIRCUIT COURT  
BY: \_\_\_\_\_ D.C.



7/4/15  
SUBDIVISION: JONATHAN'S LANDING  
BLOCK: 44  
PAGE: 155  
PLAT: ZONE A-5 G-1000-108B  
P.U.D.: 11  
ZONING: RM  
ASSEMBLY: 33458  
REPLAT: JONATHAN'S LANDING

49/155

C. NO.	DELTA ANGLE	ARC LENGTH	RADIUS
C-1	11°00'59"	47.93'	249.28'
C-2	61°26'59"	45.05'	42.00'
C-3	82°27'34"	60.45'	42.00'
C-4	60°56'41"	28.74'	27.02'
C-5	35°41'28"	16.83'	27.02'

0261-302

**DAILEY AND ASSOCIATES**  
LAND SURVEYORS  
4115 WEST INDIANTOWN ROAD  
JUPITER, FLORIDA 33468  
PHONE: (305) 746-8424

DRAWING NUMBER

DRAWING NUMBER

DRAWING NUMBER

PLAN-HOLD CORPORATION • IRVINE, CALIFORNIA  
RECORD BY NUMBER 07348