

49/175

175

PROVENCE
"TRACT 20" OF VIA VERDE - A P.U.D.
 SITUATE IN SECTIONS 22 & 23, TOWNSHIP 47 SOUTH, RANGE 42 EAST,
 PALM BEACH COUNTY, FLORIDA. SHEET 2 OF 2

STATE OF FLORIDA
 COUNTY OF PALM BEACH

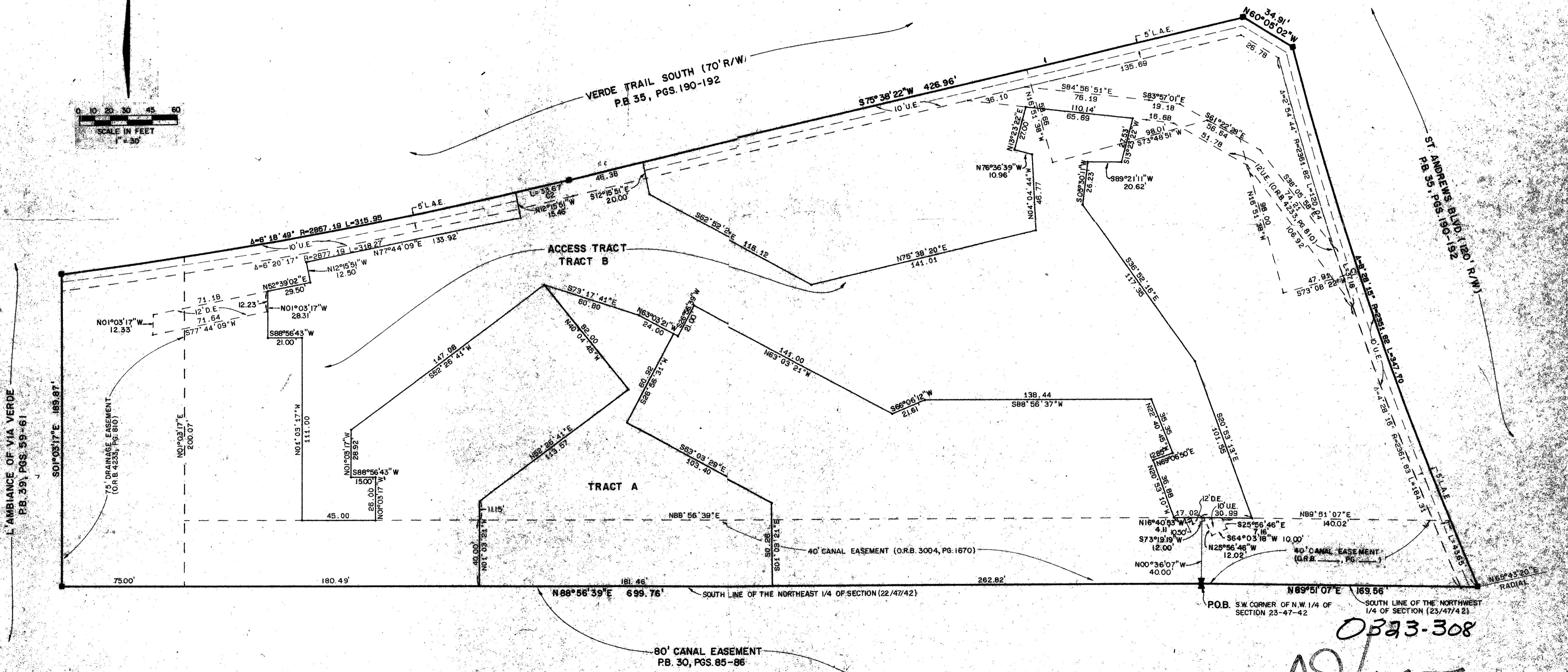
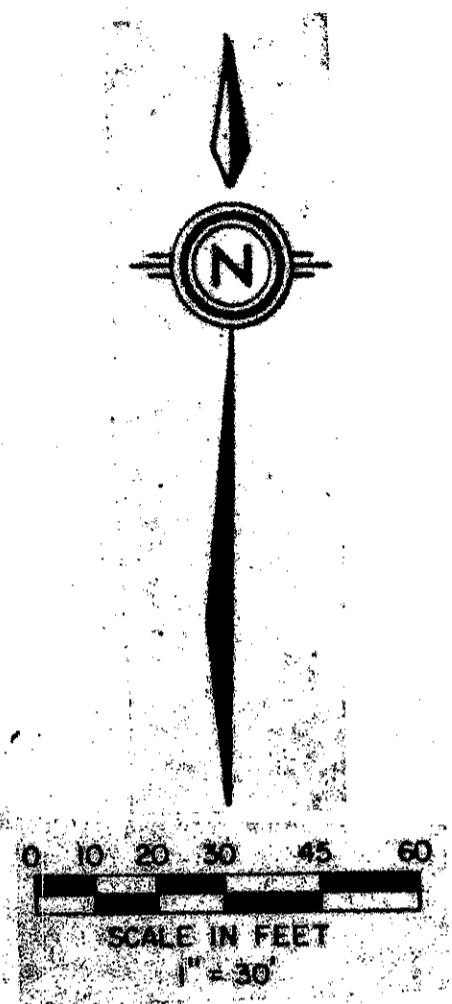
THIS PLAT WAS FILED FOR
 RECORD AT _____
 THIS _____ DAY OF _____
 AD, 1984 AND DULY RECORDED
 IN PLAT BOOK _____ ON PAGES
 AND _____

JOHN B. DUNKLE, CLERK
 BY: _____, D.C.

DRAWING NUMBER

DRAWING NUMBER

DRAWING NUMBER



C-NO.	DELTA	LENGTH	RADIUS
C1	00°34'37"	37.18	2381.83
C2	00°40'22"	33.67	2367.14

0393-308

49/175

Meridian
 Surveying and mapping Inc.
 WEST PALM BEACH, FLORIDA

DRAWN	M.E.H.	DATE	8/24/84
CHECKED		SCALE	1" = 30'
DRAWING NO.	84-P-052		

PROVENCE