

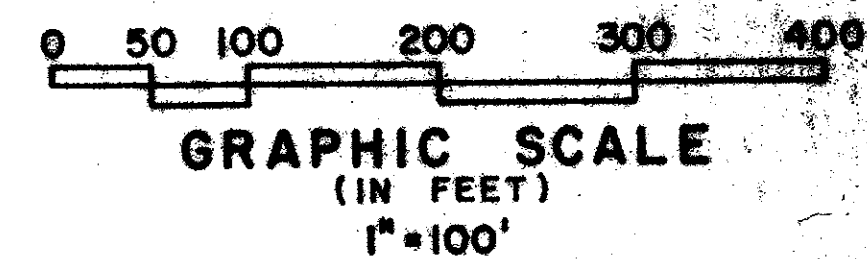
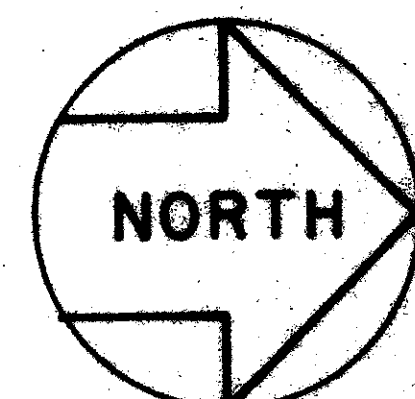
50/24

50/24

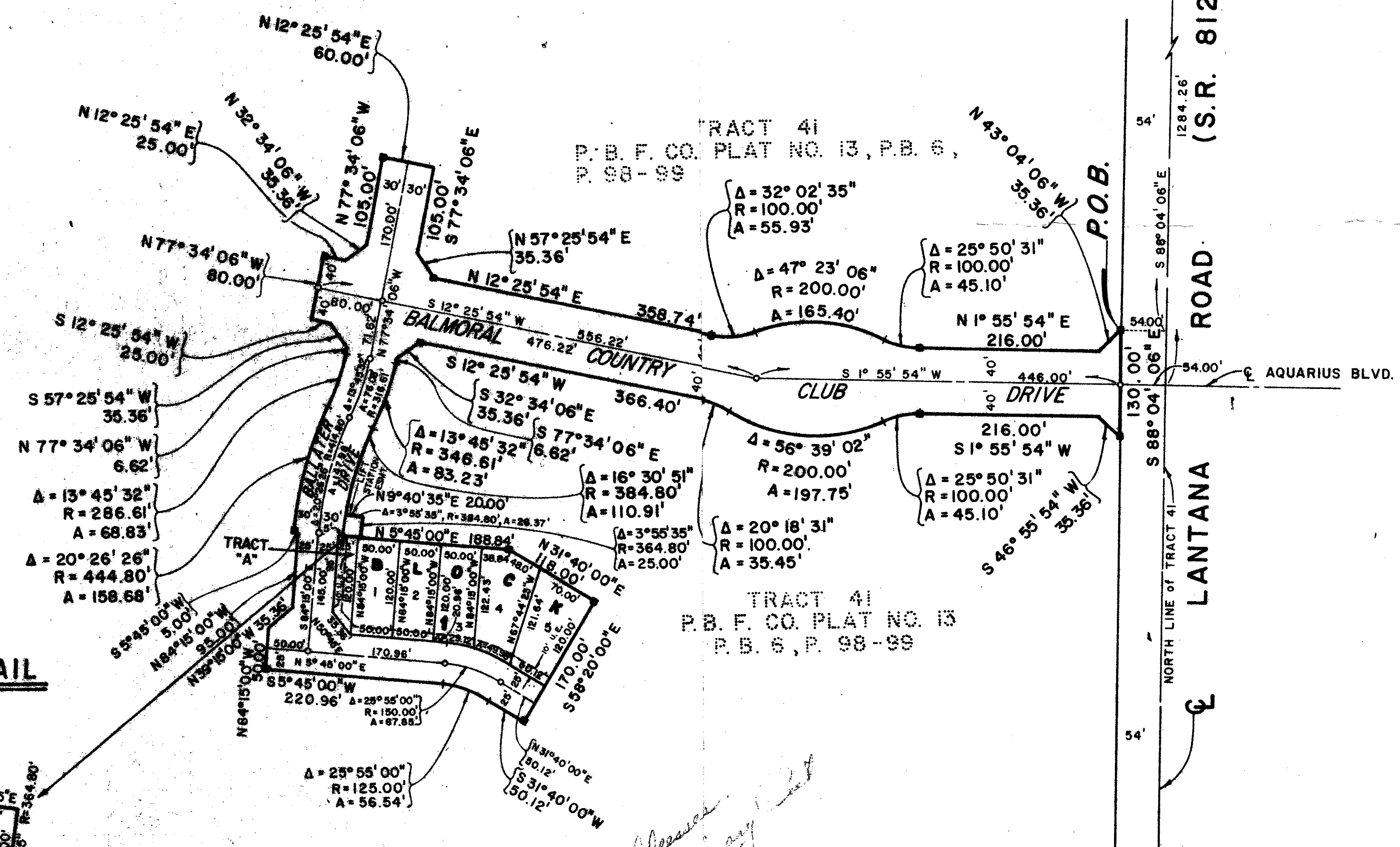
A PLANNED UNIT DEVELOPMENT BALMORAL COUNTRY CLUB PLAT 1

PALM BEACH COUNTY, FLORIDA
SHEET 2 OF 2 JULY, 1984

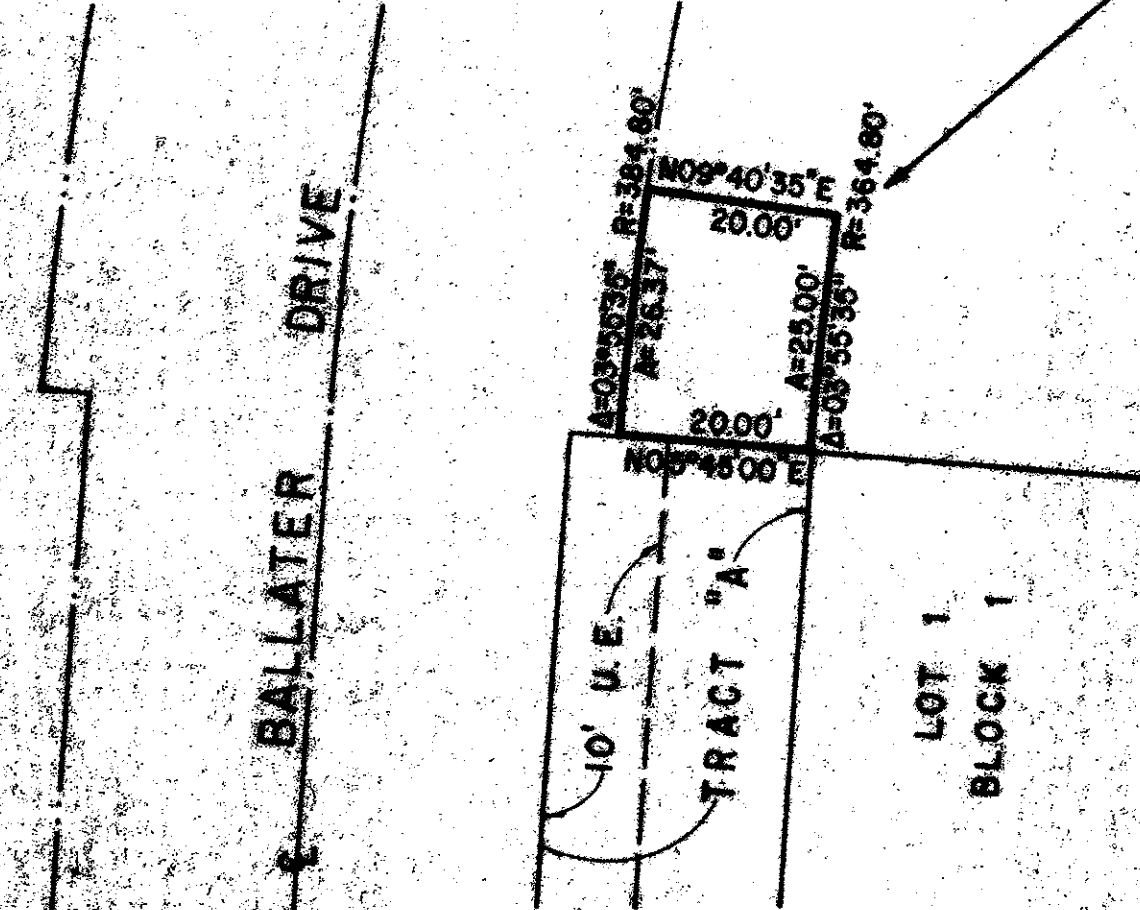
STATE OF FLORIDA
COUNTY OF PALM BEACH
This Plat was filed for record on _____ day of _____, 1984
and duly recorded in Plat Book No. _____ on Page _____
By John B. Dunkle, Clerk Circuit Court D.C.



NORTHWEST CORNER OF
LOT 2, TRACT 41,
T. 44 1/2 S., R. 42 E.



LIFT STATION EASEMENT DETAIL
SCALE: 1" = 20'



0199-300

50/24

BALMORAL C.C.

MICHAEL B. SCHORAH
& ASSOCIATES, INC.

ENGINEERS • PLANNERS • DEVELOPMENT CONSULTANTS

TEL. (305) 988-0080
1850 FOREST HILL BLVD., SUITE 205
WEST PALM BEACH, FLORIDA 33409

DRAWING NUMBER

DRAWING NUMBER

DRAWING NUMBER

PLAN HOLD CORPORATION • IRVINE, CALIFORNIA
REGISTERED NUMBER 07548

PLAN HOLD CORPORATION • IRVINE, CALIFORNIA
REGISTERED NUMBER 07548

PLAN HOLD CORPORATION • IRVINE, CALIFORNIA
REGISTERED NUMBER 07548