

DRAWING NUMBER

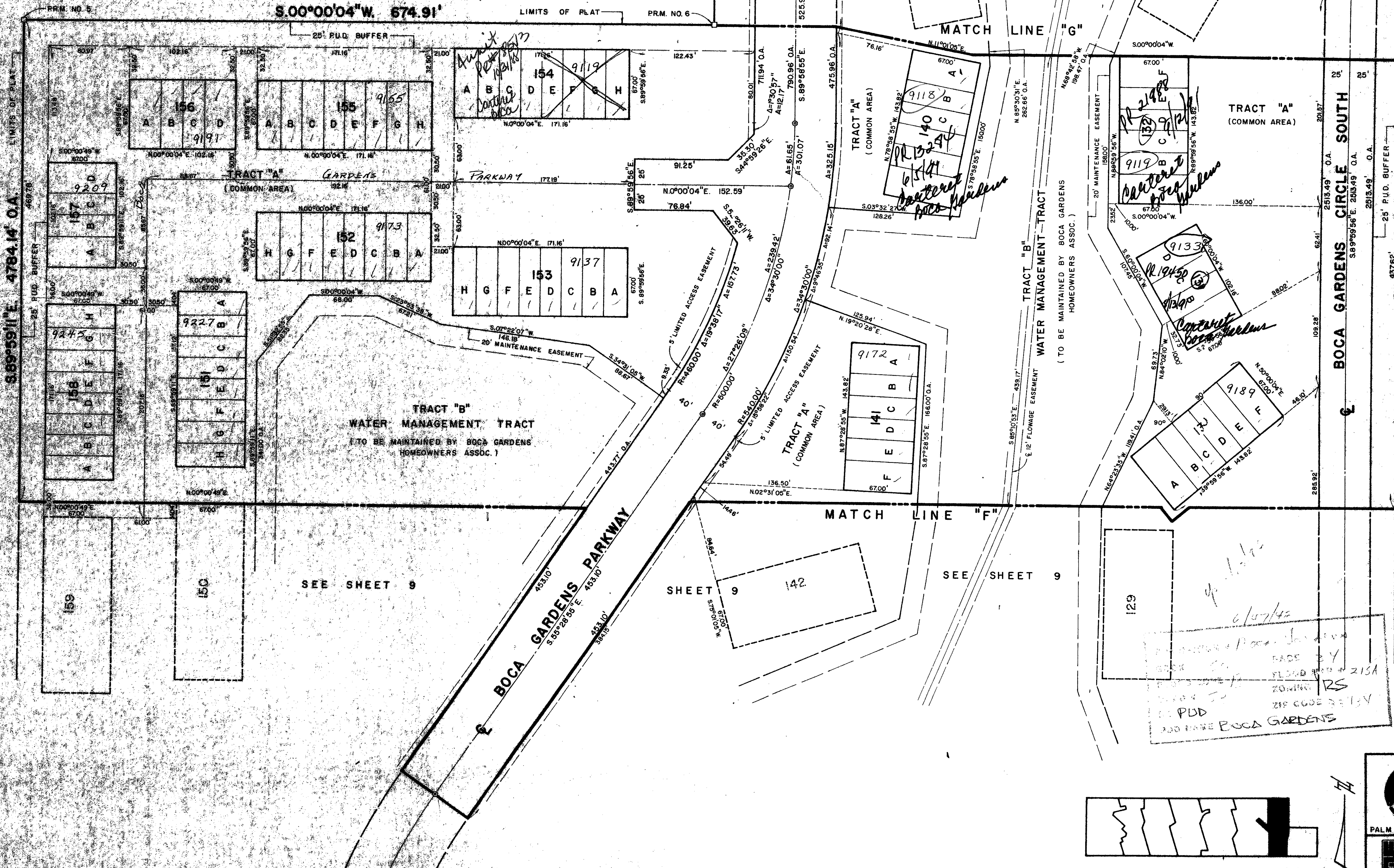
DRAWING NUMBER

DRAWING NUMBER

PLAN: HOLIDAY CORPORATION - IRVINE, CALIFORNIA
REGISTERED NUMBER: 07548

PLAN: HOLIDAY CORPORATION - IRVINE, CALIFORNIA
REGISTERED NUMBER: 07548

PLAN: HOLIDAY CORPORATION - IRVINE, CALIFORNIA
REGISTERED NUMBER: 07548



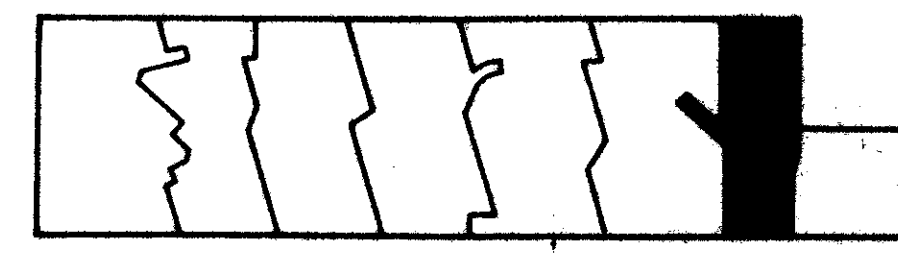
TYPICAL TOWNHOME DETAIL

TYPICAL TOWNHOME DETAIL

TYPICAL TOWNHOME DETAIL

0407-000

50/34



SHEET KEY MAP

PLAT OF

Boca Gardens
(A P.U.D.)

PALM BEACH COUNTY, FLORIDA

WILLIAM G. BRADLEY, INC.
CONSULTING ENGINEERS, LAND PLANNERS & SURVEYORS
9716 ALTERNATE A1A, LAKE PARK, FL 33410 • 888-888-8888

FIELD: M. BONIN	JOB NO: 83-1314 C	P.E.:	FG
OFFICE: R. RODRIG	DATE: AUGUST, 1994	DWG. NO.:	83-1314 C
CYC: 17/1	REV:	SHEET NO.:	OF 11