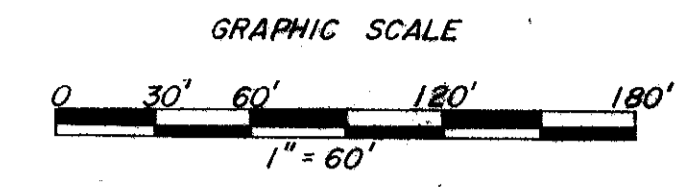
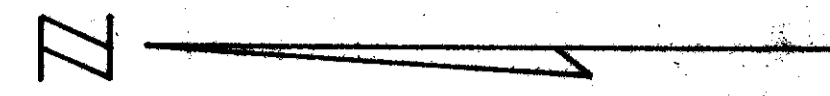


DRAWING NUMBER  
**50/46**

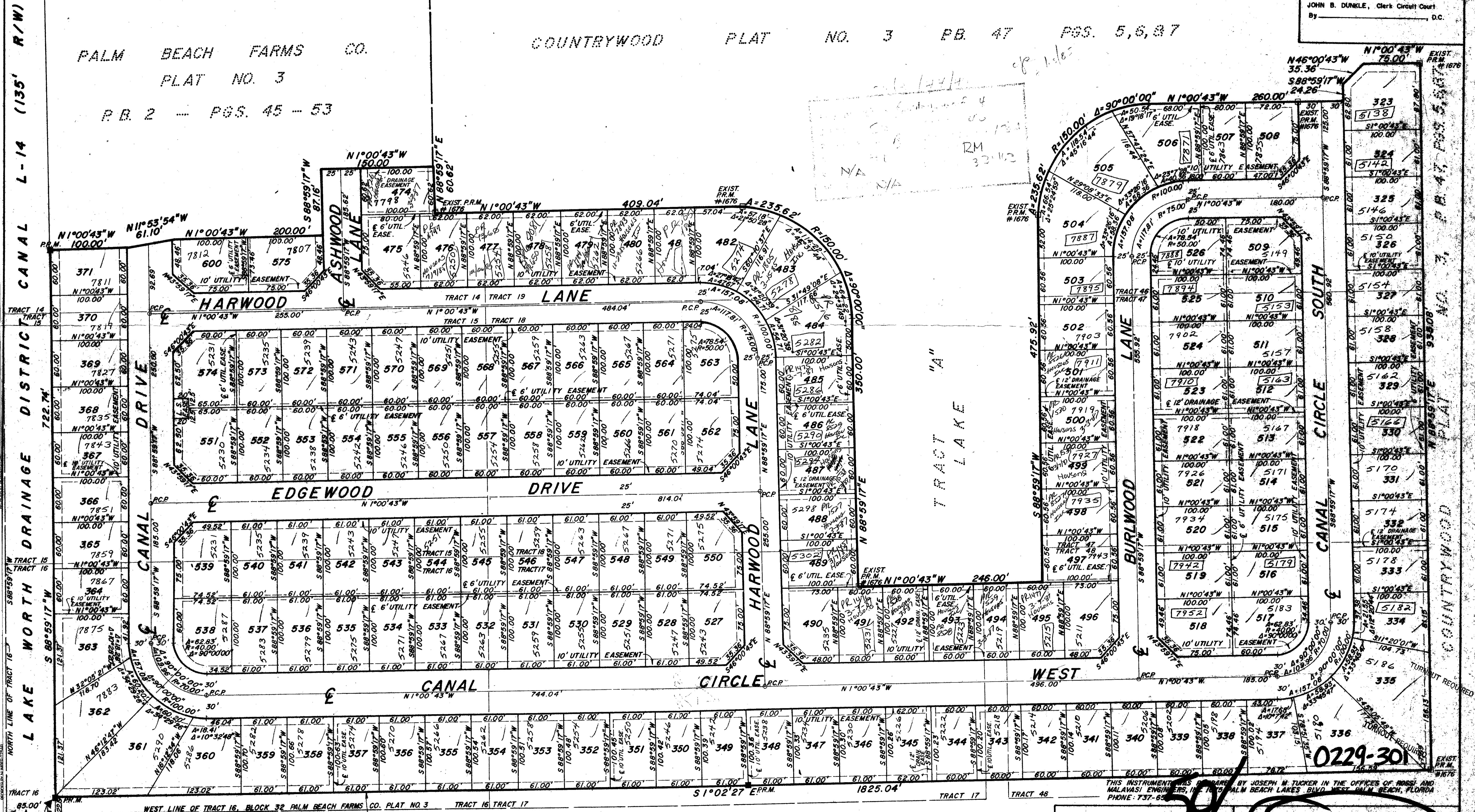
# COUNTRYWOOD PLAT NO. 4

BEING A REPLAT OF A PORTION OF THE PLAT OF PALM BEACH FARMS CO. PLAT NO. 3,  
P.B. 2 PGS. 45 THRU 53  
IN SECTIONS 32 AND 33 TOWNSHIP 44 SOUTH, RANGE 42 EAST  
PALM BEACH COUNTY, FLORIDA  
SHEET 2 OF 2 SHEETS SEPTEMBER, 1984

50/46



STATE OF FLORIDA  
COUNTY OF PALM BEACH  
This Plat was filed for record at \_\_\_\_\_ N.  
this \_\_\_\_\_ day of \_\_\_\_\_  
19\_\_\_\_, and duly recorded in Plat. Book No. \_\_\_\_\_  
on page \_\_\_\_\_  
JOHN B. DUNKLE, Clerk Circuit Court  
By \_\_\_\_\_, D.C.



DRAWING NUMBER

DRAWING NUMBER

DRAWING NUMBER

THIS INSTRUMENT WAS PREPARED BY JOSEPH M. TUCKER IN THE OFFICES OF ROSSI & MALINAS ENGINEERS, INC., 1000 PALM BEACH LAKES BLVD., WEST PALM BEACH, FLORIDA  
PHONE 737-6500

**ROSSI & MALINAS ENGINEERS, INC.**  
**COUNTRYWOOD PLAT NO. 4**

0229-301