

DRAWING NUMBER
50/65

GLENEAGLES PLAT ONE

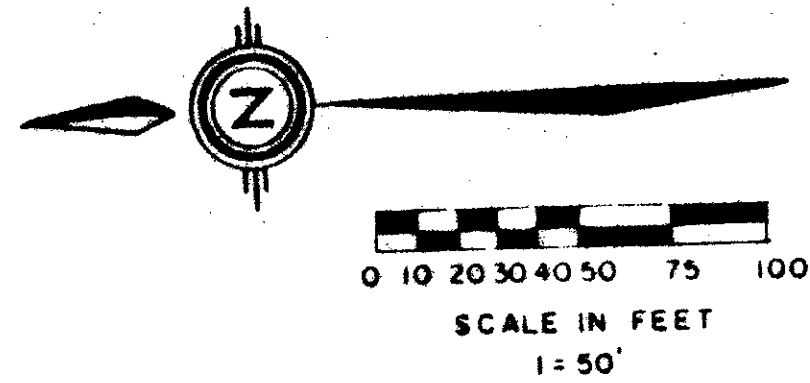
A PORTION OF COVENTRY A P.U.D.

65

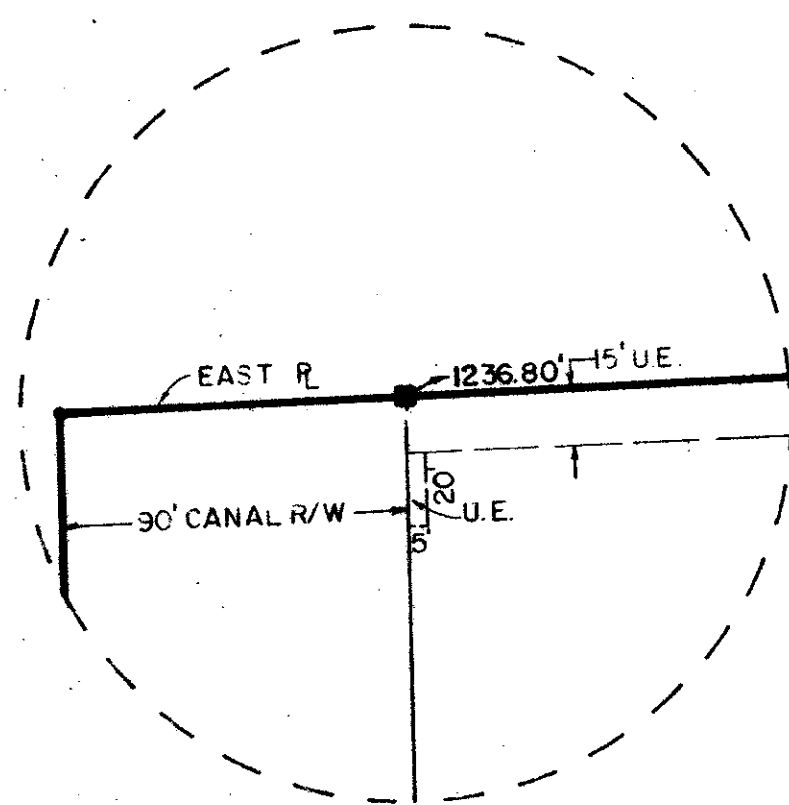
STATE OF FLORIDA
COUNTY OF PALM BEACH
THIS PLAT WAS FILED FOR
RECORD AT _____ DAY OF _____
AD. 1984 AND DULY RECORDED
IN PLAT BOOK _____ ON PAGES
_____ AND _____
JOHN B. DUNKLE, CLERK
CIRCUIT COURT
BY: _____, D.C.

SITUATE IN SECTIONS 21 AND 28, TOWNSHIP 46 SOUTH, RANGE 42 EAST, PALM BEACH COUNTY, FLORIDA. BEING A REPLAT OF A PORTION OF BLOCKS 21 AND 28 OF PALM BEACH FARMS COMPANY'S PLAT NO. 1, AS RECORDED IN PLAT BOOK 2, PAGES 26-28 OF THE PUBLIC RECORDS OF PALM BEACH COUNTY, FLORIDA.

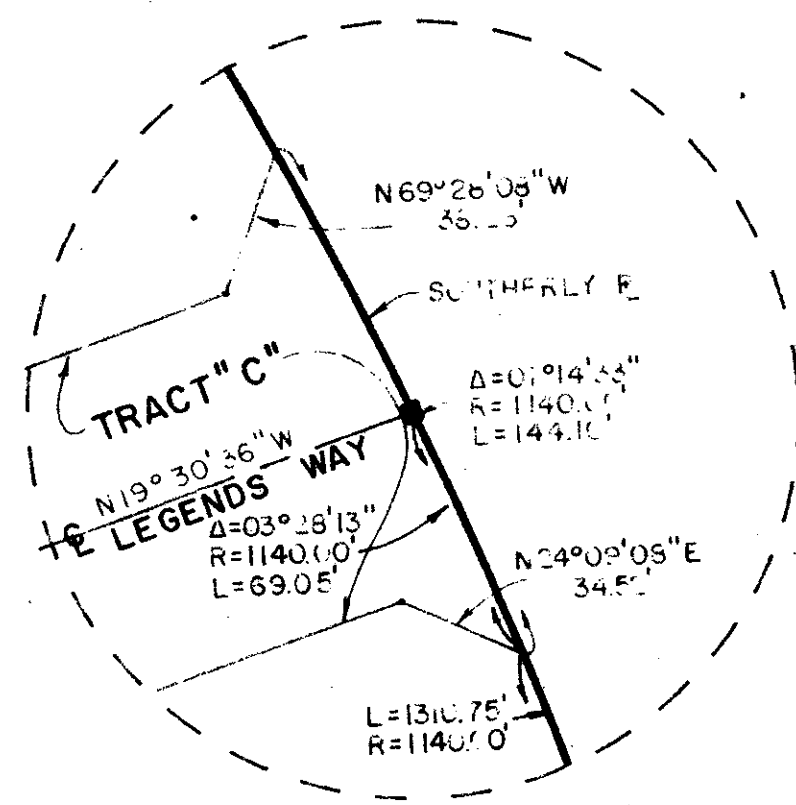
SHEET 3 OF 3



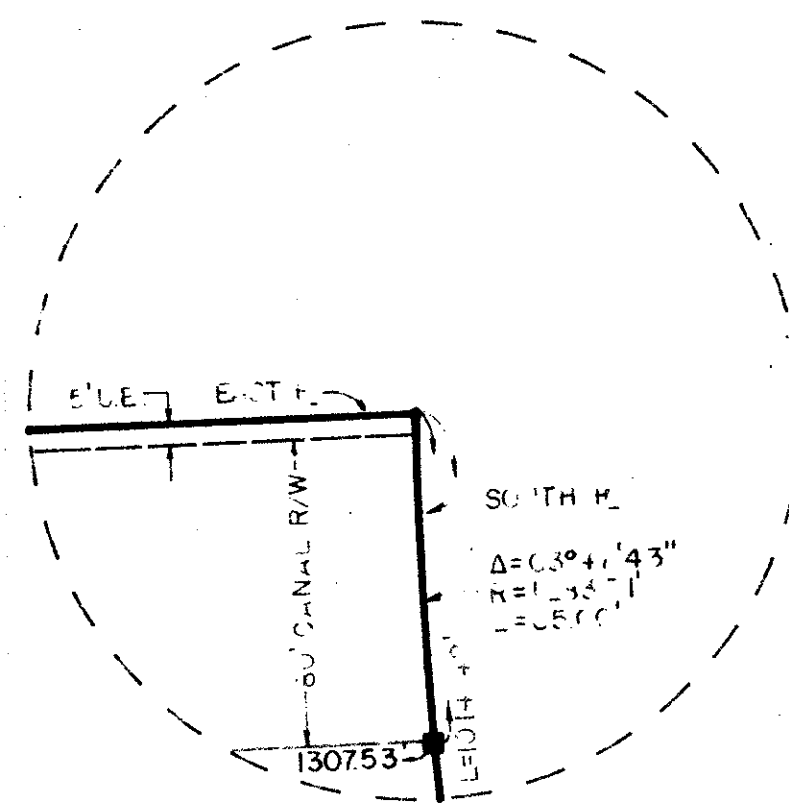
DETAIL "A"



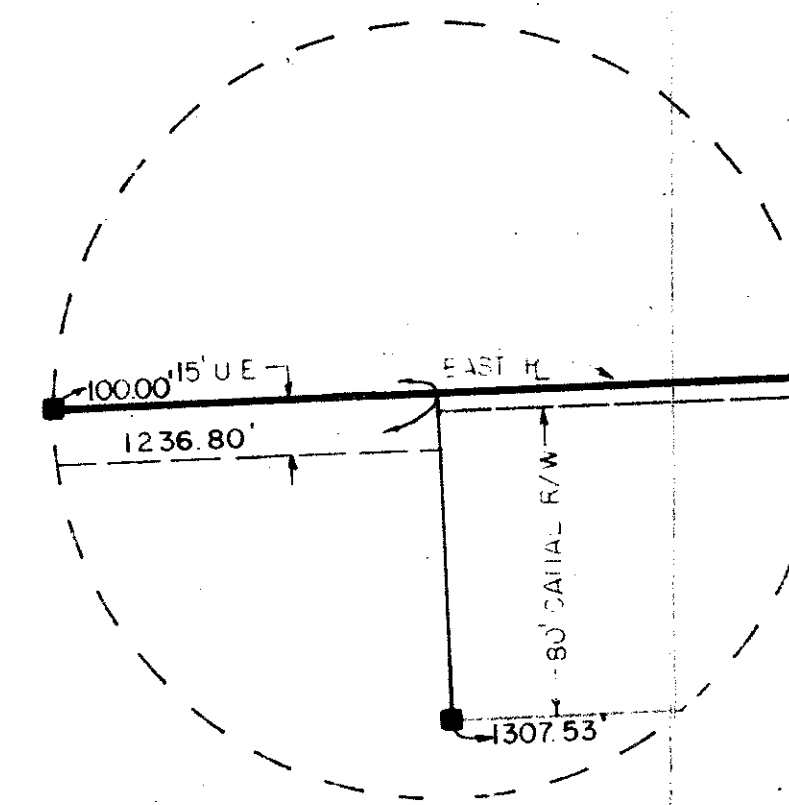
DETAIL "B"



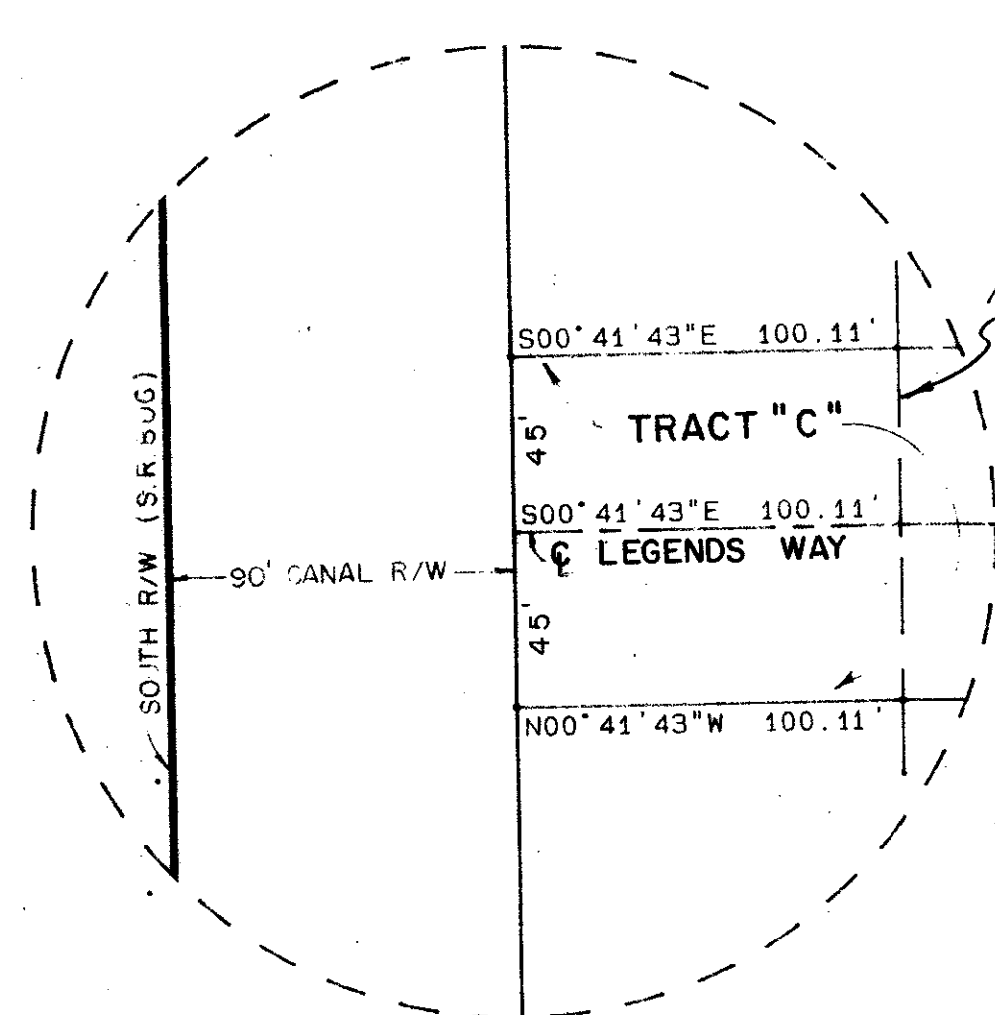
DETAIL "C"



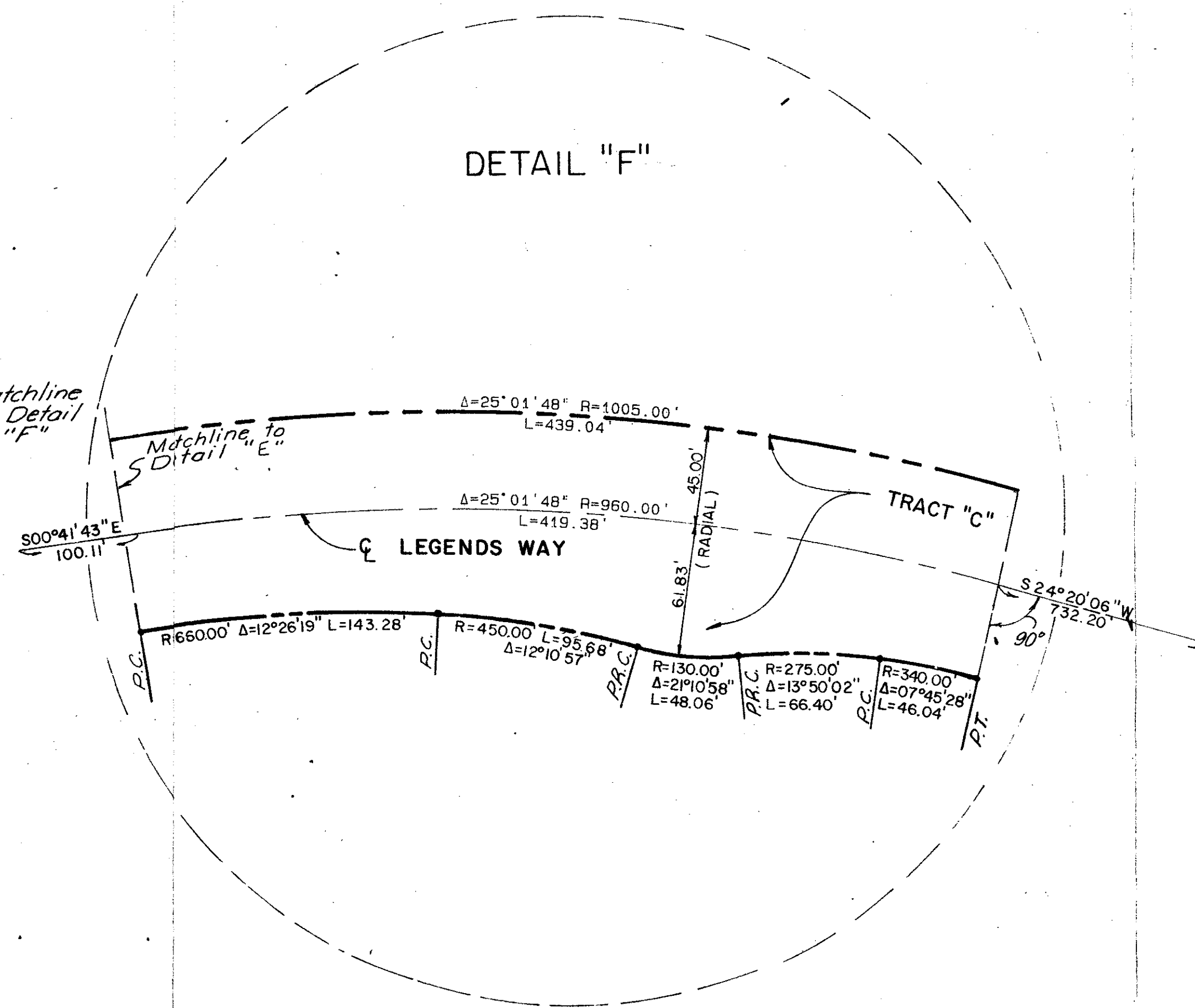
DETAIL "D"



DETAIL "E"



DETAIL "F"



0230-003

Done due
50/65

Meridian Surveying and mapping inc. WEST PALM BEACH, FLORIDA
DRAWN: M.E.H. DATE: FEB 1984
CHECKED: SCALE: 1" = 50'
DRAWING NO.: 83-P-102
GLENEAGLES PLAT ONE

DRAWING NUMBER
PLAN HOLD CORPORATION • IRVINE, CALIFORNIA
RECORDED BY NUMBER 07584

DRAWING NUMBER
PLAN HOLD CORPORATION • IRVINE, CALIFORNIA
RECORDED BY NUMBER 07584

DRAWING NUMBER
PLAN HOLD CORPORATION • IRVINE, CALIFORNIA
RECORDED BY NUMBER 07584