

50/137

137

50

PART OF BOCA POINTE P.U.D.
COSTA DEL SOL
 A PLAT OF A PORTION OF SECTION 34, TOWNSHIP 47 SOUTH, RANGE 42 EAST
 AND ALSO BEING A REPLAT OF TRACT F-1 OF BOCA POINTE NO. 4, AS RECORDED IN
 PLAT BOOK 43, PAGES 194-196 OF THE PUBLIC RECORDS OF PALM BEACH COUNTY, FLORIDA
 PALM BEACH COUNTY, FLORIDA

JOHN A. GRANT, JR., INC.

CONSULTING ENGINEERS AND LAND SURVEYORS

BOCA RATON, FLORIDA

EXISTING P.R.M. NORTHWEST CORNER OF TRACT E OF BOCA POINTE NO. 4

TRACT E

BOCA POINTE NO. 4
S00°23'05"E 1249.69

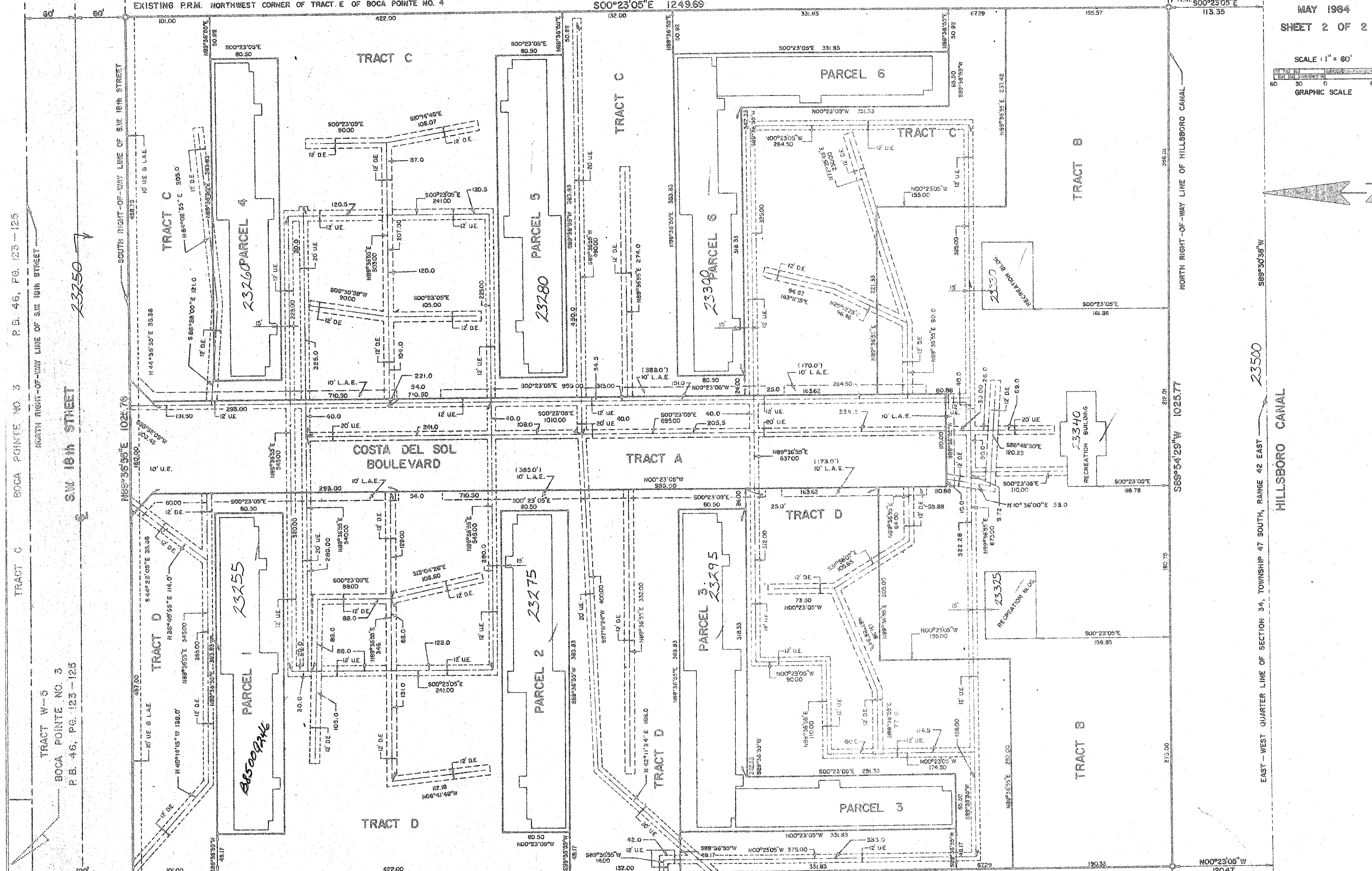
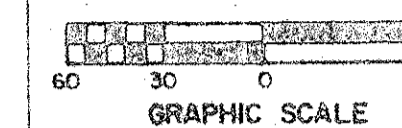
P.B. 43, PG. 194-196

EXISTING P.R.M. S00°23'05"E 113.35

MAY 1984

SHEET 2 OF 2

SCALE: 1" = 60'



- NOTES:
- Bearings shown herein are based on a bearing of N89°36'55"E along the South right-of-way line of S.W. 18th Street as shown on the record plat of Boca Raton No. 4 as recorded in Plat Book 43, Pages 194-196 of the Public Records of Palm Beach County, Florida.
 - No buildings or any kind of construction shall be placed on utility or drainage easements.
 - No structures, trees or shrubs shall be placed on drainage easements.
 - Approval of landscaping on utility easements, other than water and sewer, shall be only with the approval of all utilities occupying same.
 - P.R.M. Indicates Permanent Reference Monument.
 - U.E. Indicates Utility Easement.
 - D.E. Indicates Drainage Easement.
 - L.A.E. Indicates Limited Access Easement.

This instrument was prepared by:
 John A. Grant, Jr., John A. Grant, Jr., Inc.
 3335 North Federal Highway, Boca Raton, Florida 33431.

29/07/84

Subdivision of Costa Del Sol
 BOOK 50 PAGE 127
 FLOOD ZONE A0-1 FLOOD MAP # 2408
 GRAB # 34 ZONING RS
 CS YES ZIP CODE 33432
 PUD NAME COSTA DEL SOL

0211-020

TRACT W-5
BOCA POINTE NO. 3
P.B. 46, PG. 123-125

TRACT C
BOCA POINTE NO. 3
P.B. 46, PG. 123-125

TRACT W-5
BOCA POINTE NO. 3
P.B. 46, PG. 123-125

EXISTING P.R.M.
NORTHEAST CORNER OF
EDGEWATER POINTE ESTATES

EDGEWATER POINTE ESTATES
P.B. 44, PG. 128-130

EXISTING P.R.M.
SOUTHEAST CORNER OF
EDGEWATER POINTE ESTATES

255'

BROWARD COUNTY

EAST - WEST QUARTER LINE OF SECTION 34, TOWNSHIP 47 SOUTH, RANGE 42 EAST

HILLSBORO CANAL

S89°30'38"W 2335.00

NORTH RIGHT-OF-WAY LINE OF HILLSBORO CANAL

EXISTING P.R.M. S00°23'05"E 113.35

TRACT B

TRACT B

TRACT B

TRACT B

TRACT C

TRACT C

TRACT C

TRACT C

TRACT C

TRACT C

TRACT C

TRACT C

TRACT C

TRACT C

TRACT C

TRACT C

TRACT C

TRACT C

TRACT C

TRACT C

TRACT C

TRACT C

TRACT C

TRACT C

TRACT C

TRACT C

TRACT C

TRACT C

TRACT C

TRACT C

TRACT C

TRACT C

TRACT C

TRACT C

TRACT C

TRACT C

TRACT C

TRACT C

TRACT C

TRACT C

TRACT C

TRACT C

TRACT C

TRACT C

TRACT C

TRACT C

TRACT C

TRACT C

TRACT C

TRACT C

TRACT C

TRACT C

TRACT C

TRACT C

TRACT C

TRACT C

TRACT C

TRACT C

TRACT C

TRACT C

TRACT C

TRACT C

TRACT C

TRACT C