

50/160

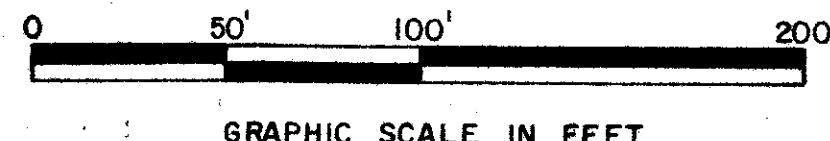
# PARKWALK - PLAT NO. 4

SECTION 14 & 15, TOWNSHIP 45 SOUTH, RANGE 42 EAST  
PALM BEACH COUNTY, FLORIDA - MAY, 1984

A PORTION OF A (P.U.D.)

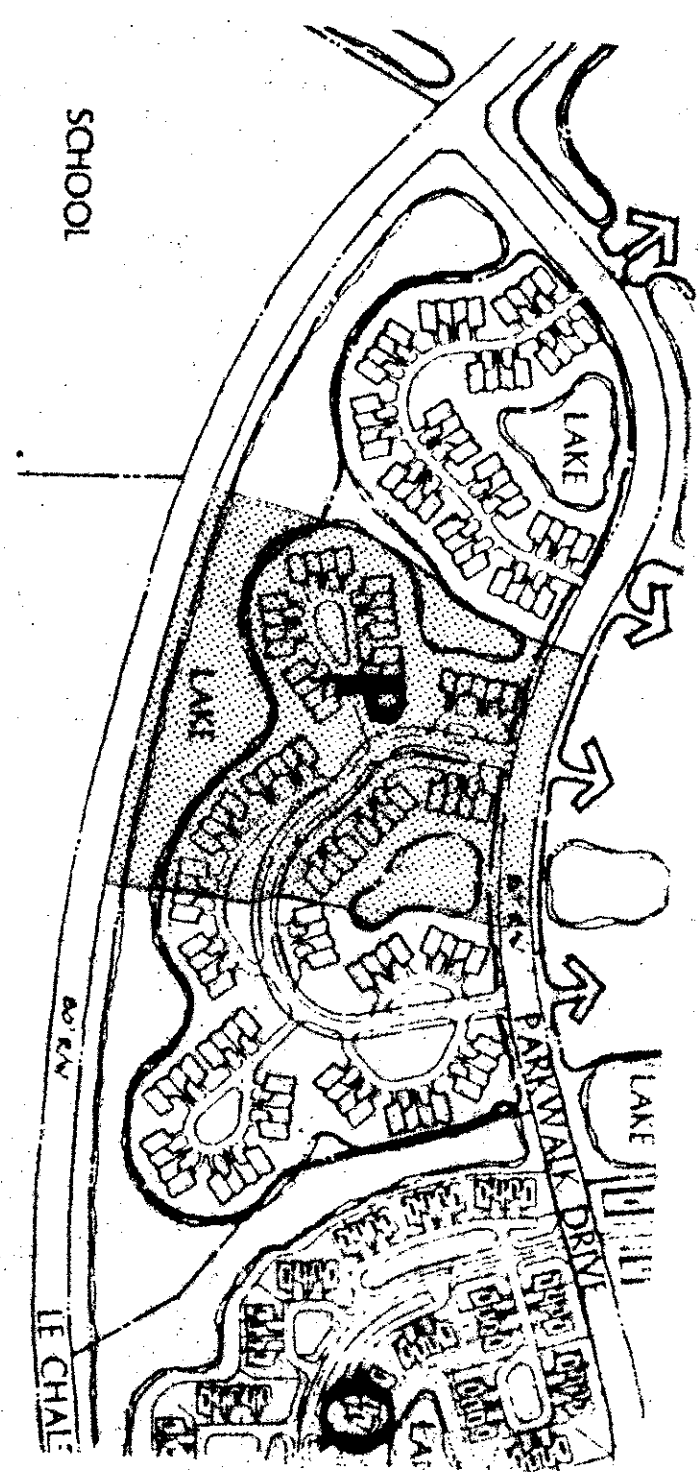
50/160

NOTE:  
SEE SHEET 4 OF 4  
FOR CURVE DATA TABLE.



SEE SHEET NO. 4

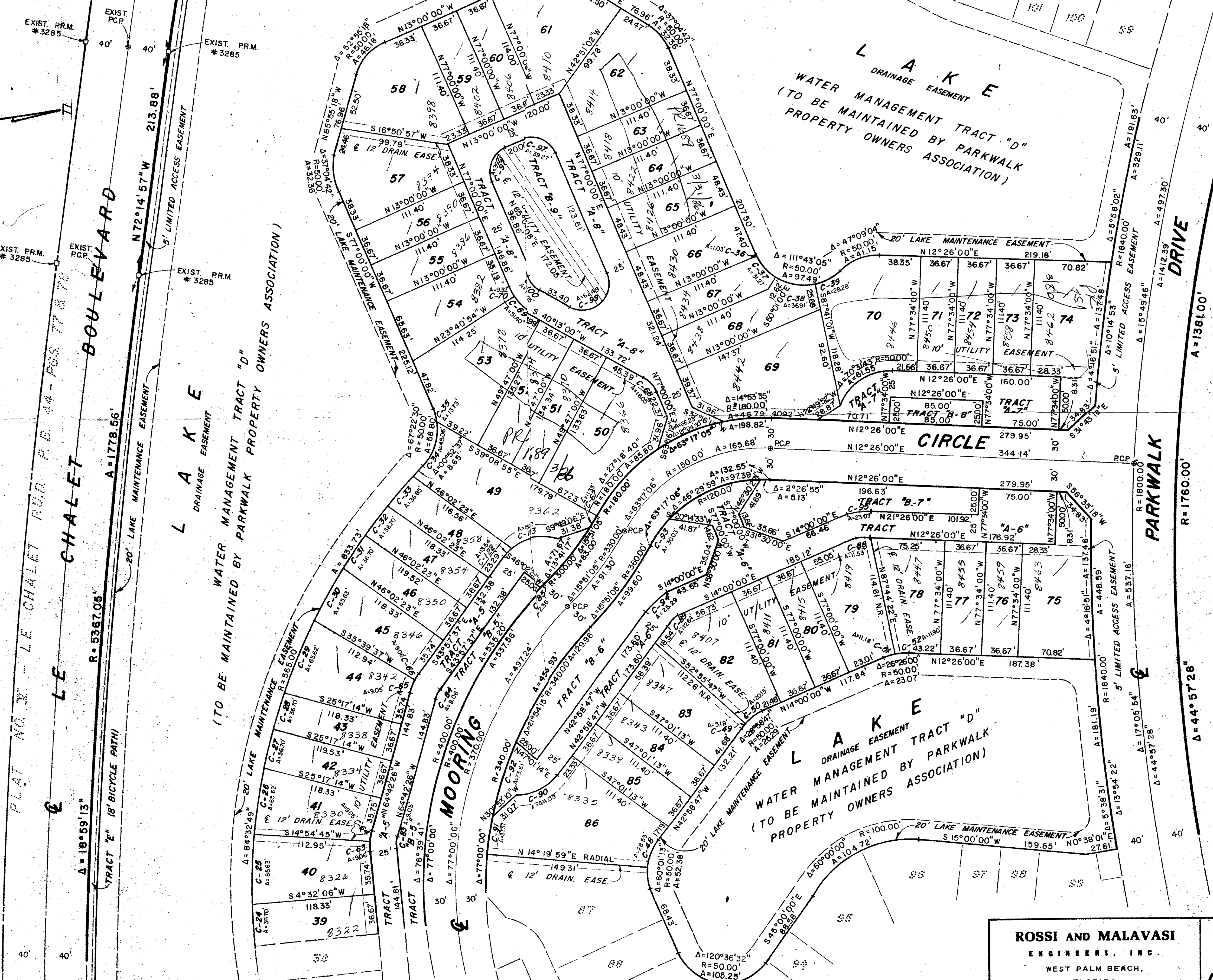
STATE OF FLORIDA }  
COUNTY OF PALM BEACH }  
This Plat was filed for record at \_\_\_\_ M.  
this \_\_\_\_ day of \_\_\_\_  
19 \_\_\_\_, and duly recorded in Plat Book No. \_\_\_\_  
on page \_\_\_\_  
JOHN B. DUNKLE, Clerk Circuit Court  
By \_\_\_\_\_, D.C.



DRAWING NUMBER

DRAWING NUMBER

DRAWING NUMBER



NKA THE MOORINGS AT ABERDEEN  
AMENDMENT RECORDED ORB 6793 P. 20

50/160  
NOT PLATTED

SUBDIVISION = Parkwalk 4  
BOOK 50 PAGE 160  
TRACT 39 B TRACT 175  
MAP 34 TRACT RS  
P.U.D. TRACT 33437  
OLD NAME PARKWALK

0270-002

<b>ROSSI AND MALAVASI</b> ENGINEERS, INC. WEST PALM BEACH, FLORIDA		<b>PARKWALK</b> PLAT NO. 4 IN 4 SHEETS SHEET NO. 4	
Date	MAY, 1984	Designed	R. ANDERSON
Drawn	C. BOSS	Scale	1" = 50'
Checked		Job No.	4226-84
Approved		File No.	3

THIS INSTRUMENT WAS PREPARED BY JOSEPH M. TUCKER IN THE OFFICES OF ROSSI AND MALAVASI ENGINEERS, INC. 1675 PALM BEACH LAKES BOULEVARD, WEST PALM BEACH, FLORIDA 33401 TELEPHONE: 737-6546