

DRAWING NUMBER  
**50/176**

DRAWING NUMBER

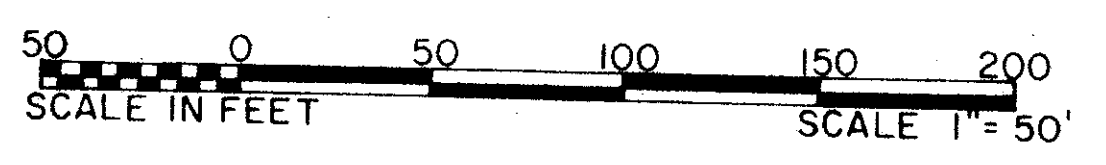
DRAWING NUMBER

DRAWING NUMBER

# BROOKSIDE - PLAT NO. 1 OF PALM BEACH POLO AND COUNTRY CLUB

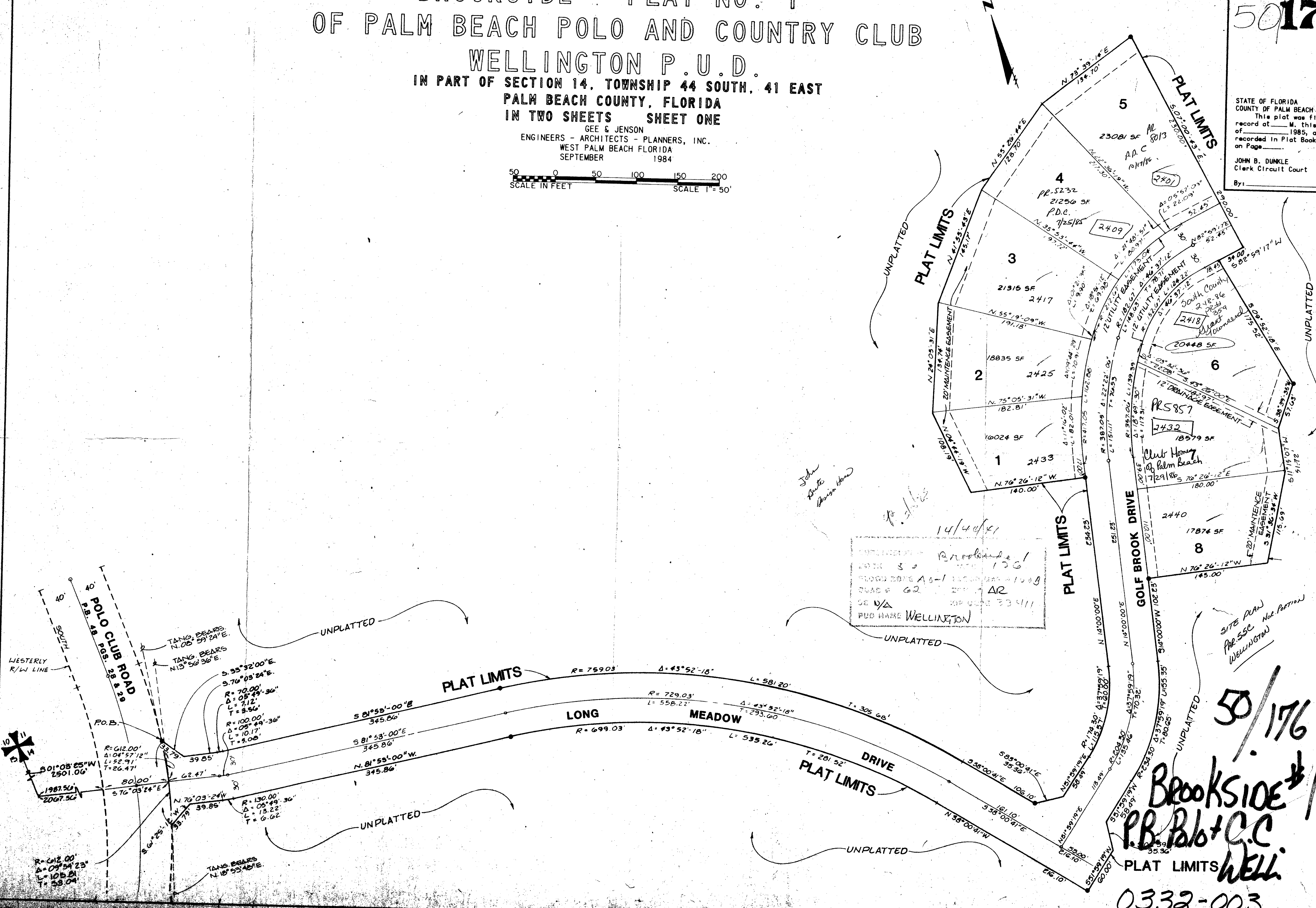
## WELLINGTON P.U.D. IN PART OF SECTION 14, TOWNSHIP 44 SOUTH, 41 EAST PALM BEACH COUNTY, FLORIDA IN TWO SHEETS SHEET ONE

GEE & JENSON  
ENGINEERS - ARCHITECTS - PLANNERS, INC.  
WEST PALM BEACH FLORIDA  
SEPTEMBER 1984



**50/176**

STATE OF FLORIDA  
COUNTY OF PALM BEACH  
This plat was filed for  
record at \_\_\_\_\_ M. this \_\_\_\_\_ day  
of \_\_\_\_\_ 1985, and duly  
recorded in Plat Book No. \_\_\_\_\_  
on Page \_\_\_\_\_  
JOHN B. DUNKLE  
Clerk Circuit Court  
By: \_\_\_\_\_ D.C.



**50/176**  
**Brookside**  
**P.B. Plat C.C.**  
**WELL**  
0332-003