

50/188

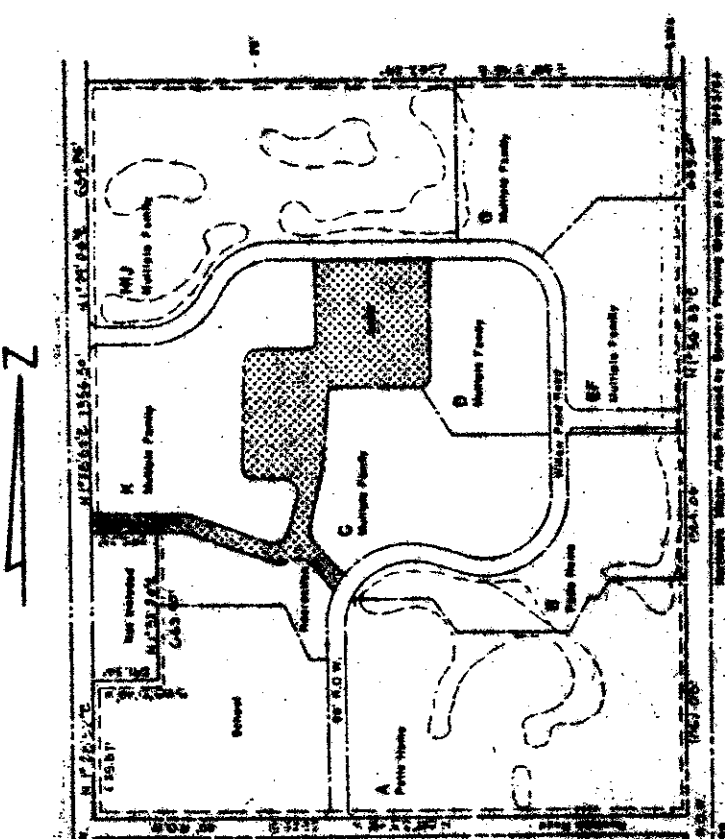
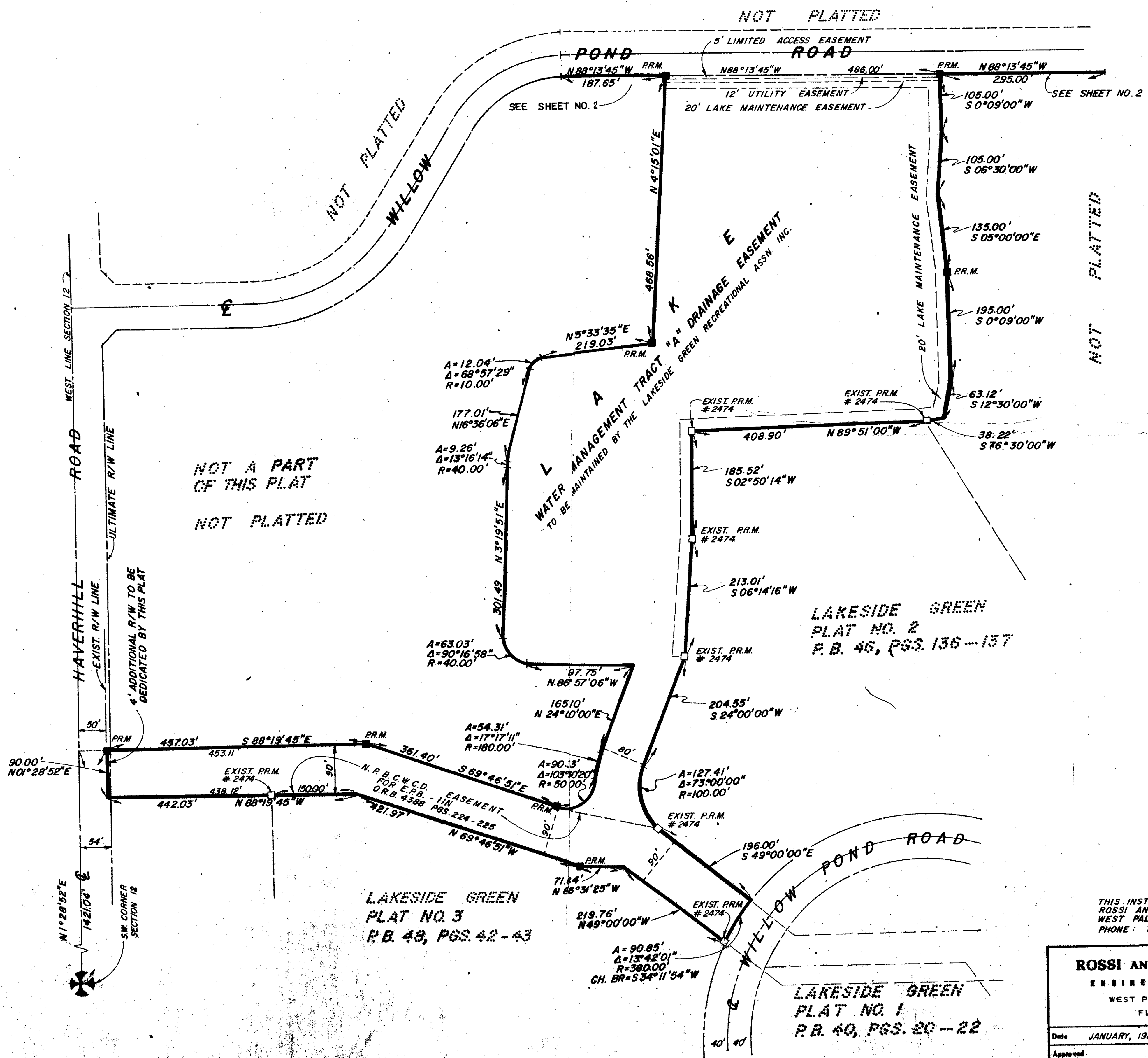
188

A PORTION OF A P.U.D. LAKESIDE GREEN-PLAT NO. 4-A SECTION 12, TOWNSHIP 43 SOUTH, RANGE 42 EAST PALM BEACH COUNTY, FLORIDA

IN 3 SHEETS SHEET NO. 3
JANUARY, 1985



STATE OF FLORIDA }
COUNTY OF PALM BEACH }
This Plat was filed for record at _____ M.
this _____ day of _____
19 _____ and duly recorded in Plat Book No. _____
on page _____
JOHN B. DUNKLE, Clerk Circuit Court
By _____, D.C.



0265-305

50/188

THIS INSTRUMENT WAS PREPARED BY JOSEPH M. TUCKER IN THE OFFICES OF
ROSSI AND MALAVASI ENGINEERS, INC., 1675 PALM BEACH LAKES BLVD.
WEST PALM BEACH, FLORIDA 33411
PHONE: 737-6546

ROSSI AND MALAVASI ENGINEERS, INC. WEST PALM BEACH, FLORIDA		A PORTION OF A P.U.D. LAKESIDE GREEN-PLAT 4-A IN 3 SHEETS SHEET NO. 3	
Date	JANUARY, 1985	Designed	R. ANDERSON
Drawn	D. FREDERICK	Job No.	330W-85
Checked		File No.	S-1904-00

DRAWING NUMBER

DRAWING NUMBER

DRAWING NUMBER

PLAN HOLD CORPORATION • IRVINE, CALIFORNIA
REORDER BY NUMBER 0754R