

50/197

A PART OF BOCA RIO, P.U.D.

REPLAT OF BOCA RIO NORTH

BEING A REPLAT OF TRACTS B, C, E AND H,
BOCA RIO NORTH AS RECORDED IN PLAT BOOK 50, PAGES 172,
THROUGH 174, INCLUSIVE, BEING IN SECTIONS 29 AND 32,
TOWNSHIP 47 SOUTH, RANGE 42 EAST, PALM BEACH
COUNTY, FLORIDA.

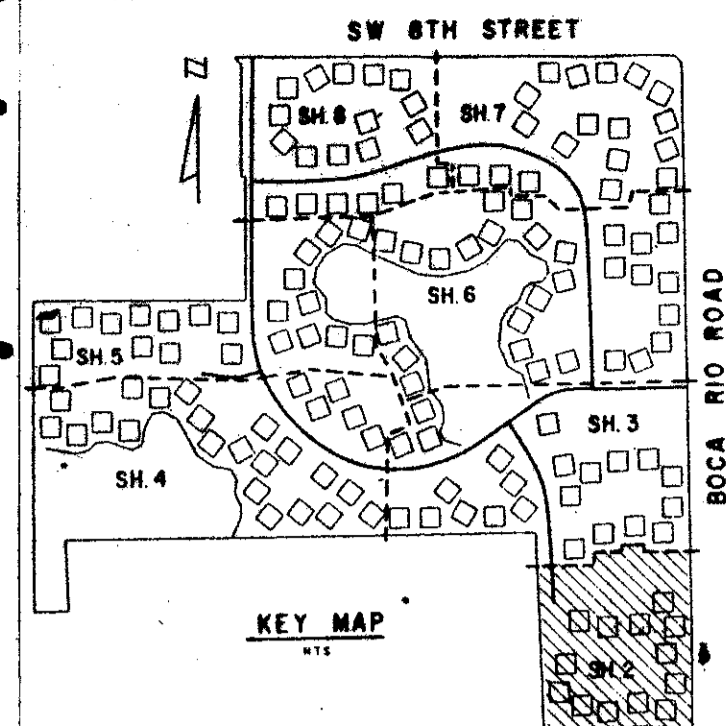
SHEET 2 OF 8

FEBRUARY, 1985

50/197

COUNTY OF PALM BEACH
STATE OF FLORIDA
This Plat was filed for record at M.
this day of
19 and duly recorded in Plat Book No.
..... on page
JOHN B. DUNKLE, Clerk, Circuit Court
By D.C.

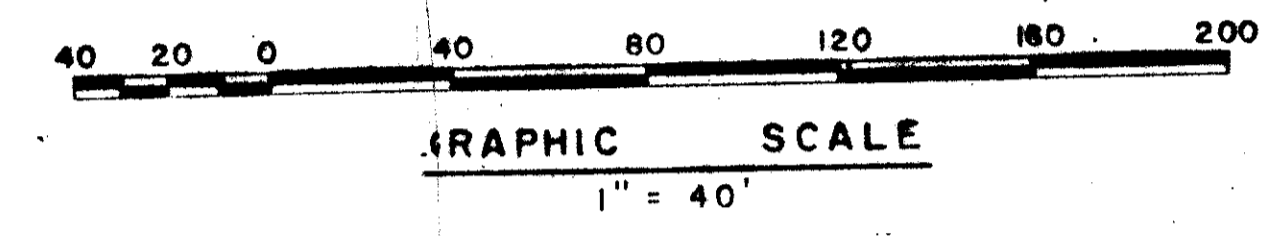
MATCH TO SHEET 3



DRAWING NUMBER

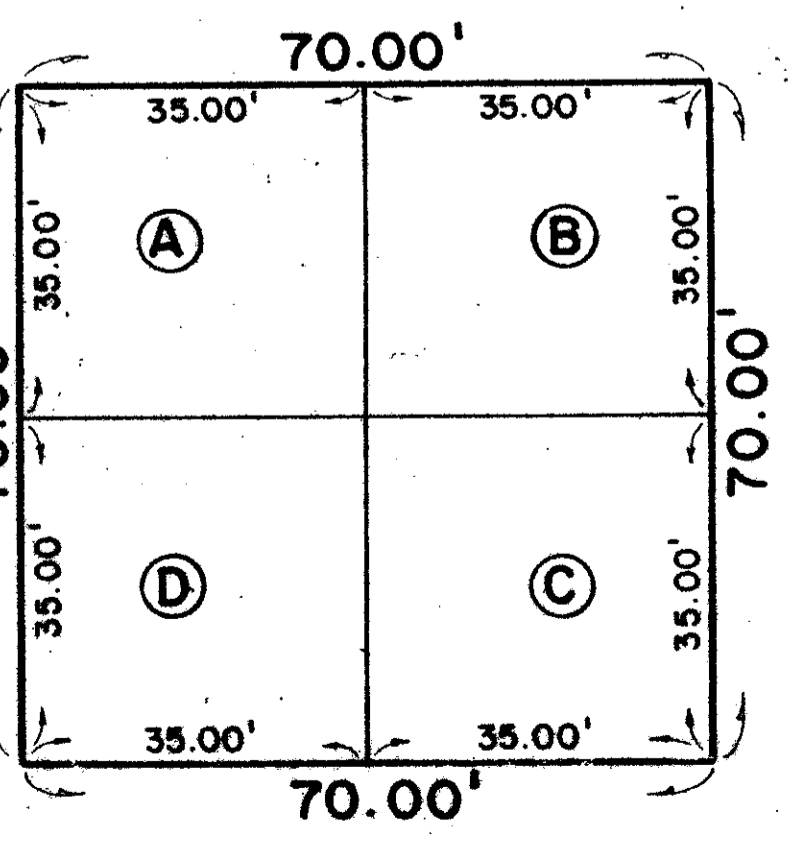
DRAWING NUMBER

DRAWING NUMBER

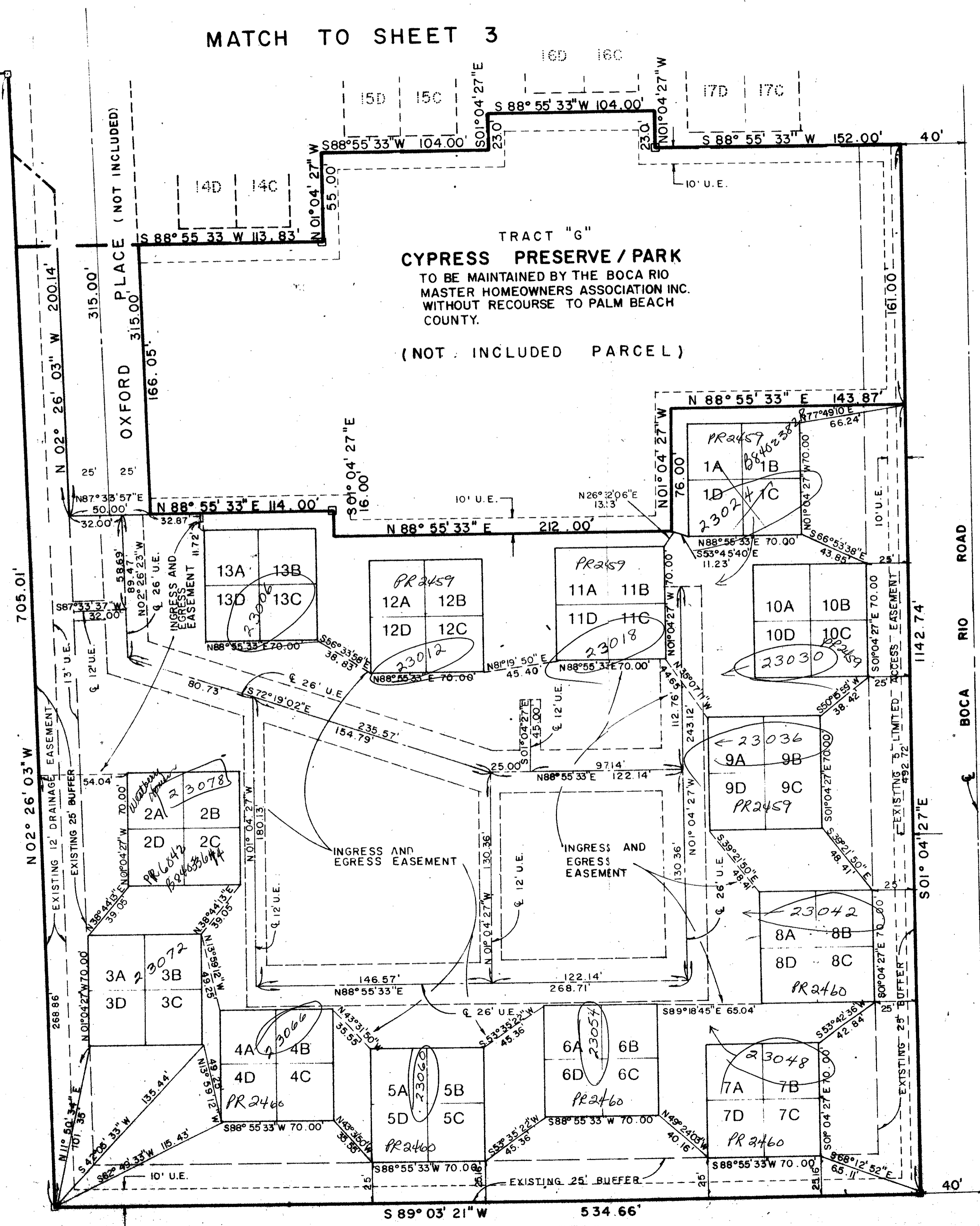


32/47/42
REPLAT OF Boca Rio North
BOOK 50 PAGE 197
PLAT BOOK A0-1
SHEET 24
ZIP CODE 33432
DUD NAME

0212-002



TYPICAL LOT DIMENSIONS
SCALE: 1" = 20'



BOCA RIO ROAD

Field Book No.	Pg.
Design	R. HAYDEN
Drawn	R. WILLIAMS
Checked	

ROBERT E. OWEN & ASSOCIATES, INC.
ENGINEERS - PLANNERS - SURVEYORS
WEST PALM BEACH
FLORIDA

REPLAT OF BOCA RIO NORTH
FOR
WESTBURY HOMES
PALM BEACH COUNTY FLORIDA

Job No.	84-1037
Scale	1" = 40'
Date	SEPT. 1984
Sheet of	8 2
File No.	BF-2399

P.B. 50 PG. 197