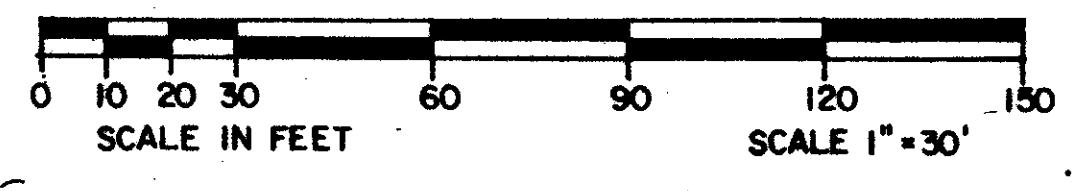


# MUIRFIELD - PLAT NO. 4 OF PALM BEACH POLO AND COUNTRY CLUB WELLINGTON - P.U.D.

IN SECTION 15, TWP. 44 S., RGE. 41 E.  
PALM BEACH COUNTY, FLORIDA.

DATE: JANUARY 1985. SHEET 2 OF 2 SHEETS



UNPLATTED

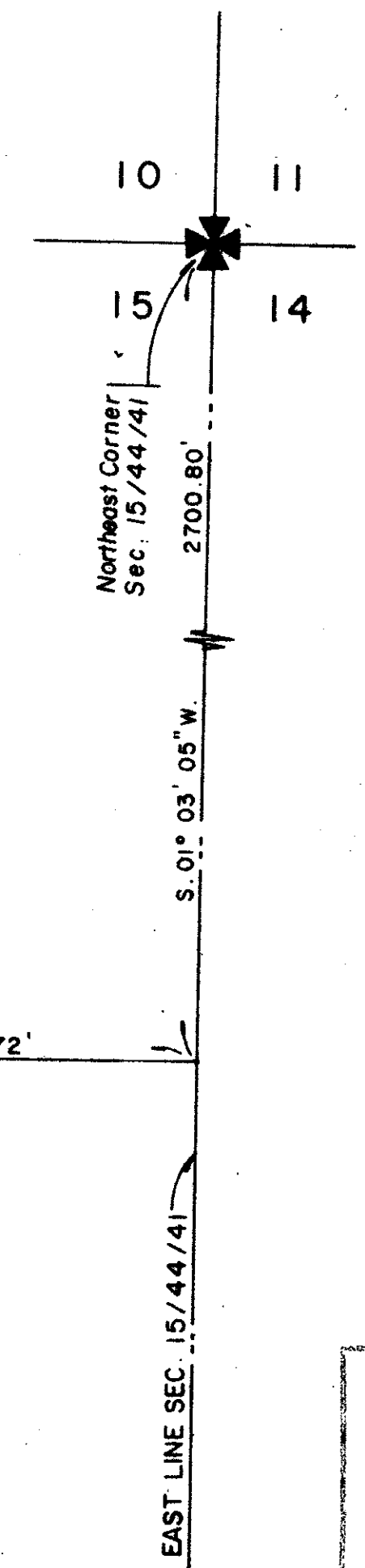
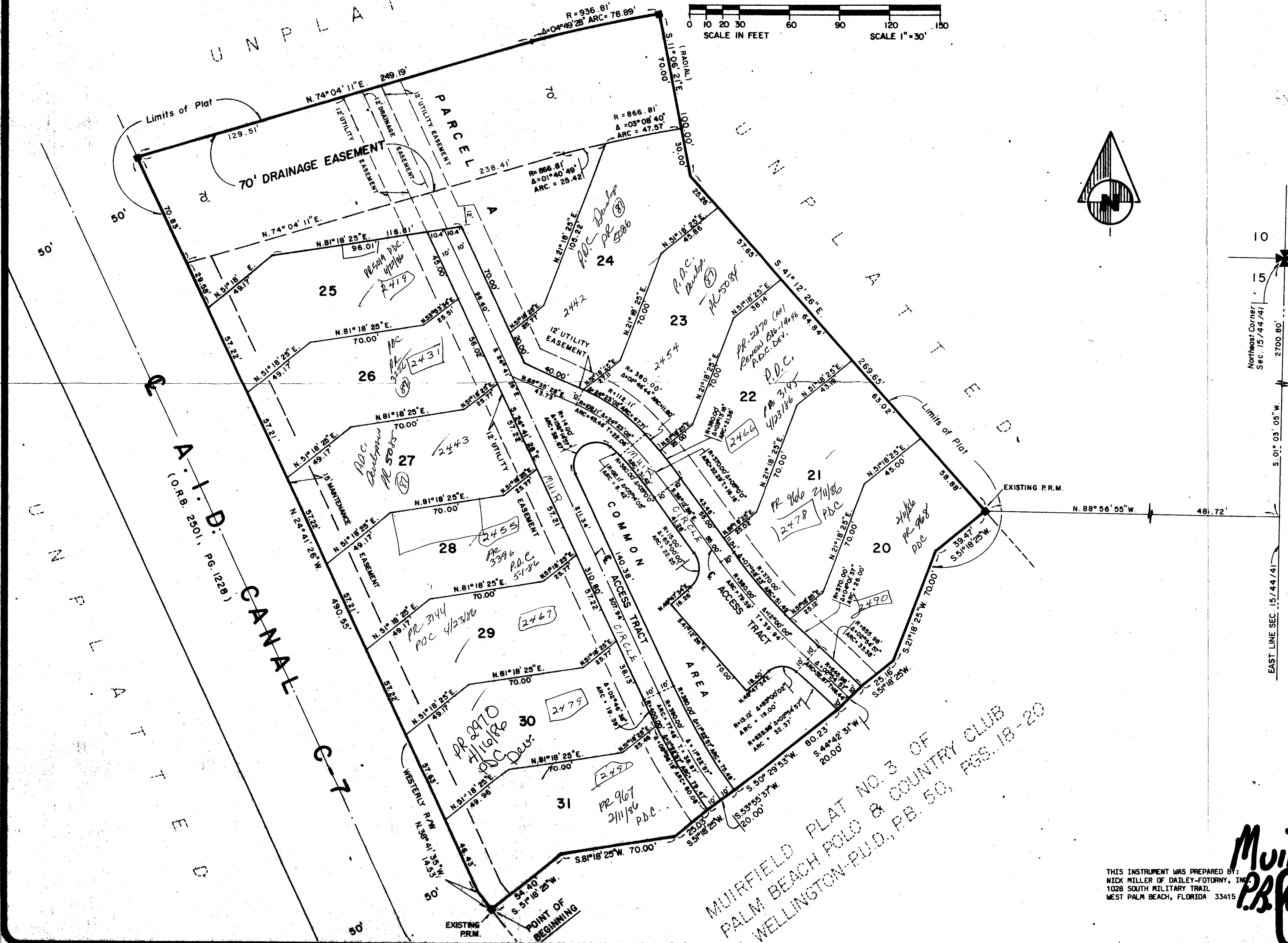
51/35

DRAWING NUMBER  
51/35

DRAWING NUMBER  
PLAN HOLD CORPORATION • IRVINE, CALIFORNIA  
REORDER BY NUMBER 07348

DRAWING NUMBER  
PLAN HOLD CORPORATION • IRVINE, CALIFORNIA  
REORDER BY NUMBER 07348

DRAWING NUMBER  
PLAN HOLD CORPORATION • IRVINE, CALIFORNIA  
REORDER BY NUMBER 07348



### NOTES

- ALL BEARINGS SHOWN HEREON ARE RELATIVE TO AN ASSUMED BEARING OF NORTH 01°03'05\"/>
- BUILDING SETBACK LINES SHALL BE AS REQUIRED BY PALM BEACH COUNTY ZONING REGULATIONS.
- NO BUILDING OR ANY KIND OF CONSTRUCTION SHALL BE PLACED ON UTILITY AND MAINTENANCE EASEMENTS.
- NO STRUCTURES, TREES OR SHRUBS SHALL BE PLACED IN THE UTILITY AND MAINTENANCE EASEMENTS.
- APPROVAL OF LANDSCAPING ON UTILITY EASEMENTS SHALL BE ONLY WITH THE APPROVAL OF ALL UTILITIES OCCUPYING SAME.
- WHERE DRAINAGE EASEMENTS AND UTILITY EASEMENTS CROSS, DRAINAGE EASEMENTS SHALL TAKE PRECEDENCE.
- DENOTES PERMANENT REFERENCE MONUMENT
- DENOTES PERMANENT CONTROL POINT
- EASEMENTS ARE FOR PUBLIC UTILITIES, WATER AND SEWER, UNLESS OTHERWISE NOTED.

0332-317

up stables

15/44/41 (6)

SUBDIVISION * Muirfield 4	
BOOK 51	PAGE 35
FLOOD ZONE B	FLOOD MAP # 1000
QUAD # 62	ZONING AR
SE N/A	ZIP CODE 33411
PUD NAME Wellington	

MUIRFIELD PLAT NO. 3 OF  
PALM BEACH POLO & COUNTRY CLUB  
WELLINGTON-P.U.D., P.B. 50, PGS. 18-20

**MUIRFIELD #4**  
51/35  
**PR. 2107**  
**Daley-Fotony, inc.**  
and surveyors, planners, engineers  
1000 So. Military Trail • West Palm Beach, Florida • 33409 Phone 306/100-5707

THIS INSTRUMENT WAS PREPARED BY:  
NICK MILLER OF DAILEY-FOTONY, INC.  
1028 SOUTH MILITARY TRAIL  
WEST PALM BEACH, FLORIDA 33415