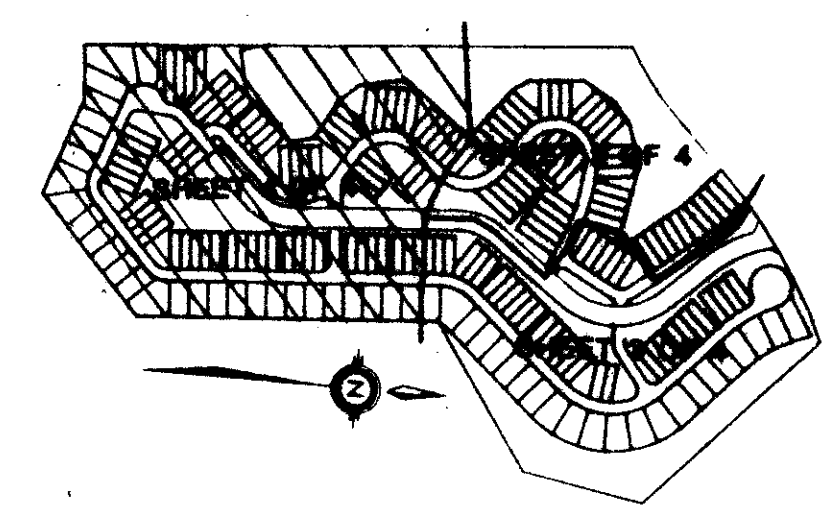
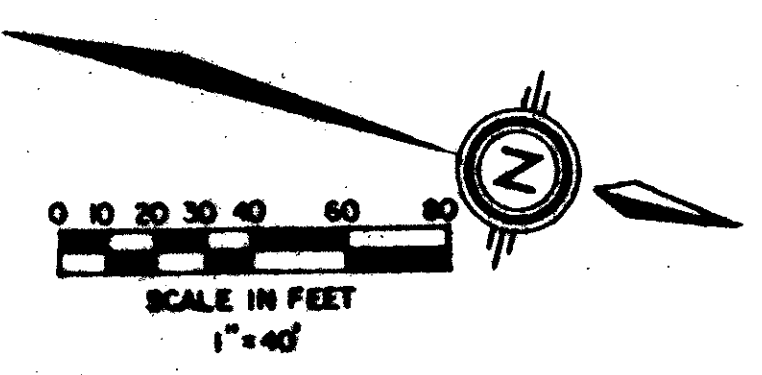


DRAWING NUMBER  
**51/59**

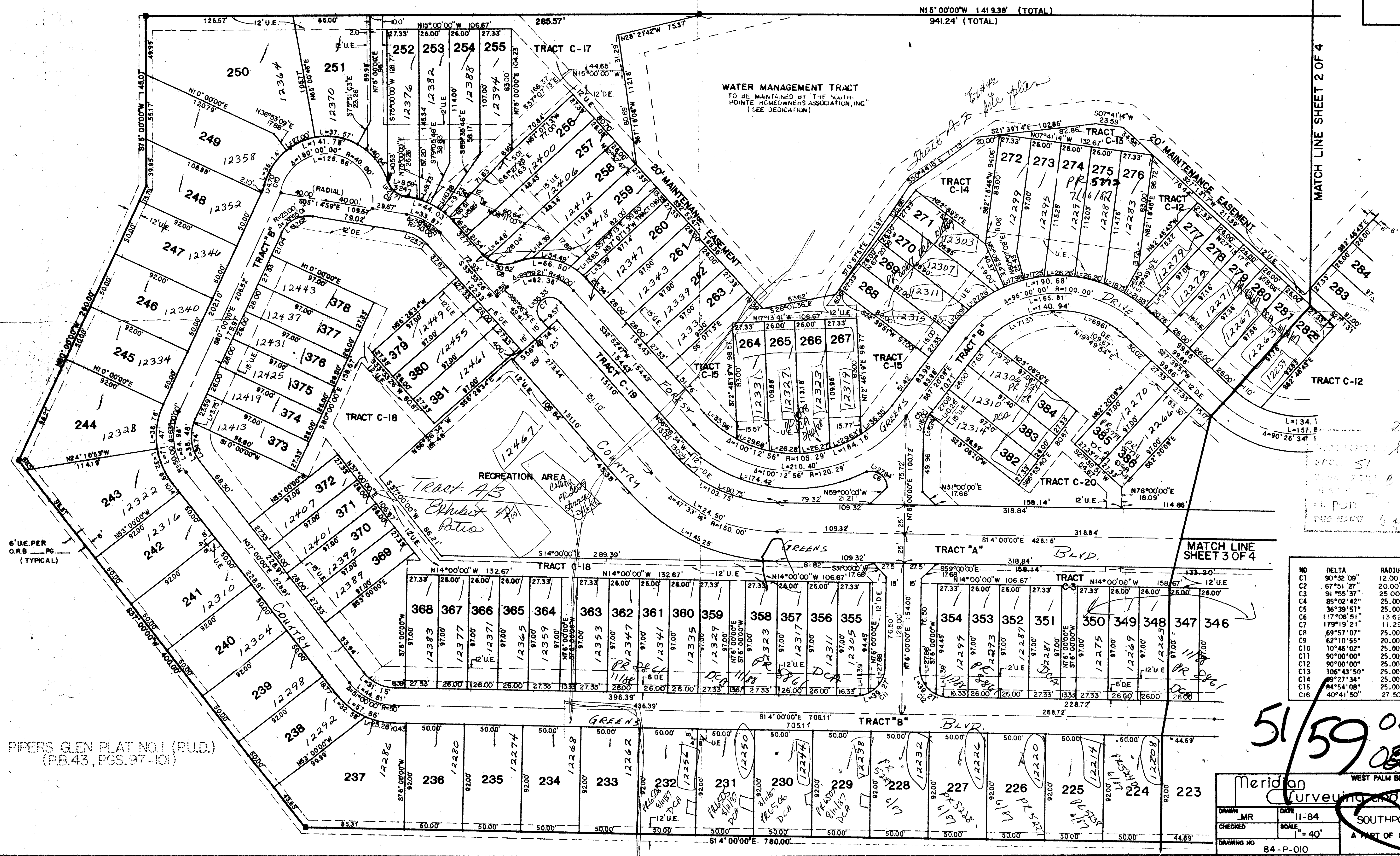
**59**

**SOUTHPOINTE PLAT 2**  
A PART OF PIPERS GLEN, A P.U.D.  
SITUATE IN SECTION 2, TOWNSHIP 46 SOUTH, RANGE 42 EAST,  
PALM BEACH COUNTY, FLORIDA,  
BEING A REPLAT OF A PORTION OF TRACT "A2" OF PIPERS GLEN PLAT NO. 1 (PB.43 P.97-101)  
FEBRUARY, 1985  
SHEET 4 OF 4



STATE OF FLORIDA  
COUNTY OF PALM BEACH  
THIS PLAT WAS FILED FOR  
RECORD AT \_\_\_\_\_  
THIS \_\_\_\_\_ DAY OF \_\_\_\_\_  
AD, 1984 AND DULY RECORDED  
IN PLAT BOOK \_\_\_\_\_ ON PAGES  
\_\_\_\_\_ AND \_\_\_\_\_  
JOHN B. DUNKLE, CLERK  
BY: \_\_\_\_\_, D.C.

PIPERS GLEN PLAT NO.1 (P.U.D.)  
(PB.43, PGS.97-101)



NO	DELTA	RADIUS	LENGTH
C1	90°32'09"	12.00'	18.96'
C2	67°51'27"	20.00'	25.69'
C3	91°25'37"	25.00'	40.11'
C4	85°02'42"	25.00'	37.11'
C5	36°39'51"	25.00'	16.00'
C6	117°06'51"	13.62'	27.84'
C7	179°19'21"	11.29'	35.33'
C8	69°57'07"	25.00'	30.52'
C9	62°10'55"	20.00'	21.71'
C10	10°46'02"	25.00'	4.70'
C11	90°00'00"	25.00'	39.27'
C12	90°00'00"	25.00'	39.27'
C13	106°43'50"	25.00'	46.57'
C14	84°27'34"	25.00'	43.40'
C15	84°54'08"	25.00'	37.05'
C16	40°41'50"	27.50'	19.53'

**51/59** 0298-002  
0298-002

Meridian  
Surveying and mapping inc.  
WEST PALM BEACH, FLORIDA

DRAWN: JMR DATE: 11-84  
CHECKED: SCALE: 1"=40'  
DRAWING NO: 84-P-010

**SOUTHPOINTE PLAT 2**  
A PART OF PIPERS GLEN, A P.U.D.

DRAWING NUMBER

DRAWING NUMBER

DRAWING NUMBER

PLAN HOLD CORPORATION • IRVINE, CALIFORNIA  
REORDER BY NUMBER 07548