

DRAWING NUMBER
51/100

PARCEL E-4 AT BOCA WEST

A PART OF BOCA WEST, PLANNED UNIT DEVELOPMENT

SURVEYOR'S NOTES:

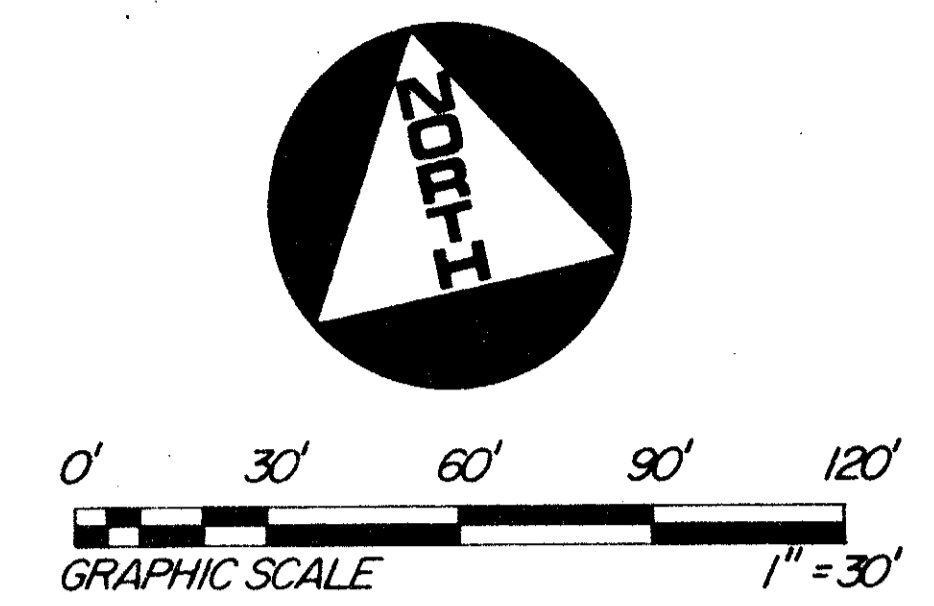
- NO BUILDINGS OR ANY KIND OF CONSTRUCTION SHALL BE PLACED ON UTILITY OR DRAINAGE EASEMENTS.
- NO STRUCTURES, TREES OR SHRUBS SHALL BE PLACED ON DRAINAGE EASEMENTS.
- APPROVAL OF LANDSCAPING ON UTILITY EASEMENTS OTHER THAN WATER OR SEWER SHALL BE ONLY WITH THE APPROVAL OF ALL UTILITIES OCCUPYING SAME.
- BUILDING SET-BACK LINES SHALL BE AS REQUIRED BY CURRENT PALM BEACH COUNTY ZONING REGULATIONS.
- ALL BEARINGS SHOWN HEREON ARE BASED ON AN ASSUMED MERIDIAN USED THROUGHOUT BOCA WEST. ALL OTHER BEARINGS ARE RELATIVE THERETO.
- THIS INSTRUMENT WAS PREPARED BY WM. R. VAN CAMPEN, IN THE OFFICES OF BENCHMARK LAND SURVEYING AND MAPPING, INC., 2833 EXCHANGE COURT, WEST PALM BEACH, FLORIDA 33409.

THIS INSTRUMENT WAS PREPARED BY WM. R. VAN CAMPEN, IN THE OFFICES OF BENCHMARK LAND SURVEYING AND MAPPING, INC., 2833 EXCHANGE COURT, WEST PALM BEACH, FLORIDA 33409. TELEPHONE: (305) 689-2111

STATE OF FLORIDA) S.S.
COUNTY OF PALM BEACH)

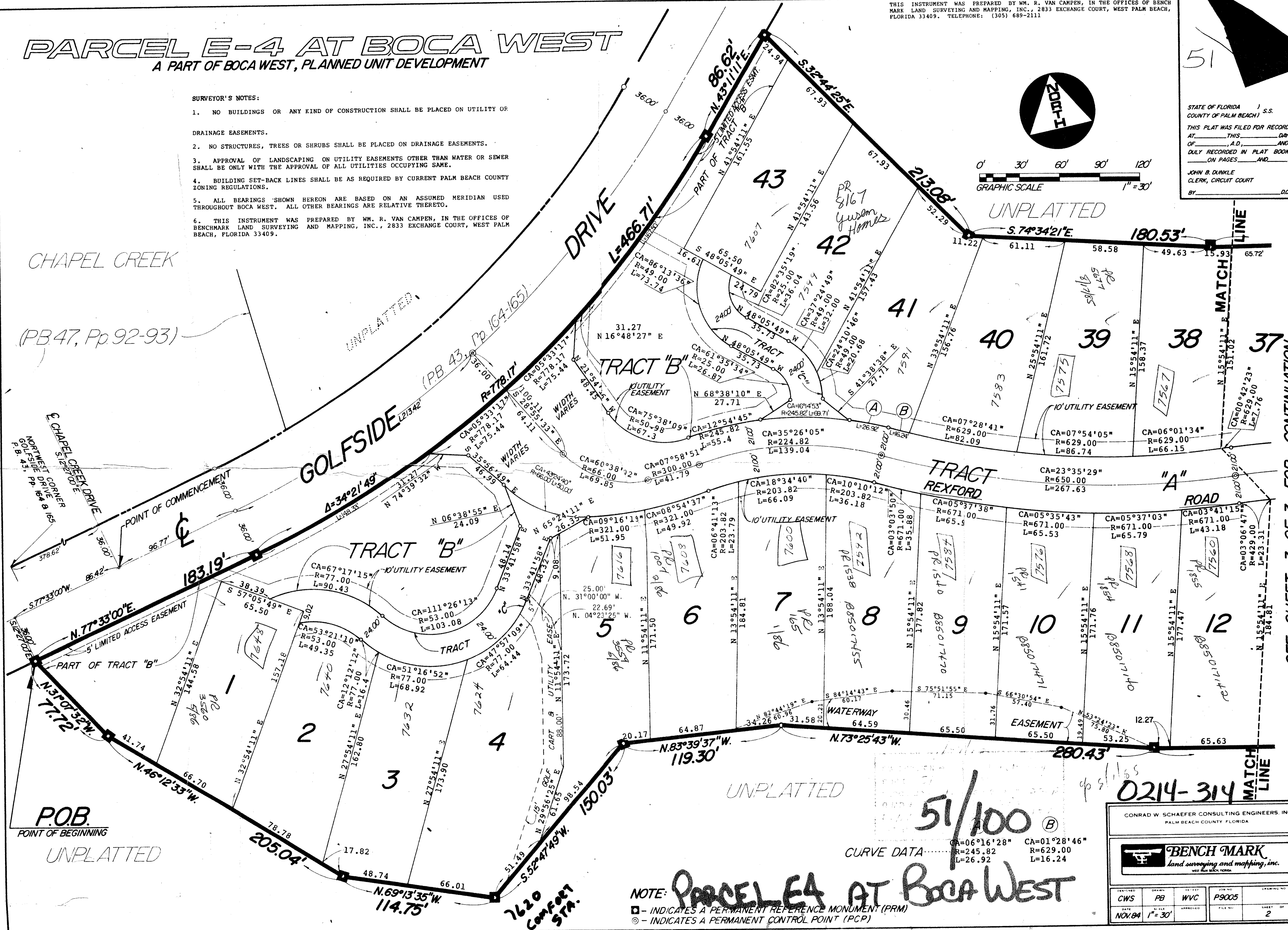
THIS PLAT WAS FILED FOR RECORD AT THIS DAY OF _____, A.D., AND DULY RECORDED IN PLAT BOOK _____ ON PAGES _____ AND _____.

JOHN B. DUNKLE
CLERK, CIRCUIT COURT
BY _____ DC



CHAPEL CREEK

(PB 47, Pp 92-93)



SEE SHEET 3 OF 3 FOR CONTINUATION

51/100 (B)

CURVE DATA

CA=06°16'28"	CA=01°28'46"
R=245.82	R=629.00
L=26.92	L=16.24

NOTE: **PARCELE 4 AT BOCA WEST**

□ - INDICATES A PERMANENT REFERENCE MONUMENT (PRM)

○ - INDICATES A PERMANENT CONTROL POINT (PCP)

CONRAD W. SCHAEFER CONSULTING ENGINEERS, INC.
PALM BEACH COUNTY, FLORIDA

BENCHMARK
land surveying and mapping, inc.
WEST PALM BEACH, FLORIDA

DESIGNED CWS	DRAWN PB	CHECKED WVC	TITLE NO. P9005	DRAWING NO.
DATE NOV. 84	SCALE 1" = 30'	APPROVED	FILE NO.	SHEET OF 2 3

DRAWING NUMBER

DRAWING NUMBER

DRAWING NUMBER

PLAN HOLD CORPORATION • IRVINE, CALIFORNIA
RECORDED BY NUMBER 07348