

DRAWING NUMBER  
**51/133**

DRAWING NUMBER

DRAWING NUMBER

DRAWING NUMBER

# TRENDS AT BOCA RATON UNIT I

(A REPLAT OF PART OF PALM BEACH FARMS COMPANY PLAT NO. 3)  
PART OF CYPRESS POINT A P.U.D.

SITUATE IN SECTION 32, TOWNSHIP 47 SOUTH, RANGE 42 EAST  
PALM BEACH COUNTY, FLORIDA  
MAY, 1985 SHEET 3 OF 4

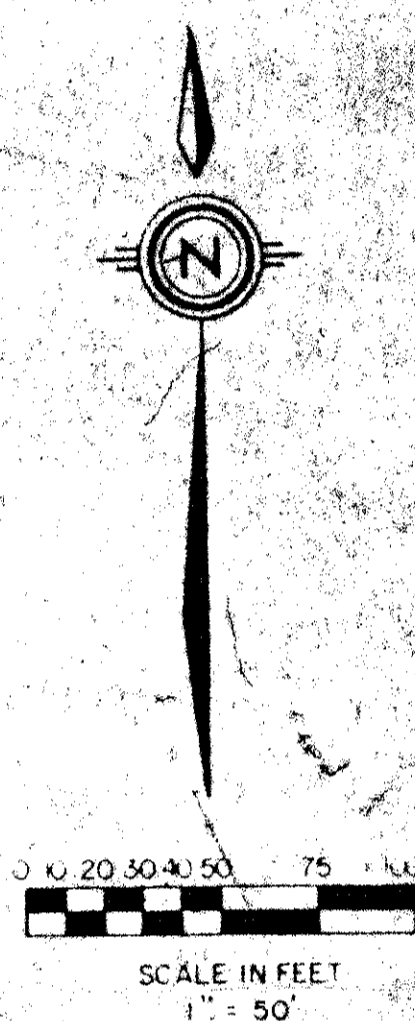
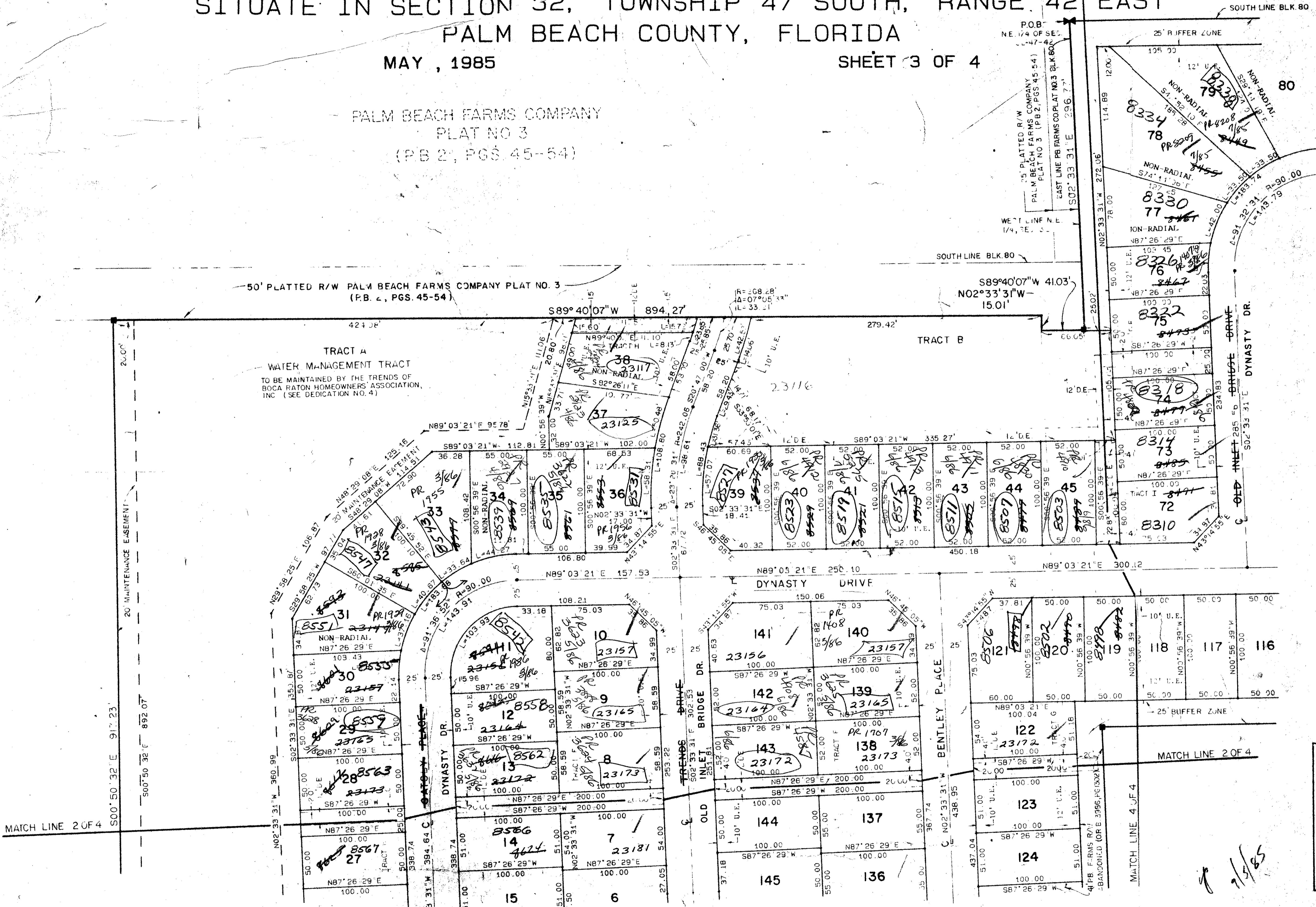
PALM BEACH FARMS COMPANY  
PLAT NO. 3  
(PB 2, PGS. 45-54)

**133**

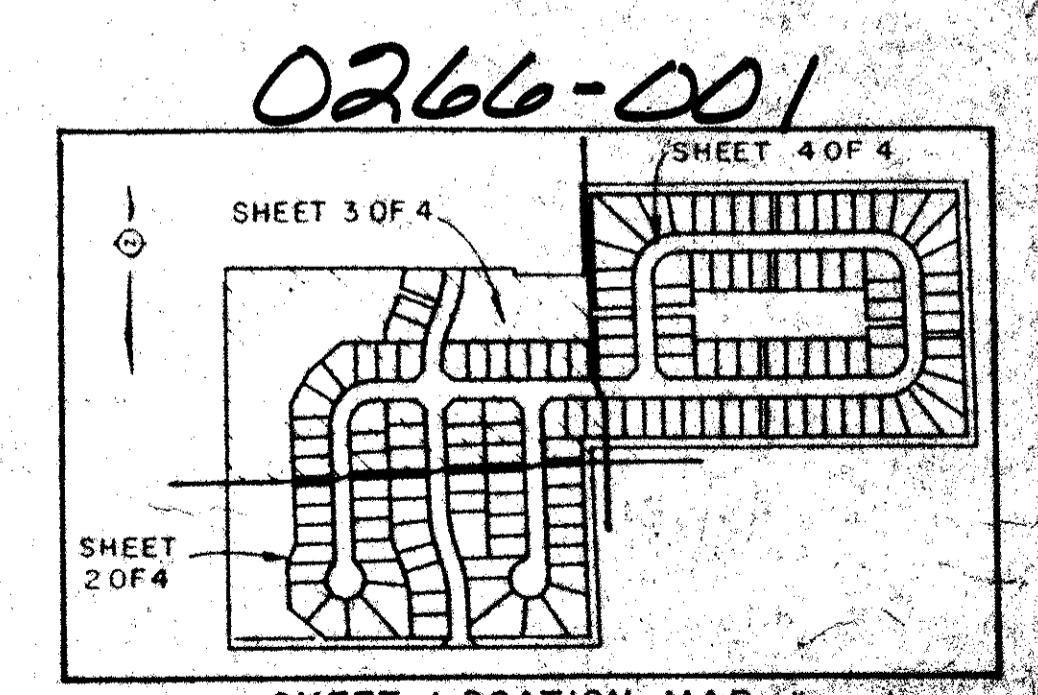
STATE OF FLORIDA  
COUNTY OF PALM BEACH

THIS PLAT WAS FILED FOR  
RECORD AT \_\_\_\_\_  
THIS \_\_\_\_\_ DAY OF \_\_\_\_\_  
AD, 1985 AND DULY RECORDED  
IN PLAT BOOK \_\_\_\_\_ ON PAGES  
AND \_\_\_\_\_

JOHN B. DUNKLE, CLERK  
BY \_\_\_\_\_, D.C.



NO	DELTA	RADIUS	LENGTH
02	70° 31' 45"	25.00	30.77
03	48° 11' 23"	25.00	21.03
03	48° 11' 23"	25.00	21.03



SUBDIVISION # Trends at Boca Raton Unit I  
BOOK 51 PAGE 133  
FLOOD ZONE PD FLOOD MAP # 2443  
QUAD # 54 ZONING RS  
SE PUD ZIP CODE 33433  
PUD NAME Cypress Point

**51/133** *Per 7/5/85 collect*

ROAD NAME CHANGES R-86-(86-289)  
WEST PALM BEACH, FLORIDA

Meridian Surveying and Mapping, Inc.

DRAWN BY: MHC/MEH	DATE: JAN 1985
CHECKED BY:	SCALE: 1" = 50'
DRAWING NO: 84-P-090	

TRENDS AT BOCA RATON UNIT I  
PART OF CYPRESS POINT A P.U.D.