

DRAWING NUMBER
51/134

TRENDS AT BOCA RATON UNIT I

(A REPLAT OF PART OF PALM BEACH FARMS COMPANY PLAT NO. 3)
PART OF CYPRESS POINT A P.U.D.

SITUATE IN SECTION 32, TOWNSHIP 47 SOUTH, RANGE 42 EAST
PALM BEACH COUNTY, FLORIDA
MAY, 1985 SHEET 4 OF 4

134

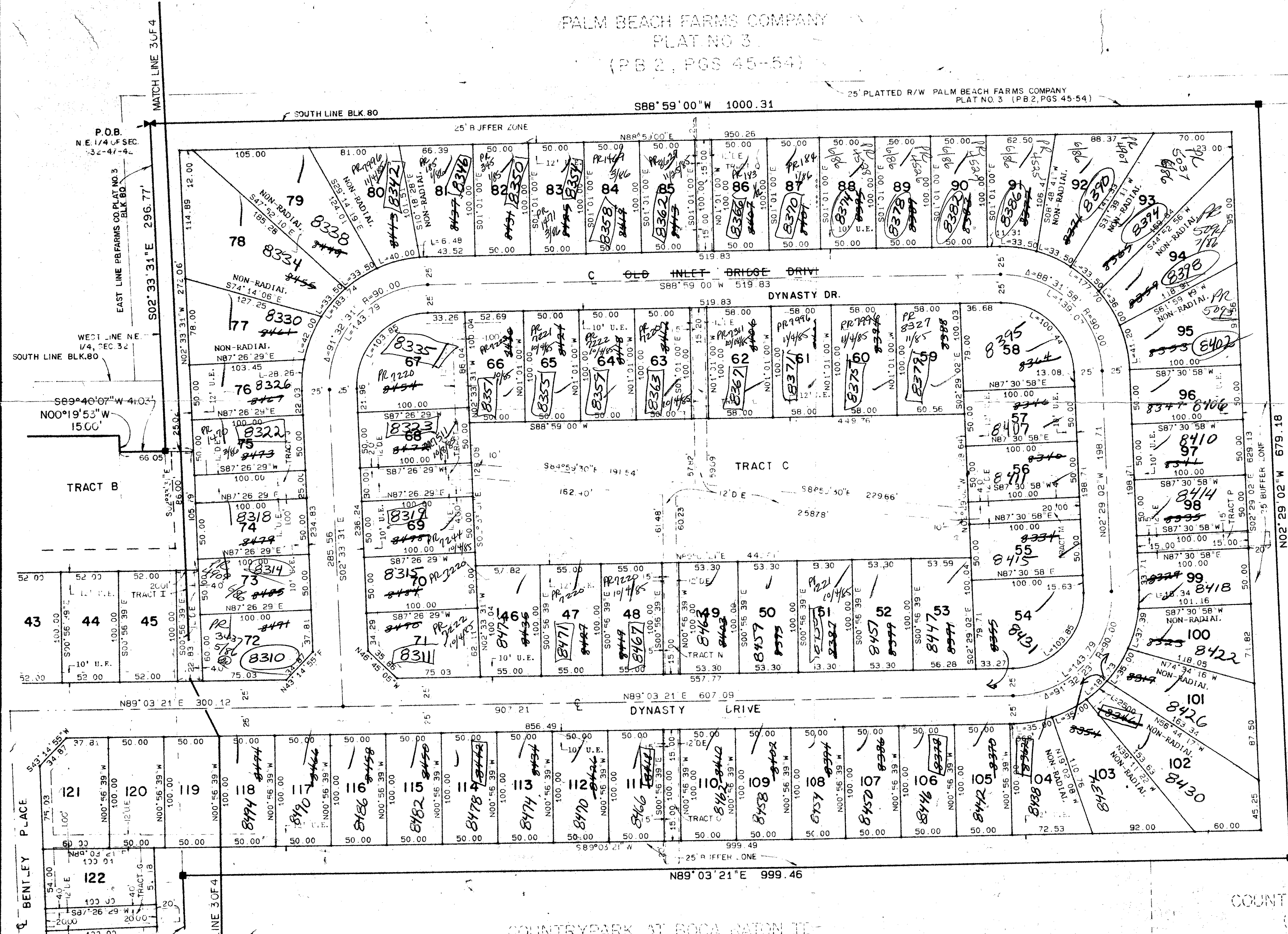
STATE OF FLORIDA
COUNTY OF PALM BEACH
THIS PLAT WAS FILED FOR
RECORD AT _____ DAY OF _____
AD. 1985 AND DULY RECORDED
IN PLAT BOOK _____ ON PAGES
_____ AND _____
BY: JOHN B. DUNKLE, CLERK D.C.

PALM BEACH FARMS COMPANY
PLAT NO. 3
(PB 2, PGS 45-54)

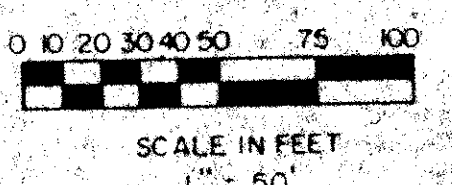
DRAWING NUMBER

DRAWING NUMBER

DRAWING NUMBER



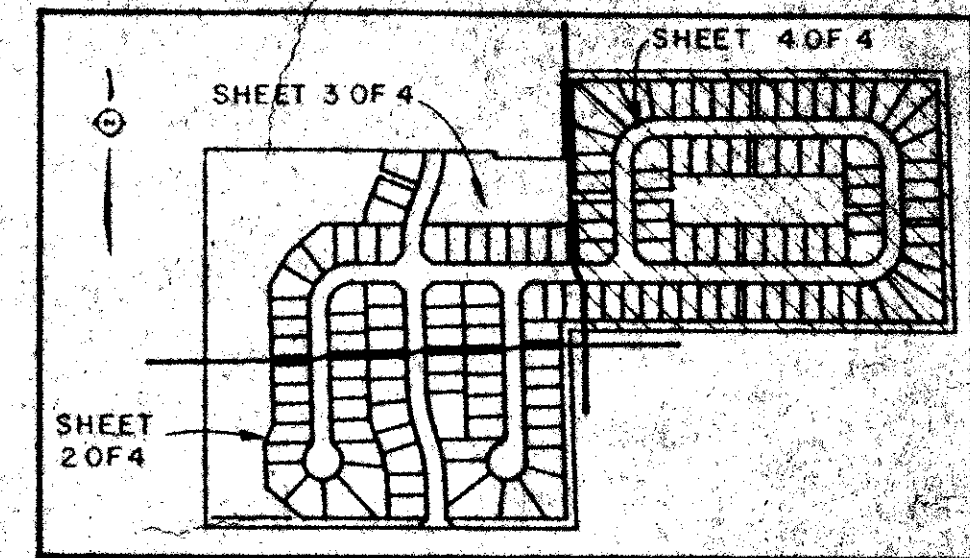
SUBDIVISION *Trends @ Boca*
BOOK *51* PAGE *134*
FLOOD ZONE *AD-1* FLOOD MAP *2406*
QUAD *54* ZONING *R5*
SE PUD ZIP CODE *33433*
PUD NAME *Cypress Point*



NO.	DELTA	RADIUS	LENGTH
C1	70° 31' 45"	25.00	30.77
C2	48° 11' 23"	25.00	21.03
C3	48° 11' 23"	25.00	21.03

UNPLATTED

0266-001



51/134

COUNTRYPARK AT BOCA RATON III
(PB 48, PGS 135-136)
ROAD CHANGES R-86 (86-289)

DRAWN		DATE	
MHC/MEH	JAN 1985		
CHECKED		SCALE	
		1" = 50'	
DRAWING NO.		84-P-09C	
WEST PALM BEACH, FLORIDA			
TRENDS AT BOCA RATON UNIT I PART OF CYPRESS POINT A PUD			