

DRAWING NUMBER  
**51/137**

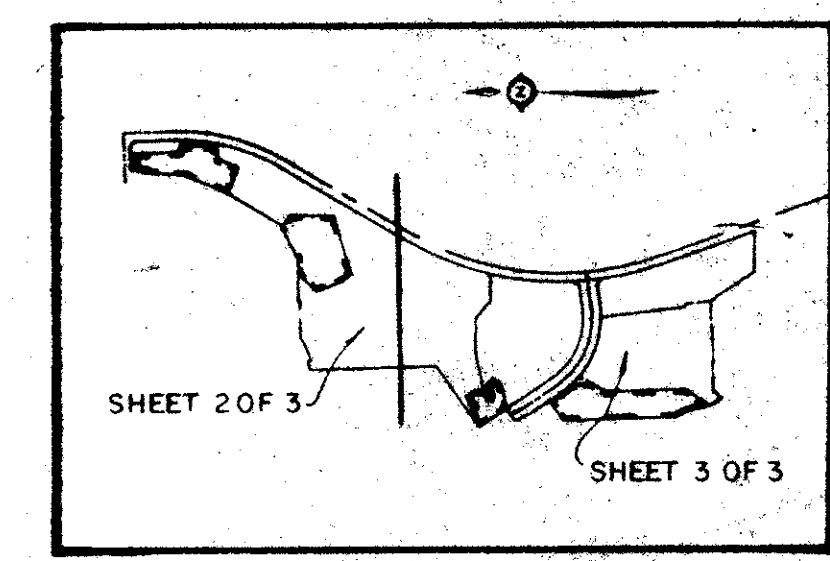
# GLENEAGLES PLAT FOUR

## GOLF AND TENNIS CLUB, PART OF COVENTRY, A P.U.D.

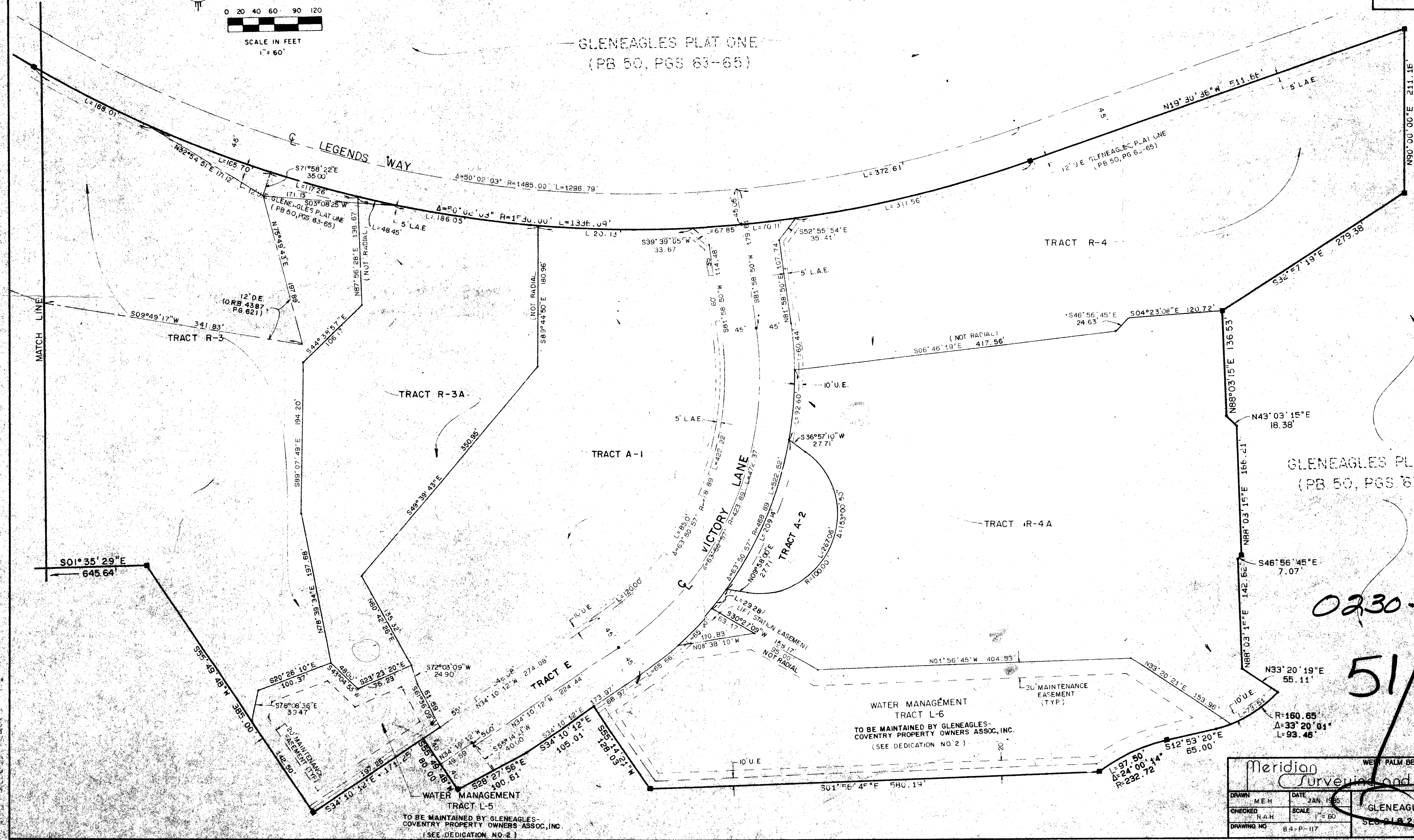
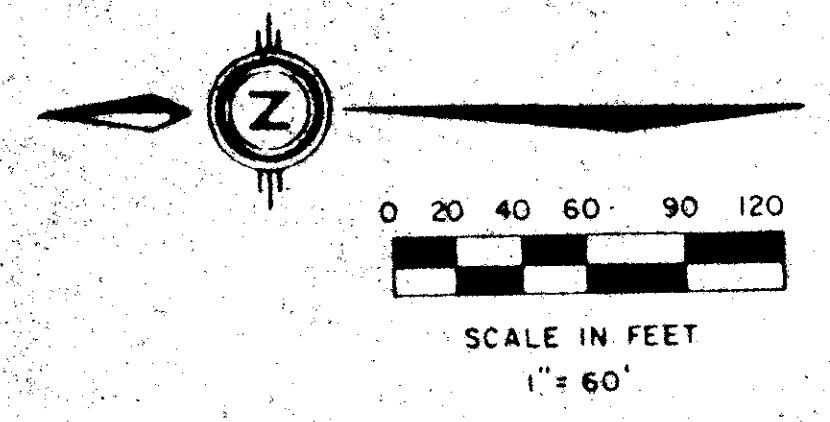
SITUATE IN SECTIONS 21 AND 28, TOWNSHIP 46 SOUTH, RANGE 42 EAST,  
PALM BEACH COUNTY, FLORIDA, BEING A REPLAT OF A PORTION  
OF GLENEAGLES PLAT ONE, (P.B. 50, P. 63 - 65).

SHEET 3 OF 3

**137**



STATE OF FLORIDA  
COUNTY OF PALM BEACH  
THIS PLAT WAS FILED FOR  
RECORD AT \_\_\_\_\_  
THIS \_\_\_\_\_ DAY OF \_\_\_\_\_  
AD, 1984 AND DULY RECORDED  
IN PLAT BOOK \_\_\_\_\_ ON PAGES  
\_\_\_\_\_ AND \_\_\_\_\_  
BY: JOHN B. DUNKLE, CLERK  
D.C.



0230-004  
51/137

Meridian		WEST PALM BEACH, FLORIDA	
Surveying and mapping inc.			
DRAWN	ME-H	DATE	JAN 15 85
CHECKED	RA-H	SCALE	1" = 60'
DRAWING NO.	B4-P-117	GLENEAGLES PLAT FOUR SECTION 28, TWP 46 S, RGE 42 E	

DRAWING NUMBER

DRAWING NUMBER

DRAWING NUMBER

PLAN HOLD CORPORATION • IRVINE, CALIFORNIA  
REORDER BY NUMBER 07549