

DRAWING NUMBER
51/141

DRAWING NUMBER

DRAWING NUMBER

DRAWING NUMBER

A PLANNED UNIT DEVELOPMENT - P.U.D.
BEING A PORTION OF GOLDEN LAKES VILLAGE, P.U.D.

PLAT NO. 1 OF LAKE CRYSTAL

BEING A REPLAT OF A PARCEL OF LAND LYING
PARTIALLY IN THE PALM BEACH FARMS
COMPANY PLAT NO. 9, AS RECORDED IN PLAT BOOK
5, PAGE 58 AND PARTIALLY IN THE PALM BEACH
FARMS COMPANY PLAT NO. 3, AS RECORDED IN
PLAT BOOK 2, PGS. 45-54, OFFICE OF PUBLIC
RECORDS, PALM BEACH COUNTY, FLORIDA.
SECTION 29, TWP 43S RGE 42E

SHEET 2 OF 4

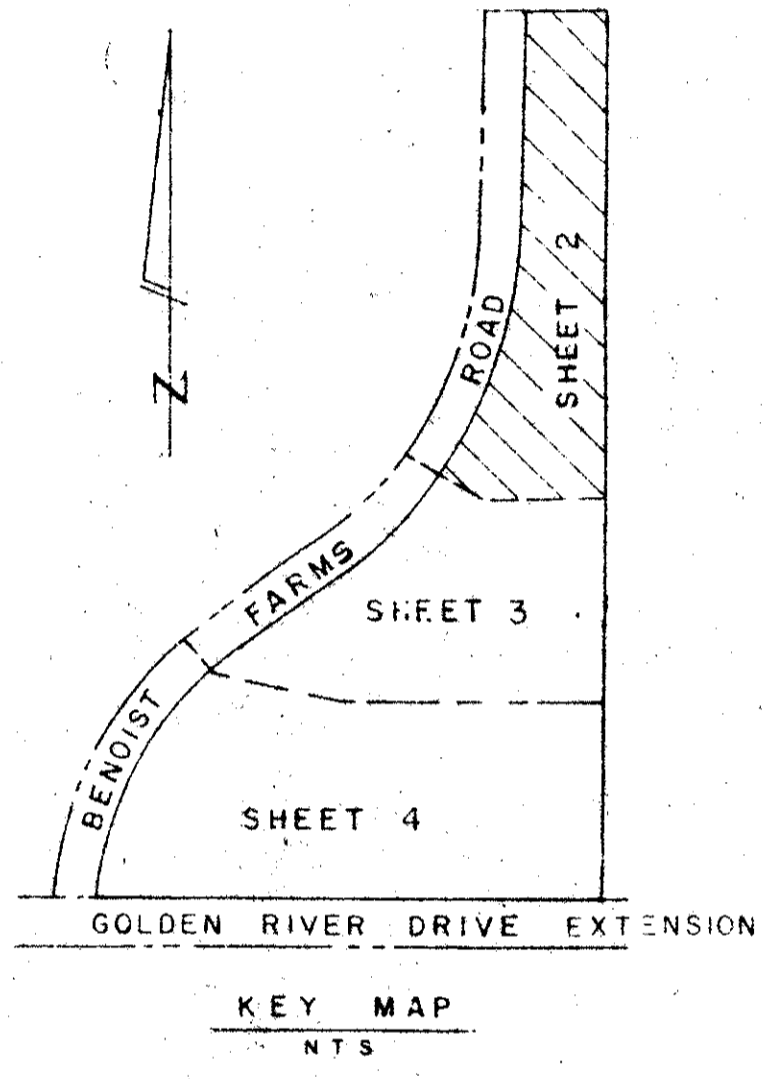
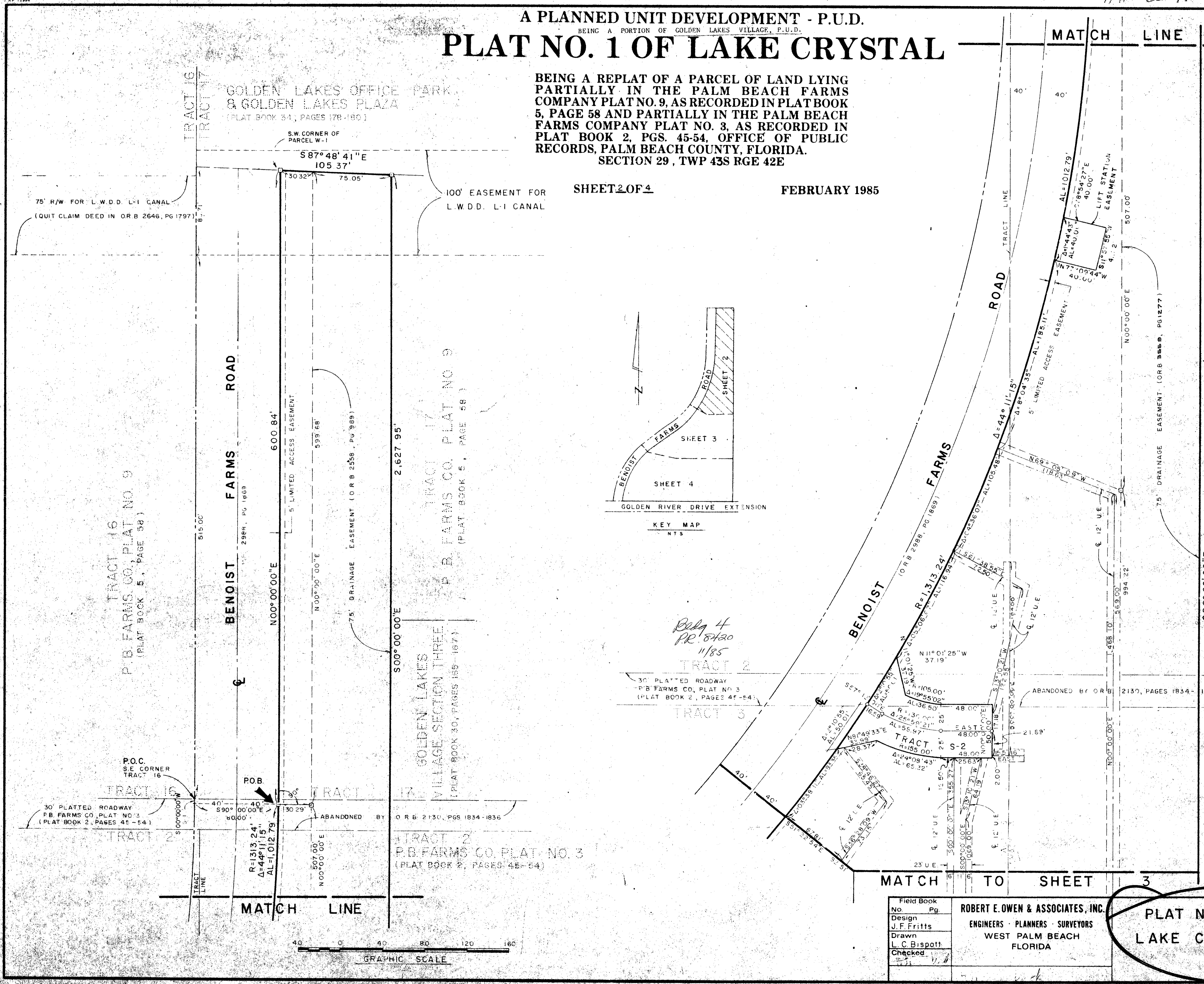
FEBRUARY 1985

141
51

COUNTY OF PALM BEACH
STATE OF FLORIDA

This Plat was filed for record at _____ M
this _____ day of _____
19 _____ and duly recorded in Plat Book No. _____
on page _____

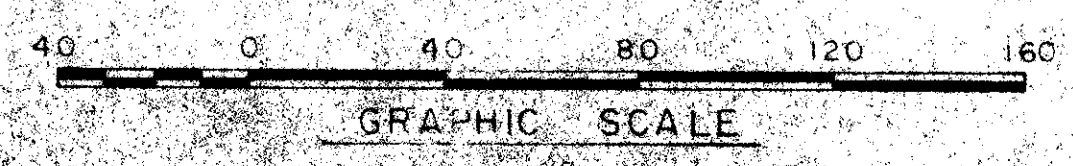
JOHN DUNKLE, Clerk, Circuit Court



*Book 4
PR. 8420
1185*

0251-012

51/141



Field Book	No. Pg.
Design	J. F. Fritts
Drawn	L. C. Bispo
Checked	V. J.

ROBERT E. OWEN & ASSOCIATES, INC.
ENGINEERS - PLANNERS - SURVEYORS
WEST PALM BEACH
FLORIDA

**PLAT NO. 1 OF
LAKE CRYSTAL**

Job No.	84-1085
Scale	1" = 40'
Date	FEB. 1985
Sheet	2
of 4	
File No.	BF-2402