

DRAWING NUMBER
51/143

A PLANNED UNIT DEVELOPMENT - P.U.D. BEING A PORTION OF GOLDEN LAKES VILLAGE, P.U.D. PLAT NO. 1 OF LAKE CRYSTAL

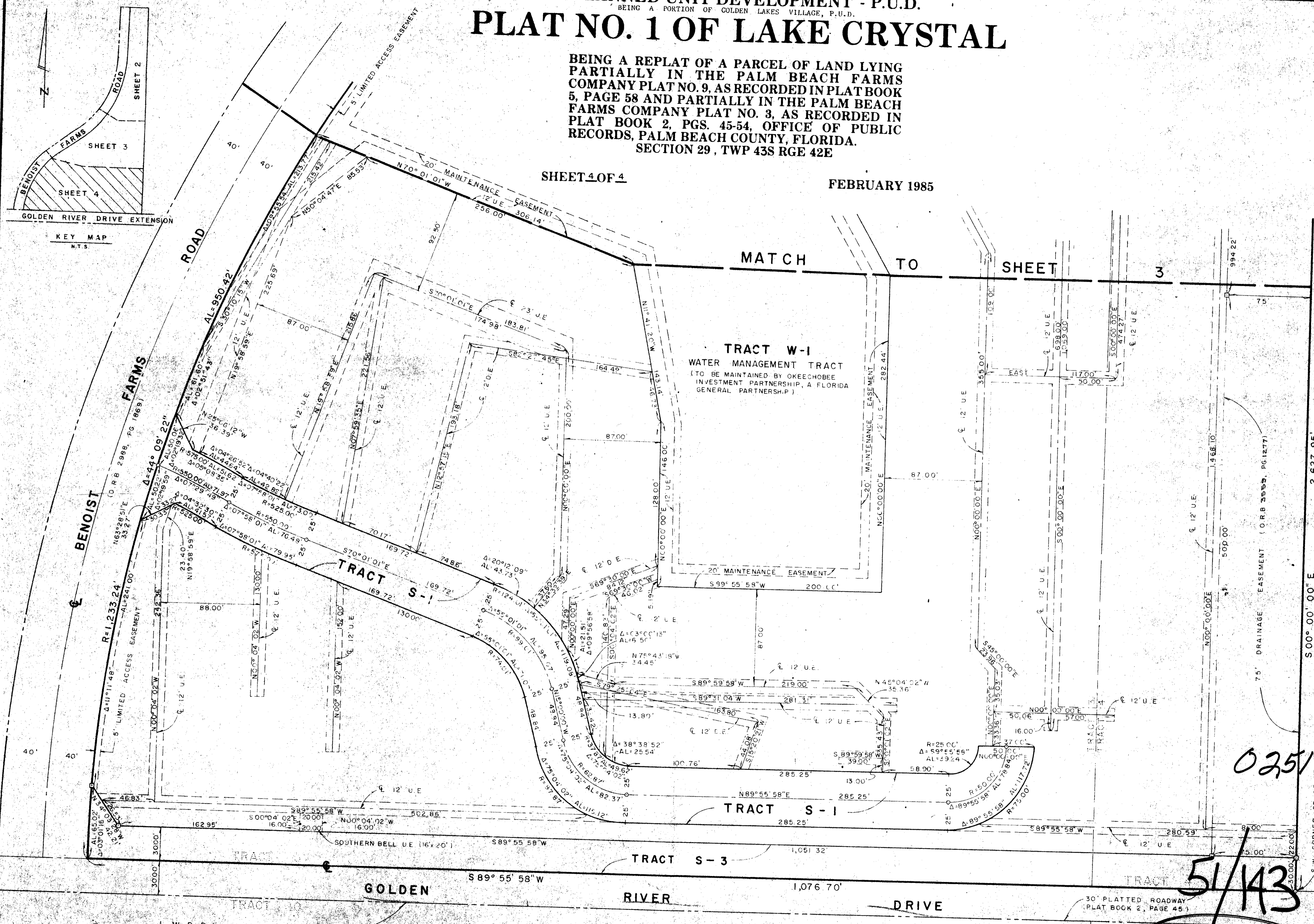
BEING A REPLAT OF A PARCEL OF LAND LYING PARTIALLY IN THE PALM BEACH FARMS COMPANY PLAT NO. 9, AS RECORDED IN PLAT BOOK 5, PAGE 58 AND PARTIALLY IN THE PALM BEACH FARMS COMPANY PLAT NO. 3, AS RECORDED IN PLAT BOOK 2, PGS. 45-54, OFFICE OF PUBLIC RECORDS, PALM BEACH COUNTY, FLORIDA.
SECTION 29, TWP 43S RGE 42E

143

COUNTY OF PALM BEACH
STATE OF FLORIDA
This Plat was filed for record at _____ M
this _____ day of _____
19 _____ and duly recorded in Plat Book No. _____
on page _____
JOHN DUNKLE, Clerk, Circuit Court
By _____ D.C.

SHEET 4 OF 4

FEBRUARY 1985



TRACT W-1
WATER MANAGEMENT TRACT
(TO BE MAINTAINED BY OKEECHOBEE INVESTMENT PARTNERSHIP, A FLORIDA GENERAL PARTNERSHIP)

TRACT S-1

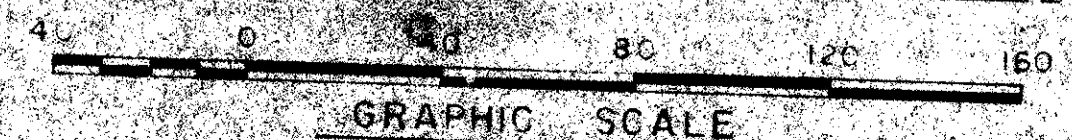
TRACT S-1

TRACT S-3

GOLDEN RIVER DRIVE

DRIVE

L.W.D. LATERAL L-2



0251-012

51/143

Field Book No. Pg.	ROBERT E. OWEN & ASSOCIATES, INC. ENGINEERS - PLANNERS - SURVEYORS WEST PALM BEACH, FLORIDA <i>John T. Krisk</i>	PLAT NO. 1 OF LAKE CRYSTAL	Job No. 84-1085
Design J.F. Fritts			Scale 1" = 40'
Drawn L.C. Bispoitt			Date FEB, 1985
Checked <i>John Krisk</i>			Sheet 4 of 4
			File #

DRAWING NUMBER

DRAWING NUMBER

DRAWING NUMBER

DRAWING NUMBER