

DRAWING NUMBER
51/164

RAINBERRY PARK PLAT NO. 4

PART OF RAINBERRY OF WEST BOCA P.U.D.
SITUATE IN SECTION 19, TOWNSHIP 47 SOUTH, RANGE 42 EAST, PALM BEACH COUNTY, FLORIDA, BEING A REPLAT OF A PORTION OF BLOCK 78, OF THE PALM BEACH FARMS COMPANY'S PLAT NO. 3 (PB 2, PG. 45-54).
SHEET 2 OF 3

17/12/14
SUBDIVISION - Rainberry Park 4
BOOK 51 PAGE 164
FLOOD ZONE PD-1 FLOOD MAP # 2306
QUAD # 54 ZONING RS
SE PUD ZIP CODE 33453
PUD NAME Rainberry of West Boca

164

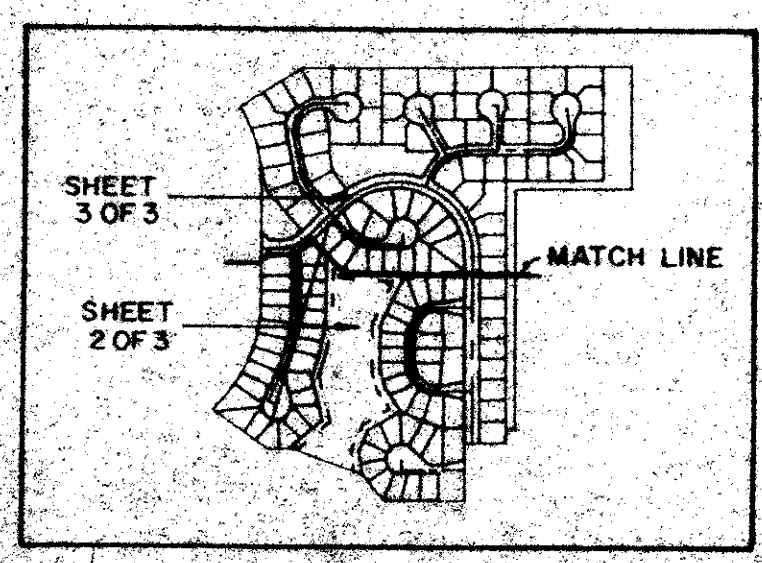
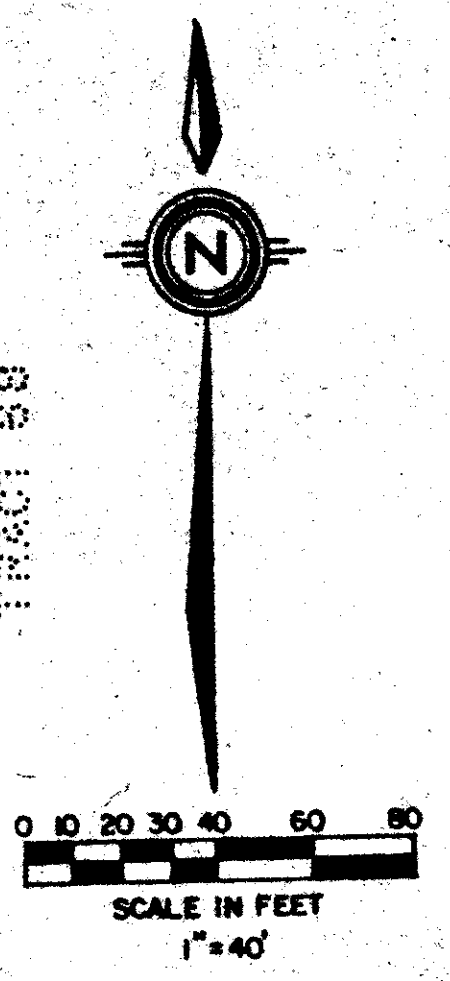
STATE OF FLORIDA
COUNTY OF PALM BEACH
THIS PLAT WAS FILED FOR
RECORD AT
THIS DAY OF
AD, 1984 AND DULY RECORDED
IN PLAT BOOK ON PAGES
AND
JOHN B. BUNKLE, CLERK
CIRCUIT COURT, D.C.

DRAWING NUMBER

DRAWING NUMBER

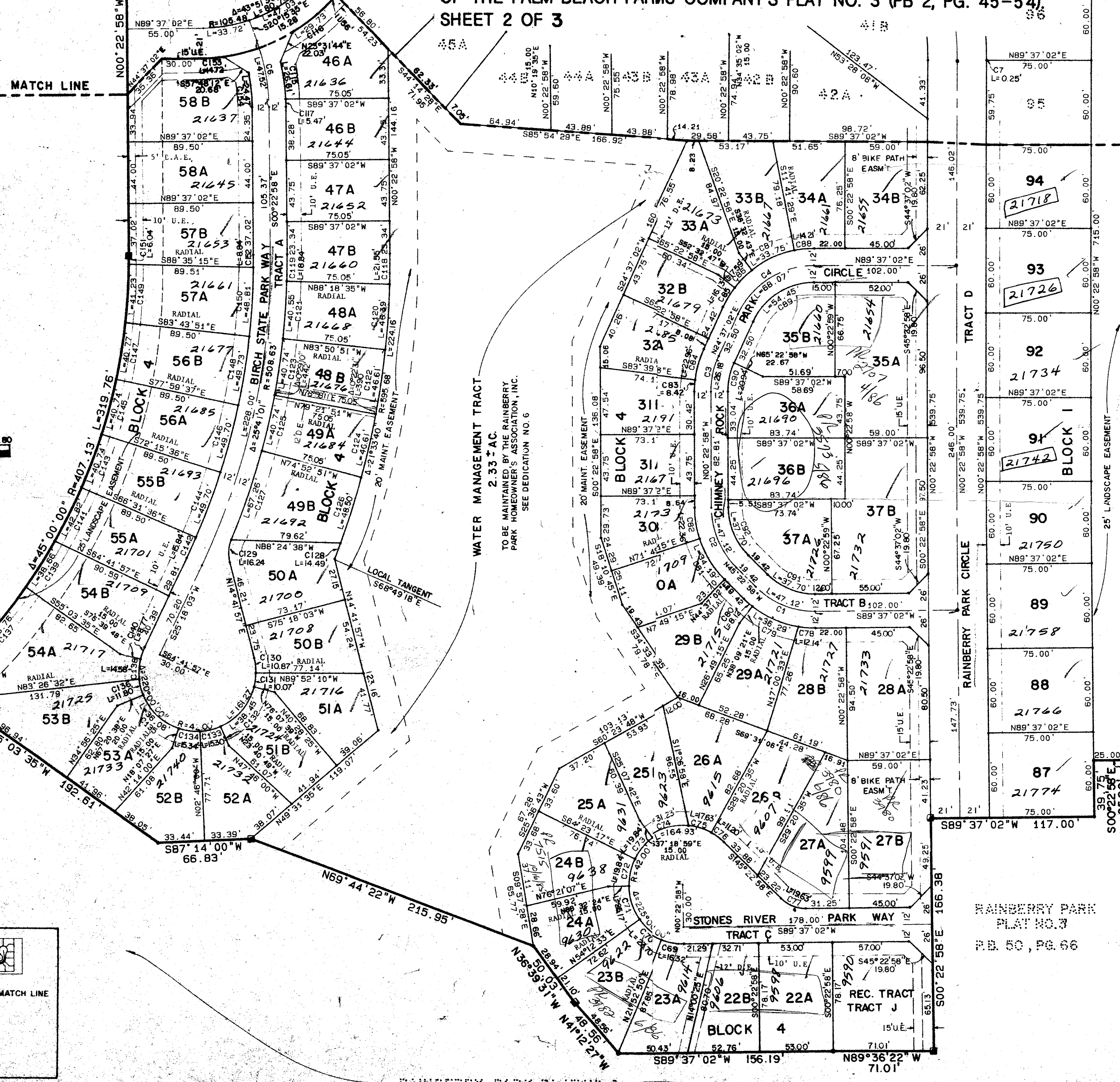
DRAWING NUMBER

BLOCK 78
PALM BEACH FARMS COMPANY'S PLAT NO. 3
P.B. 2, PGS. 45-54
TRACT 88



MATCH LINE

MATCH LINE



REPLAT OF BOCA LAGO
(PB 31, PGS 62-71)

NO.	DELTA	RADIUS	LENGTH	NO.	DELTA	RADIUS	LENGTH
C1	45.00	0.00	60.00	C78	9.39	46.72	12.14
C2	45.00	0.00	60.00	C79	28.32	33.72	72.00
C3	45.00	0.00	60.00	C80	6.27	40.75	8.12
C4	65.00	0.00	80.00	C81	27.13	13.72	34.19
C5	32.51	29.79	130.00	C82	18.46	27.72	22.36
C6	0.03	39.23	236.00	C83	4.43	39.72	8.45
C7	4.56	24.24	80.00	C84	18.46	27.72	22.36
C8	0.03	39.23	236.00	C85	11.81	47.47	16.13
C9	7.24	11.11	236.00	C86	4.00	04.75	17.95
C10	15.56	47.11	236.00	C87	26.53	14.72	33.75
C11	14.46	04.75	236.00	C88	45.00	00.00	14.24
C12	13.06	28.72	103.00	C89	25.00	00.00	54.45
C13	26.51	06.00	60.00	C90	45.00	00.00	20.34
C14	27.31	49.72	28.33	C91	45.00	00.00	37.70
C15	32.03	38.72	60.00	C92	45.00	00.00	48.00
C16	1.33	27.72	60.00	C93	19.05	44.72	34.33
C17	41.44	30.25	18.21	C94	10.47	54.72	36.56
C18	22.16	13.72	18.33	C95	37.06	25.72	23.54
C19	67.25	56.72	42.00	C96	84.00	11.72	36.65
C20	42.02	21.72	42.00	C97	27.02	46.72	103.00
C21	45.00	00.00	30.82	C98	26.50	00.00	19.67
C22	45.00	00.00	33.46	C99	17.50	44.72	60.42
C23	58.46	05.72	42.00	C100	36.42	00.00	42.00
C24	127.46	22.72	30.00	C101	20.51	32.72	194.00
C25	34.48	32.72	15.20	C102	41.39	00.00	30.53
C26	68.03	27.72	42.00	C103	20.42	01.72	42.00
C27	58.46	05.72	42.00	C104	16.22	13.72	12.00
C28	58.46	05.72	42.00	C105	16.51	21.72	194.00
C29	18.02	36.72	11.78	C106	16.44	46.72	16.28
C30	38.03	27.72	28.71	C107	28.00	30.72	194.00
C31	3.16	31.72	133.00	C108	33.14	26.72	42.00
C32	19.42	27.72	43.43	C109	34.12	04.72	26.07
C33	34.37	08.72	15.11	C110	13.18	40.72	8.74
C34	64.13	26.72	42.00	C111	13.18	40.72	127.00
C35	53.74	25.72	34.25	C112	10.46	34.72	41.62
C36	57.36	48.72	42.00	C113	13.27	57.72	29.73
C37	36.36	08.72	26.83	C114	3.00	43.72	7.41
C38	53.20	37.72	23.28	C115	10.14	05.72	148.97
C39	2.74	08.72	42.00	C116	13.27	57.72	26.61
C40	53.20	37.72	23.28	C117	2.04	22.72	595.68
C41	7.46	08.72	32.00	C118	2.04	22.72	520.63
C42	4.41	17.72	145.00	C119	4.27	46.72	535.58
C43	18.01	12.72	28.78	C120	4.27	46.72	46.87
C44	18.01	12.72	28.78	C121	4.27	44.72	820.83
C45	8.17	50.72	26.00	C122	4.28	50.72	535.68
C46	105.15	52.72	42.00	C123	4.28	00.00	40.74
C47	50.01	18.72	36.88	C124	4.28	00.00	46.87
C48	53.57	11.72	45.00	C125	4.28	58.72	46.74
C49	75.08	25.72	55.08	C126	4.29	00.00	48.50
C50	38.05	36.72	17.06	C127	7.24	08.72	500.63
C51	13.38	18.72	23.08	C128	1.24	39.72	14.49
C52	28.26	02.72	48.44	C129	37.13	14.72	16.24
C53	7.43	40.72	33.00	C130	14.49	48.72	42.00
C54	33.29	13.72	26.30	C131	14.49	48.72	10.07
C55	28.26	02.72	48.44	C132	52.26	50.72	38.45
C56	34.28	30.72	27.00	C133	20.52	26.72	15.30
C57	18.18	18.72	78.76	C134	50.55	50.72	15.34
C58	22.05	33.72	17.36	C135	49.13	11.72	36.08
C59	21.03	07.72	9.19	C136	16.05	55.72	11.80
C60	11.84	23.72	18.78	C137	5.27	46.72	68.78
C61	8.46	07.72	38.00	C138	8.46	07.72	38.00
C62	4.43	05.72	396.00	C139	26.26	00.00	38.65
C63	9.30	57.72	145.00	C140	11.62	11.72	6.97
C64	18.04	36.72	145.00	C141	11.62	11.72	12.82
C65	5.15	54.72	145.00	C142	1.49	39.72	496.53
C66	9.49	50.72	153.00	C143	5.44	00.00	407.13
C67	26.28	14.72	66.08	C144	5.44	00.00	496.83
C68	4.26	18.72	388.00	C145	5.44	00.00	407.13
C69	32.19	43.72	42.00	C146	5.44	00.00	496.83
C70	32.19	43.72	42.00	C147	5.44	14.72	407.13
C71	14.49	19.72	26.42	C148	5.44	14.72	496.63
C72	27.04	19.72	19.84	C149	5.48	07.72	407.13
C73	27.04	19.72	19.84	C150	5.37	54.72	48.81
C74	4.26	18.72	42.00	C151	5.37	54.72	48.81
C75	24.02	36.72	42.00	C152	4.00	02.72	67.63
C76	15.18	27.72	11.20	C153	4.00	02.72	17.33
C77	45.00	00.00	35.00	C154	4.00	02.72	124.97

RAINBERRY PARK PLAT NO. 4
P.B. 49, P. 66

Meridian
Surveying and mapping inc.

DATE: FEB. 1984
SCALE: 1"=40'
DRAWING NO.: 93-P-048

RAINBERRY PARK PLAT NO. 4