

DRAWING NUMBER
51/169

PLAT OF SHERWOOD GLEN

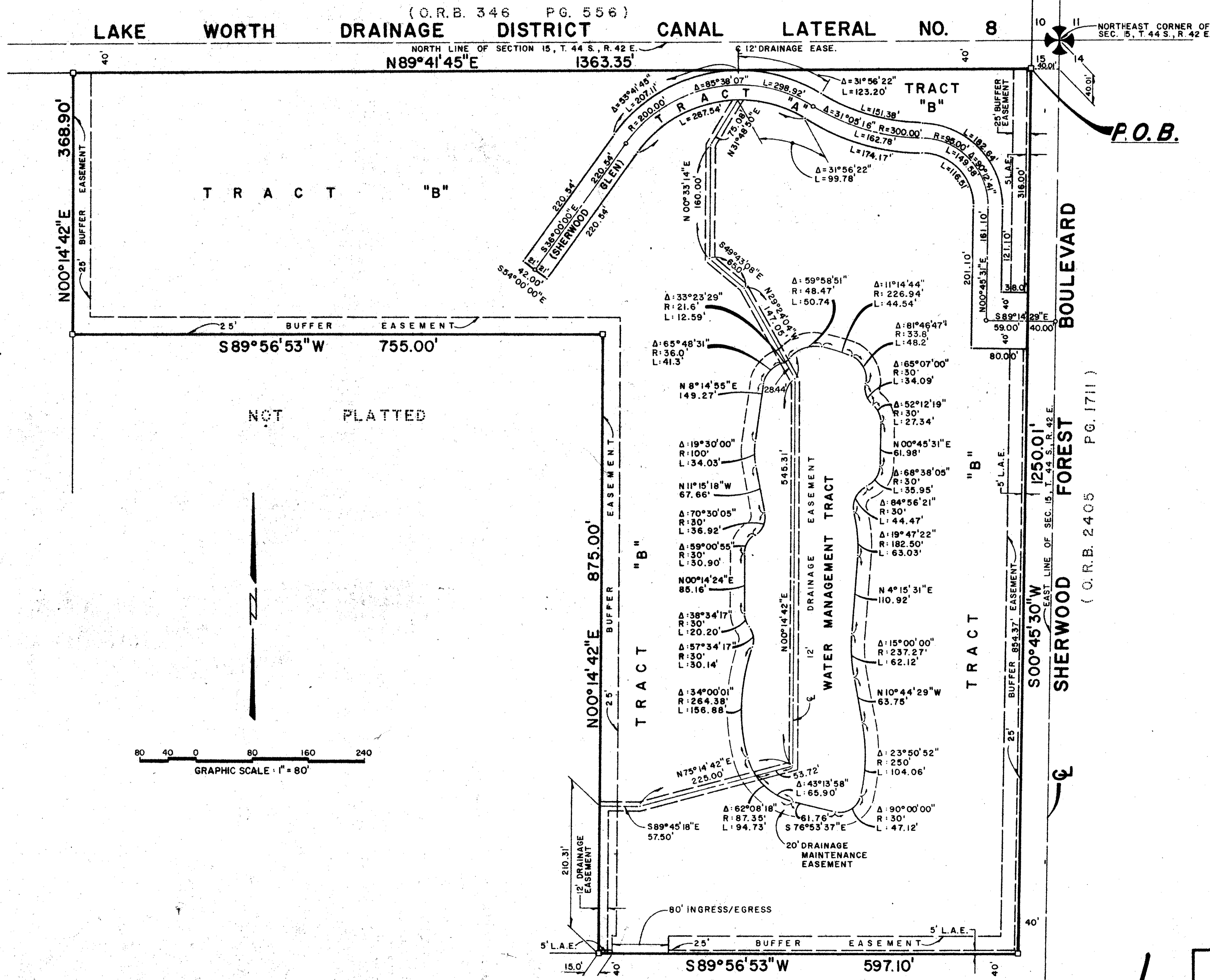
A PLANNED UNIT DEVELOPMENT
MAY 7, 1985
SHEET 2 OF 2

169

31

STATE OF FLORIDA
COUNTY OF PALM BEACH
This Plat was filed for record at
M. this day of 19
and duly recorded in Plat Book No.
on Page
John B. Dunkle, Clerk Circuit Court
By _____ D.C.

DRAWING NUMBER
THE PINES PLAT NO. 2
P.B. 38, P. 187-189

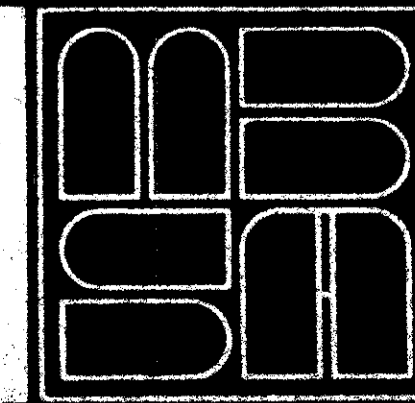


GRAPHIC SCALE: 1" = 80'

0452-000

Sherwood Glen
15/1/142
BOOK 51 PAGE 169
FLOOD ZONE B FLOOD MAP 4/16/04
QUAD # 32 ZONING RS
SU PUD ZIP CODE 33406
PUD NAME SHERWOOD GLEN

MICHAEL B. SCHORAH
& ASSOCIATES, INC.
ENGINEERS • PLANNERS • DEVELOPMENT CONSULTANTS
TEL (305) 968-0080
1850 FOREST HILL BLVD., SUITE 205
WEST PALM BEACH, FLORIDA 33406



PURDY LANE
(O.R.B. 2784 PG. 424)
SHERWOOD GLEN 51/169

DRAWING NUMBER

DRAWING NUMBER

DRAWING NUMBER

PLAN HOLD CORPORATION • IRVINE, CALIFORNIA
REGISTERED BY NUMBER 07548

PLAN HOLD CORPORATION • IRVINE, CALIFORNIA
REGISTERED BY NUMBER 07548

PLAN HOLD CORPORATION • IRVINE, CALIFORNIA
REGISTERED BY NUMBER 07548