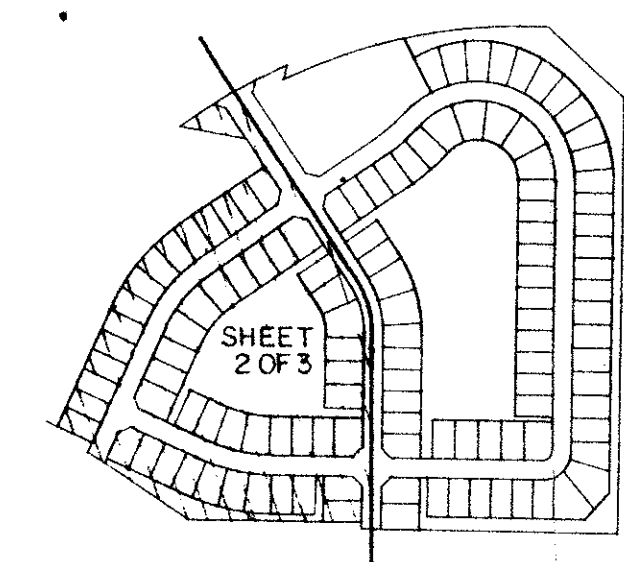


51/187

187

A PART OF TARTAN LAKES, A P.U.D.  
WATERCHASE WEST PLAT NO. 1  
A REPLAT OF A PORTION OF TARTAN LAKES PLAT NO. 3, PARCEL A, (P.U.D.)  
SITUATE IN SECTION 14, TOWNSHIP 45 SOUTH, RANGE 42 EAST,  
PALM BEACH COUNTY, FLORIDA,  
SHEET 2 OF 3

STATE OF FLORIDA  
COUNTY OF PALM BEACH  
THIS PLAT WAS FILED FOR  
RECORD AT \_\_\_\_\_  
THIS \_\_\_\_\_ DAY OF \_\_\_\_\_  
AD, 1985 AND DULY RECORDED  
IN PLAT BOOK \_\_\_\_\_ ON PAGES  
\_\_\_\_\_ AND \_\_\_\_\_  
JOHN B. DUNKLE, CLERK  
BY: \_\_\_\_\_, D.C.



NO.	DELTA	RADIUS	LENGTH
C1	5° 59' 15"	255.00'	255.00'
C2	15° 38' 32"	75.00'	20.48'
C3	22° 55' 06"	75.00'	30.00'
C4	23° 34' 41"	75.00'	30.86'
C5	1° 32' 16"	105.00'	2.82'
C6	1° 32' 16"	205.00'	5.50'
C7	1° 34' 25"	555.49'	15.25'
C8	1° 34' 21"	455.48'	12.50'
C9	2° 09' 43"	365.02'	13.77'
C10	2° 09' 43"	265.02'	10.00'
C11	4° 38' 46"	365.02'	29.60'
C12	4° 38' 46"	265.02'	21.49'
C13	0° 41' 17"	599.65'	7.20'
C14	0° 41' 17"	499.65'	6.00'
C15	3° 12' 39"	599.65'	33.60'
C16	3° 12' 39"	499.65'	28.00'
C17	1° 53' 13"	479.57'	15.79'
C18	1° 53' 13"	379.57'	12.50'
C19	10° 17' 47"	115.02'	20.67'
C20	1° 44' 48"	449.65'	13.71'
C21	1° 44' 48"	349.65'	10.66'
C22	3° 29' 31"	449.65'	27.40'
C23	3° 29' 31"	349.65'	21.31'
C24	7° 29' 14"	229.57'	30.00'
C25	90° 00' 00"	50.00'	78.54'

SUBDIVISION Waterchase West 1  
BOOK 51 PAGE 187  
FLOOD ZONE B FLOOD MAP # 190B  
SLAB # 34 ZONING RTS  
DE POD ZIP CODE 33459  
PUD NAME TARTAN LAKES

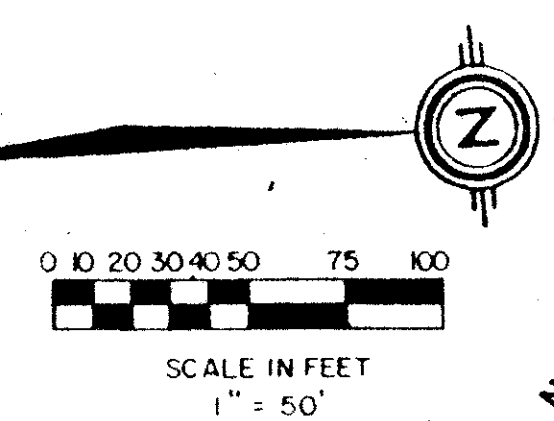
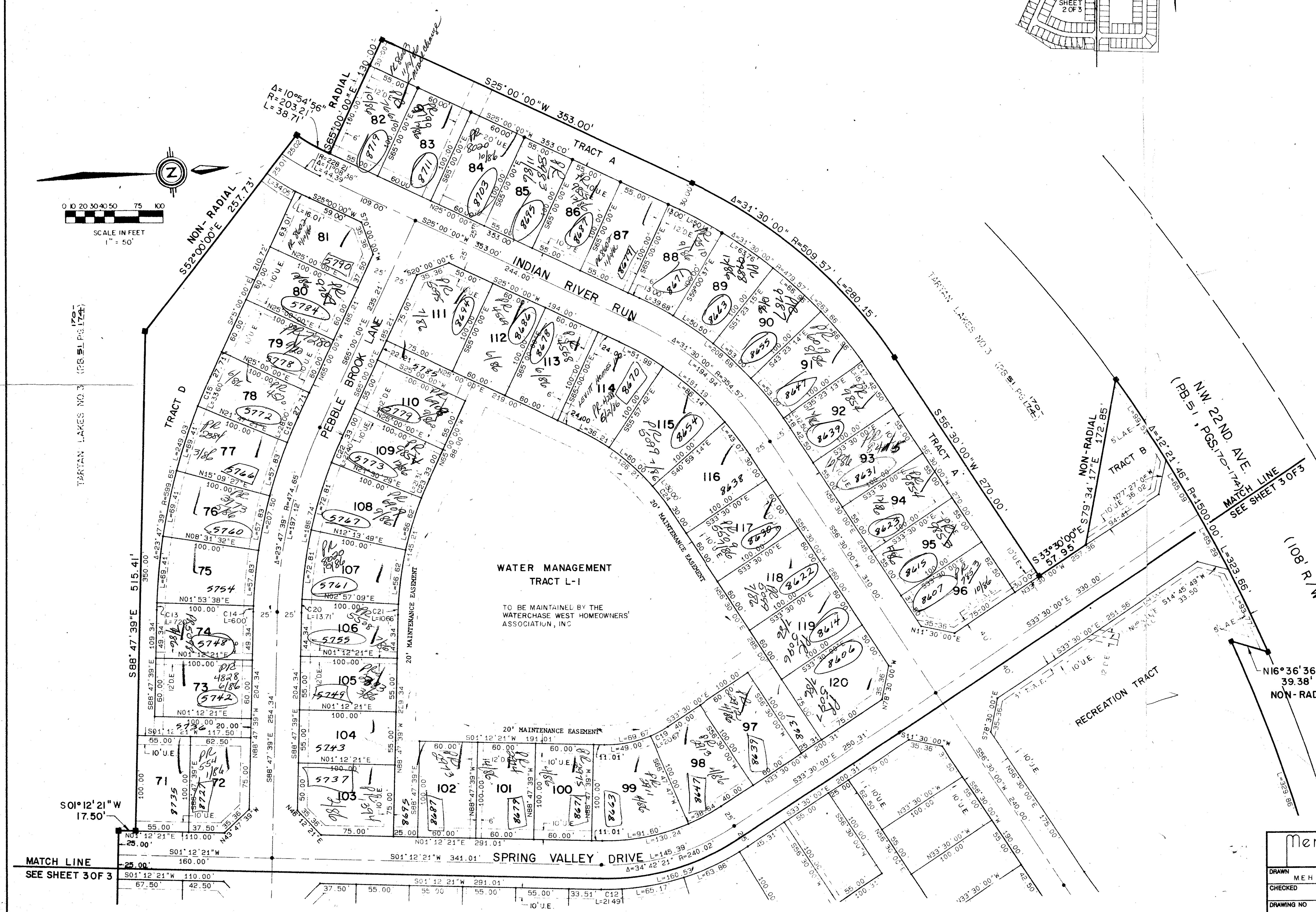
up 10/17/85  
map. 7  
FSZ 24  
Design Cluster  
Per. A  
Rainbow Lakes PUD

0316-302  
51/187

Meridian Surveying and mapping inc.  
WEST PALM BEACH, FLORIDA

DRAWN	MEH	DATE	DEC 1984
CHECKED		SCALE	1" = 50'
DRAWING NO	84-P1-085		

WATERCHASE WEST PLAT NO. 1  
A PART OF TARTAN LAKES P.U.D.



DRAWING NUMBER

DRAWING NUMBER

DRAWING NUMBER

DRAWING NUMBER 51/187

DRAWING NUMBER