

DRAWING NUMBER
51/188

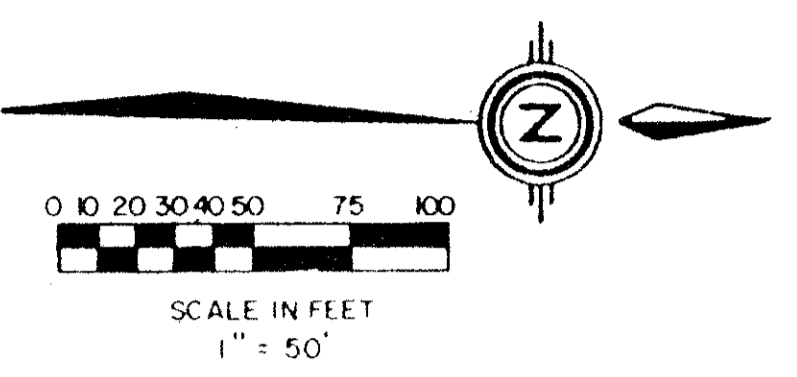
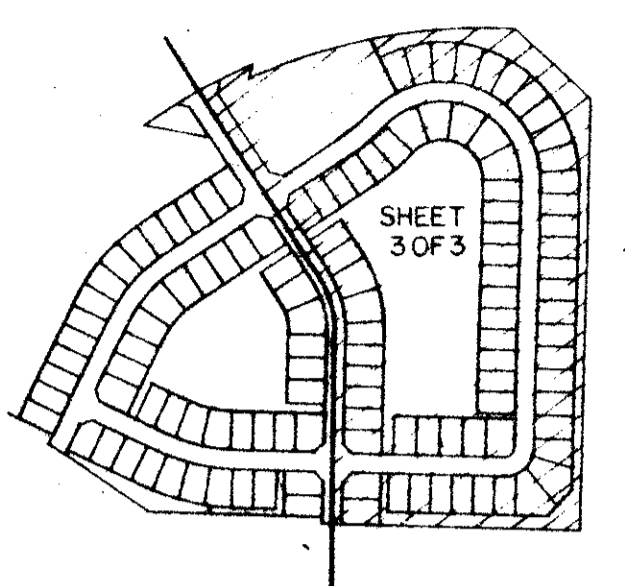
A PART OF TARTAN LAKES, A P.U.D. WATERCHASE WEST PLAT NO. 1

A REPLAT OF A PORTION OF TARTAN LAKES PLAT NO. 3, PARCEL A, (P.U.D.)
SITUATE IN SECTION 14, TOWNSHIP 45 SOUTH, RANGE 42 EAST,
PALM BEACH COUNTY, FLORIDA,

SHEET 3 OF 3

188

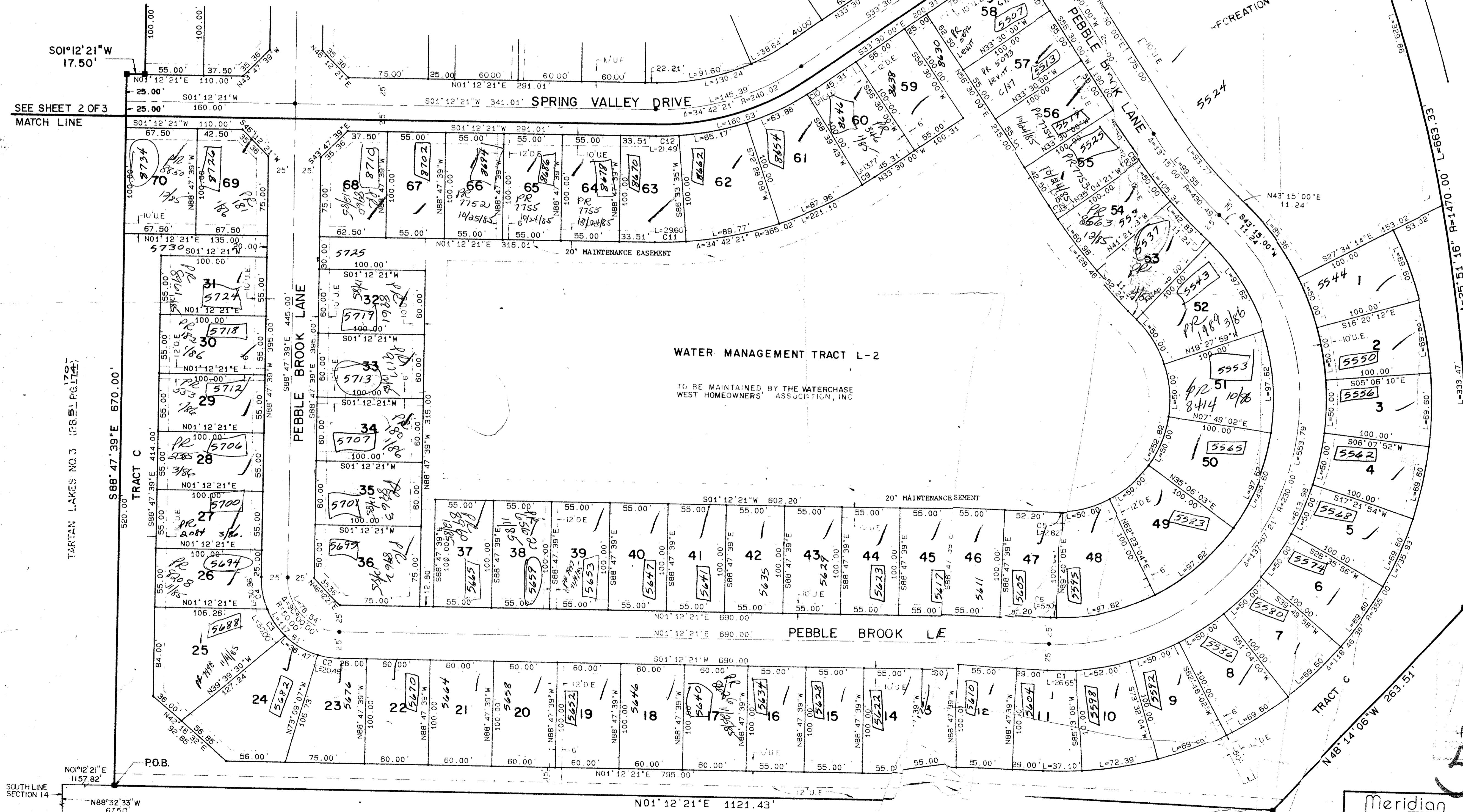
STATE OF FLORIDA
COUNTY OF PALM BEACH
THIS PLAT WAS FILED FOR
RECORD AT _____
THIS _____ DAY OF _____
AD, 1985 AND DULY RECORDED
IN PLAT BOOK _____ ON PAGES
_____ AND _____
AND _____
JOHN B. DUNKLE, CLERK
BY: _____, D.C.



DRAWING NUMBER

DRAWING NUMBER

DRAWING NUMBER



NO.	DELTA	RADIUS	LENGTH
C1	5° 59' 15"	255.00	26.65'
C2	15° 38' 32"	75.00	20.48'
C3	22° 55' 06"	75.00	30.00'
C4	23° 34' 41"	75.00	30.00'
C5	1° 32' 16"	105.00	30.86'
C6	1° 32' 16"	205.00	5.50'
C7	1° 34' 21"	555.49	15.25'
C8	1° 34' 21"	455.49	12.50'
C9	2° 09' 43"	365.02	13.77'
C10	2° 09' 43"	265.02	29.60'
C11	4° 38' 46"	365.02	10.00'
C12	4° 38' 46"	265.02	21.49'
C13	0° 41' 17"	599.65	7.20'
C14	0° 41' 17"	499.65	6.00'
C15	3° 12' 39"	599.65	33.60'
C16	3° 12' 39"	499.65	28.00'
C17	1° 53' 13"	479.57	15.79'
C18	1° 53' 13"	379.57	12.50'
C19	10° 17' 47"	115.02	20.87'
C20	1° 44' 48"	449.65	13.71'
C21	1° 44' 48"	349.65	10.68'
C22	3° 29' 31"	449.65	27.40'
C23	3° 29' 31"	349.65	21.31'
C24	7° 29' 14"	229.57	30.00'
C25	90° 00' 00"	50.00	78.54'

See Back

0316-302

*up 10/14/85
Design Clusters
FSZ 24
14/05/02
imp 7
177*

51/188

Meridian Surveying and Mapping, Inc.
WEST PALM BEACH, FLORIDA

DRAWN M.E.H. DATE DEC. 1984
CHECKED SCALE 1" = 50' WATERCHASE WEST PLAT NO. 1
DRAWING NO. 84-P-085 A PART OF TARTAN LAKES P.U.D.

REQUIRED LWOD 6" CANAL
(O.R.B. 1732, PGS. 612-651)