

DRAWING NUMBER  
**51/201**

# HARWICH COURTS

A PLANNED RESIDENTIAL DEVELOPMENT

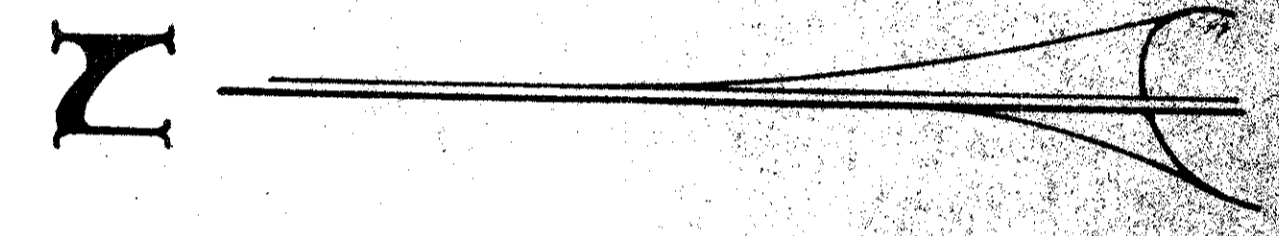
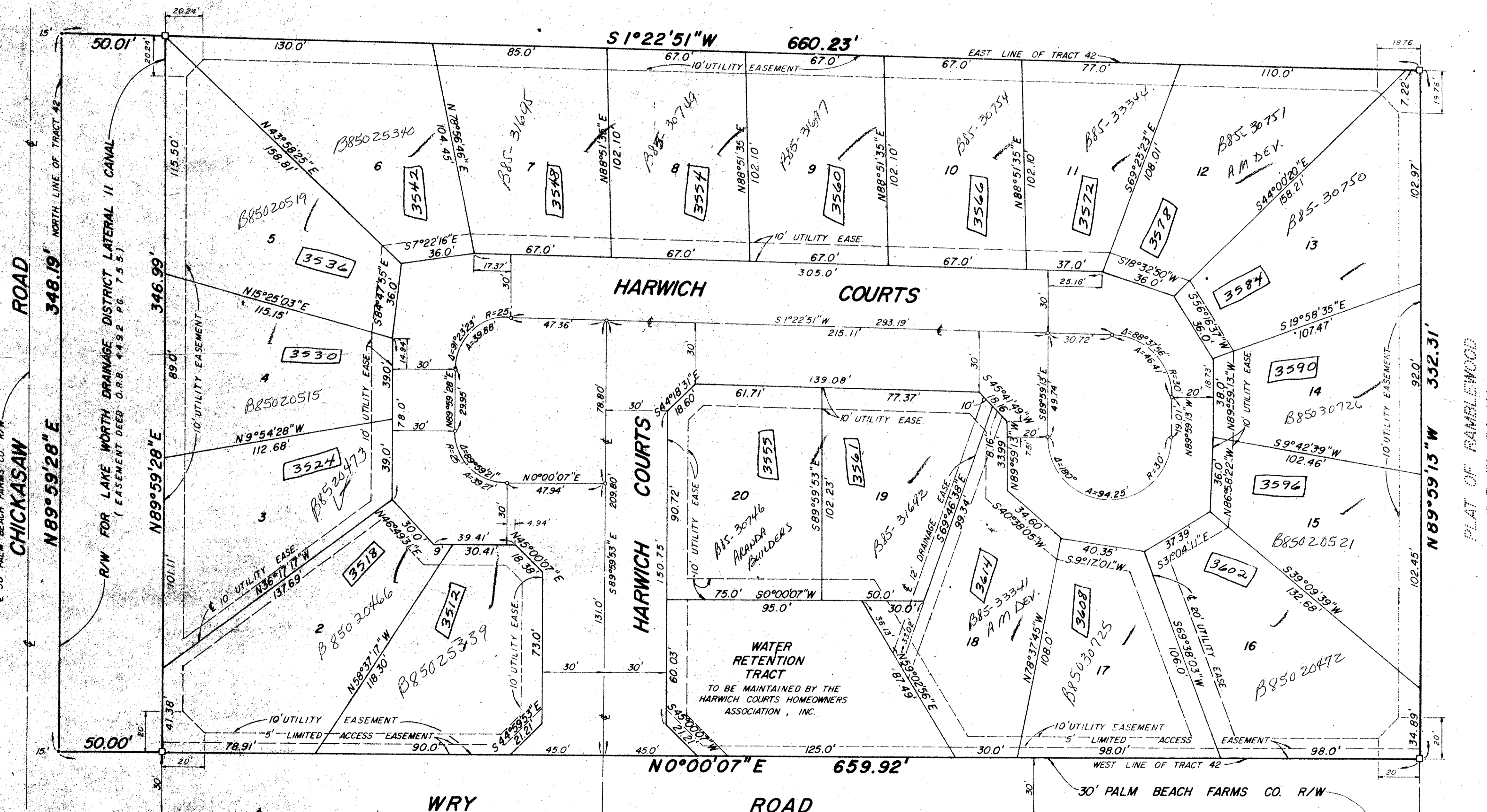
SHEET 2 OF 2

APRIL 1985

201  
51

STATE OF FLORIDA  
COUNTY OF PALM BEACH  
This Plat was filed for record at  
M. this day of 19  
and duly recorded in Plat Book  
on Page  
John B. Dunkle, Clerk Circuit Court  
By

TRACT 41  
PALM BEACH FARMS CO. PLAT NO. 3  
P.B. 2, PG. 45



GRAPHIC SCALE  
SCALE: 1" = 30'

1000-040

dk 10/18/85  
22/10/85

SUBDIVISION \* Harwich Courts  
BOOK 51 PAGE 201  
FLOOD ZONE B FLOOD MAP # 160A  
QUAD # 33 ZONING RM  
SE PRD ZIR DE 5/10  
PUD NAME NYA

**51/201**

## HARWICH COURTS

DRAWING NUMBER

DRAWING NUMBER

DRAWING NUMBER

TRACT 43  
BLOCK 22  
PALM BEACH FARMS CO.  
PLAT NO. 3  
P.B. 2, PG. 45

PLAT OF RAMBLEWOOD TWO  
P.B. 35, PG. 79

THIS INSTRUMENT WAS PREPARED BY KENT W. EWING, JR.  
IN THE OFFICE OF EWING AND SHIRLEY, INC.  
3767 LAKE WORTH ROAD, SUITE 118  
LAKE WORTH, FLORIDA 33461

EWING AND SHIRLEY, INC.  
LAND SURVEYORS AND PLANNERS  
3767 Lake Worth Road - Suite 118  
Lake Worth Florida 33461  
(305) 968-0421

Ret. 84-52(A)