

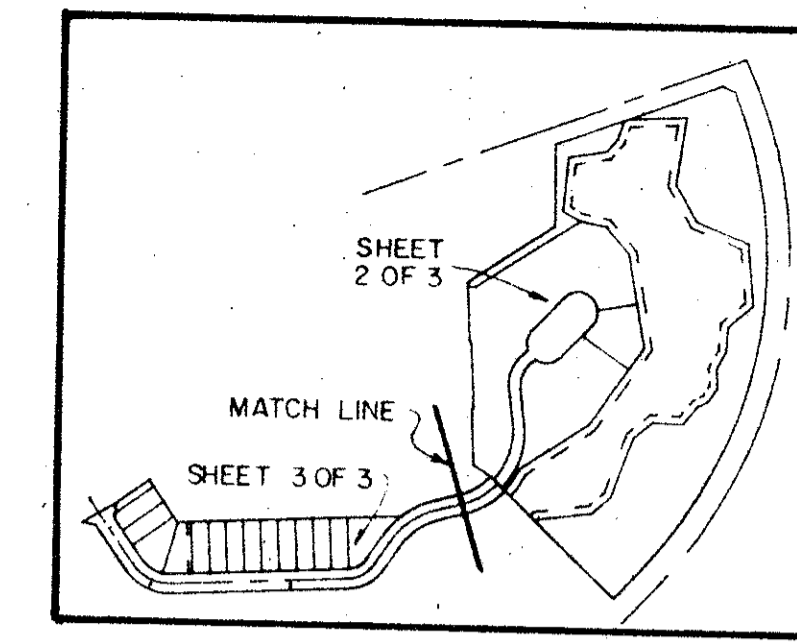
DRAWING NUMBER
52/2

GLENEAGLES PLAT FIVE

PARCEL G, PART OF COVENTRY, A P.U.D.

SITUATE IN SECTIONS 21 AND 28, TOWNSHIP 46 SOUTH, RANGE 42 EAST,
PALM BEACH COUNTY, FLORIDA, BEING A REPLAT OF A PORTION
OF GLENEAGLES PLAT ONE, (P.B. 50, P. 63 - 65).

SHEET 2 OF 3

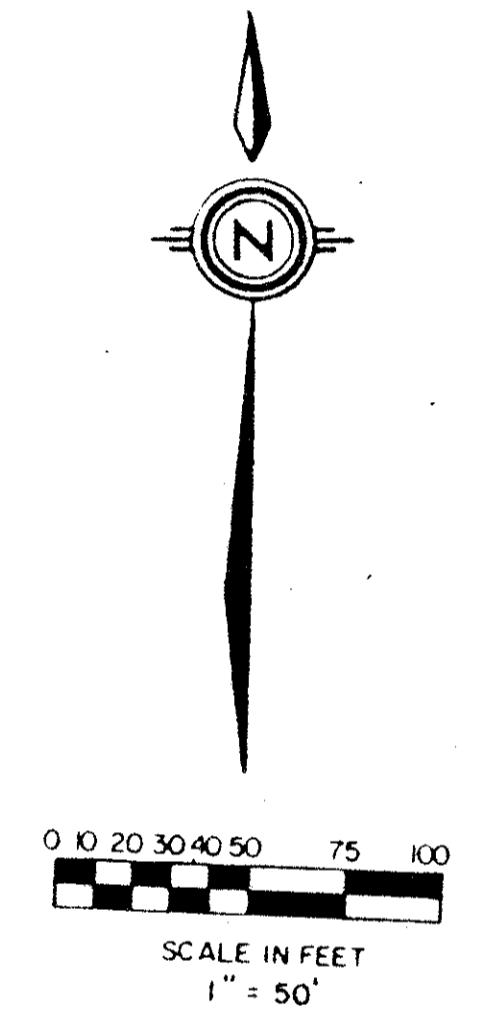
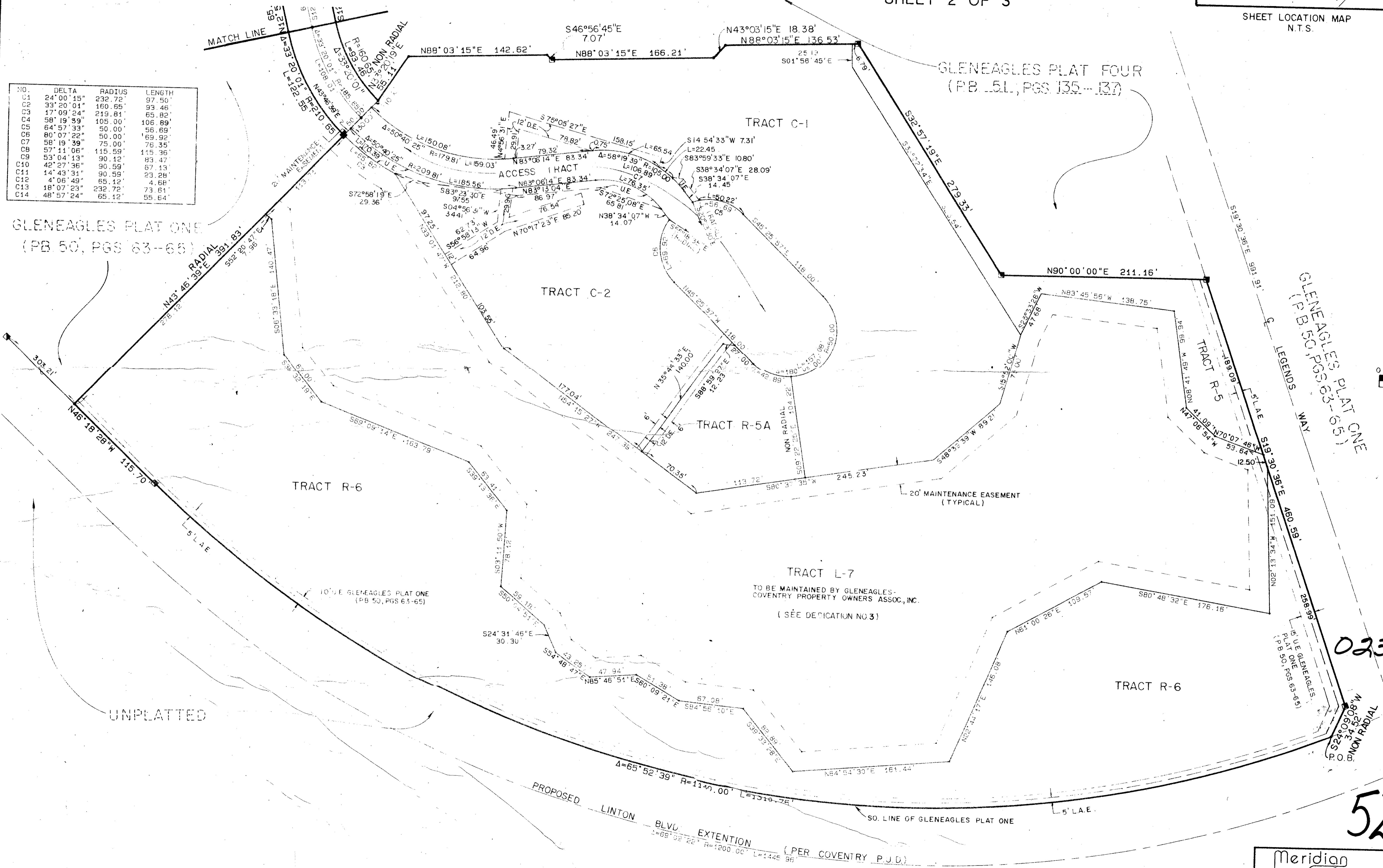


52 / **2**

STATE OF FLORIDA
COUNTY OF PALM BEACH
THIS PLAT WAS FILED FOR
RECORD AT _____
THIS _____ DAY OF _____
AD, 1985 AND DULY RECORDED
IN PLAT BOOK _____ ON PAGES
_____ AND _____
JOHN B. DUNKLE, CLERK
BY: _____, D.C.

NO.	DELTA	RADIUS	LENGTH
C1	24° 00' 15"	232.72'	97.50'
C2	33° 20' 04"	160.65'	93.46'
C3	17° 09' 24"	219.81'	85.82'
C4	58° 19' 39"	105.00'	106.89'
C5	64° 57' 33"	50.00'	55.69'
C6	80° 07' 22"	50.00'	69.92'
C7	58° 19' 39"	75.00'	76.35'
C8	57° 11' 06"	115.59'	115.36'
C9	53° 04' 13"	90.12'	93.47'
C10	42° 27' 36"	90.59'	67.13'
C11	14° 43' 31"	90.59'	23.28'
C12	4° 06' 49"	65.12'	4.68'
C13	18° 07' 23"	232.72'	73.61'
C14	48° 57' 24"	65.12'	55.64'

GLENEAGLES PLAT ONE
(PB 50, PGS 63-65)



0230-002

52/2

Meridian Surveying and mapping inc. WEST PALM BEACH, FLORIDA

DRAWN	M.E.H.	DATE	JAN. 1985
CHECKED	R.A.H.	SCALE	1" = 50'
DRAWING NO	84-P-123		

GLENEAGLES PLAT FIVE
SEC. 21 & 28, TWP. 46S., RGE. 42E.

DRAWING NUMBER
PLAN HOLD CORPORATION • IRVINE, CALIFORNIA
RECORD BY NUMBER 0230

DRAWING NUMBER
PLAN HOLD CORPORATION • IRVINE, CALIFORNIA
RECORD BY NUMBER 0230

DRAWING NUMBER
PLAN HOLD CORPORATION • IRVINE, CALIFORNIA
RECORD BY NUMBER 0230