

DRAWING NUMBER
52/5

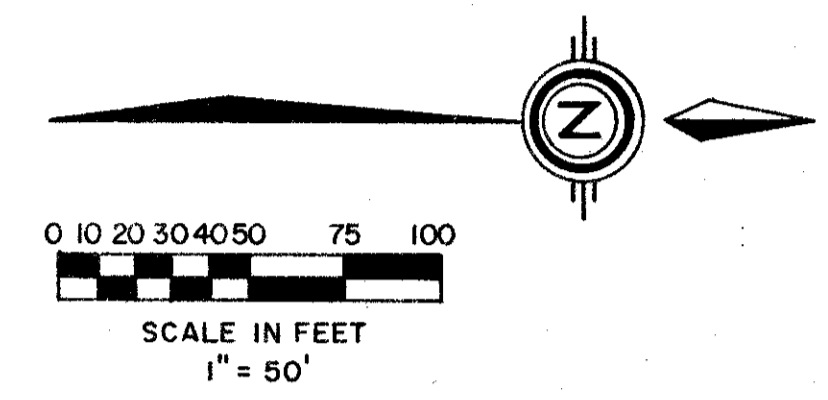
LUCERNE LAKES GOLF COLONY II

A PORTION OF LUCERNE LAKES, A P.U.D.
BEING A REPLAT OF A PORTION OF BLOCK 29 OF PALM BEACH
FARMS COMPANY'S PLAT NO. 3, PLAT BOOK 2, PAGES 45-54,
SITUATE IN SECTION 28, TOWNSHIP 44 SOUTH, RANGE 42 EAST,
PALM BEACH COUNTY, FLORIDA.

SHEET 2 OF 2

52/5

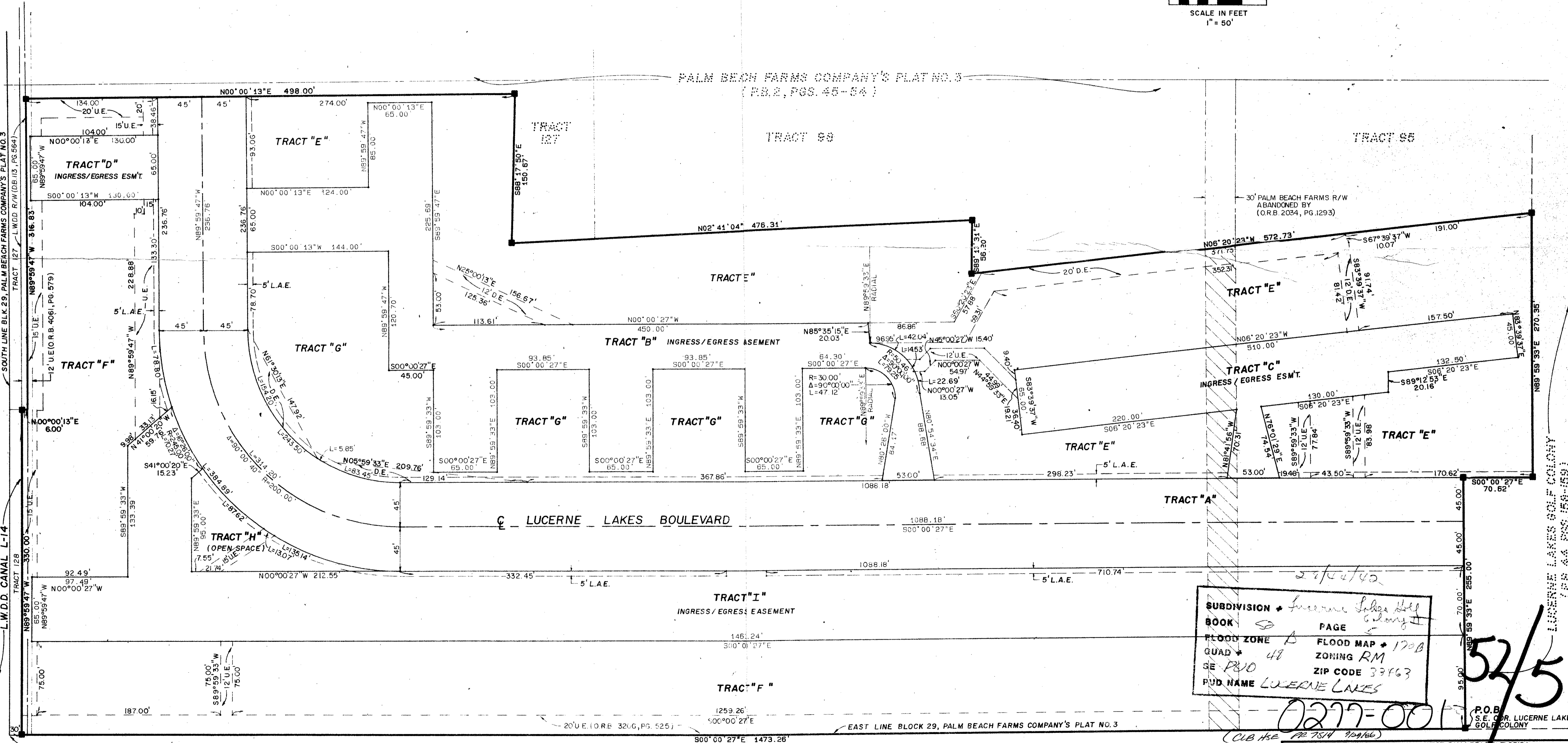
STATE OF FLORIDA
COUNTY OF PALM BEACH
THIS PLAT WAS FILED FOR
RECORD AT _____
THIS _____ DAY OF _____
AD, 1985 AND DULY RECORDED
IN PLAT BOOK _____ ON PAGES
_____ AND _____
JOHN B. DUNKLE, CLERK
BY: _____, D.C.



DRAWING NUMBER

DRAWING NUMBER

DRAWING NUMBER



SUBDIVISION *Lucerne Lakes Golf Colony II*
BOOK *5* PAGE *5*
FLOOD ZONE *A* FLOOD MAP *170B*
QUAD *48* ZONING *RM*
SE *PUD* ZIP CODE *33463*
PUD NAME *LUCERNE LAKES*

0277-001

52/5

S.E. COR. BLOCK 29, PALM BEACH FARMS COMPANY'S PLAT NO. 3 (P.B. 2, PGS. 45-54)

50' PALM BEACH FARMS R/W QUIT CLAIM TO L.W.D.D. (O.R.B. 1997, PG. 788)

L.W.D.D. CANAL E 2 1/2 - E

O.R.B. 1999, PG. 865

Meridian Surveying and Mapping Inc.
WEST PALM BEACH, FLORIDA
DRAWN M.E.H. DATE AUG. 1994
CHECKED SCALE 1" = 50'
DRAWING NO. 84-P-008
LUCERNE LAKES GOLF COLONY II