

DRAWING NUMBER
52/24

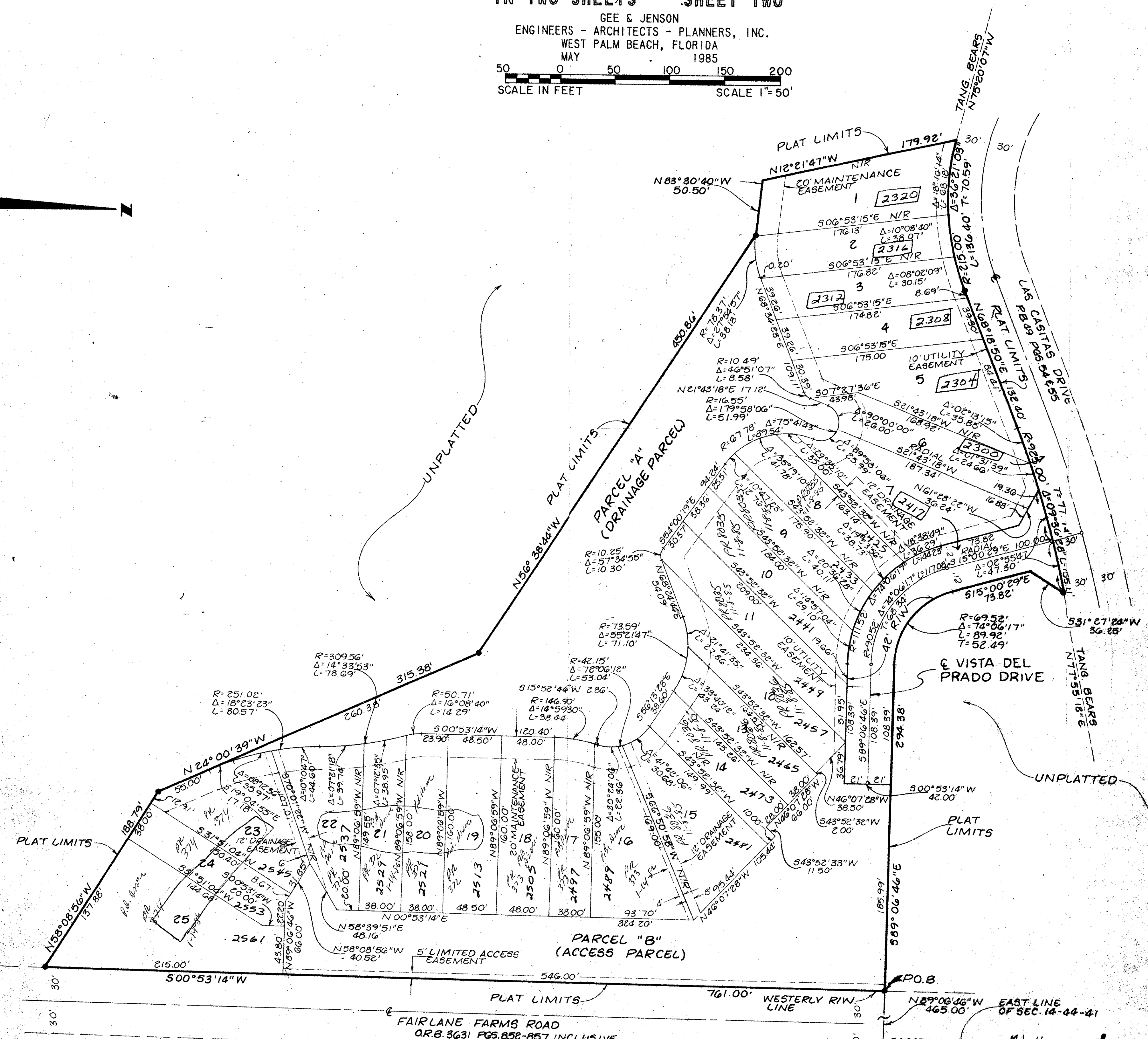
52/24

LAS CASITAS - PLAT NO. 3 PALM BEACH POLO AND COUNTRY CLUB OF WELLINGTON-P.U.D.

IN PART OF SECTION 14, TOWNSHIP 44 SOUTH, RANGE 41 EAST
PALM BEACH COUNTY, FLORIDA
IN TWO SHEETS SHEET TWO

GEE & JENSON
ENGINEERS - ARCHITECTS - PLANNERS, INC.
WEST PALM BEACH, FLORIDA
MAY 1985
SCALE IN FEET SCALE 1"=50'

STATE OF FLORIDA
COUNTY OF PALM BEACH
This plat was filed for
record at _____ M. this _____ day
of _____ 1985, and duly
recorded in Plat Book No. _____
on Pages _____ and _____
JOHN B. DUNKLE
Clerk Circuit Court
By: _____ D.C.



14/44/41
SUBDIVISION Las Casitas 3
BOOK 52 PAGE 24
FLOOD ZONE A01 FLOOD MAP #100B
QUAD # 62 ZONING AR
SE 1/4 PUD ZIP CODE 33411
PUD NAME WELLINGTON

0332-010

52/24

LAS CASITAS #3 P.B. P/10+CC

DRAWING NUMBER

DRAWING NUMBER

DRAWING NUMBER