

52/39

SURVEYOR'S NOTES

- 1. DENOTES PERMANENT REFERENCE MONUMENTS (PRM'S)
2. DENOTES PERMANENT CONTROL POINTS (PCP'S)
3. BEARINGS ARE REFERENCED TO AN ASSUMED BEARING OF N. 00° 57' 28" W. ALONG THE EAST LINES OF TRACTS 35 AND 46, BLOCK 11, PALM BEACH FARMS CO. PLAT NO. 3.
4. BUILDING SETBACK LINES SHALL BE AS REQUIRED BY PALM BEACH COUNTY ZONING REGULATIONS.
5. THERE SHALL BE NO BUILDINGS OR ANY KIND OF CONSTRUCTION OR TREES OR SHRUBS PLACED ON DRAINAGE EASEMENTS OR UTILITY EASEMENTS.
6. ALL LOTS CONTAIN A MINIMUM OF 1.00 ACRE.
7. FOR LOT ACREAGES REFER TO INDIVIDUAL LOTS ON SHEET 3.

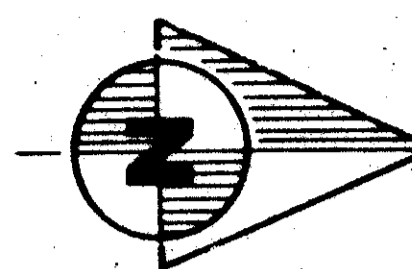
PALERMO ACRES

A PLANNED UNIT DEVELOPMENT

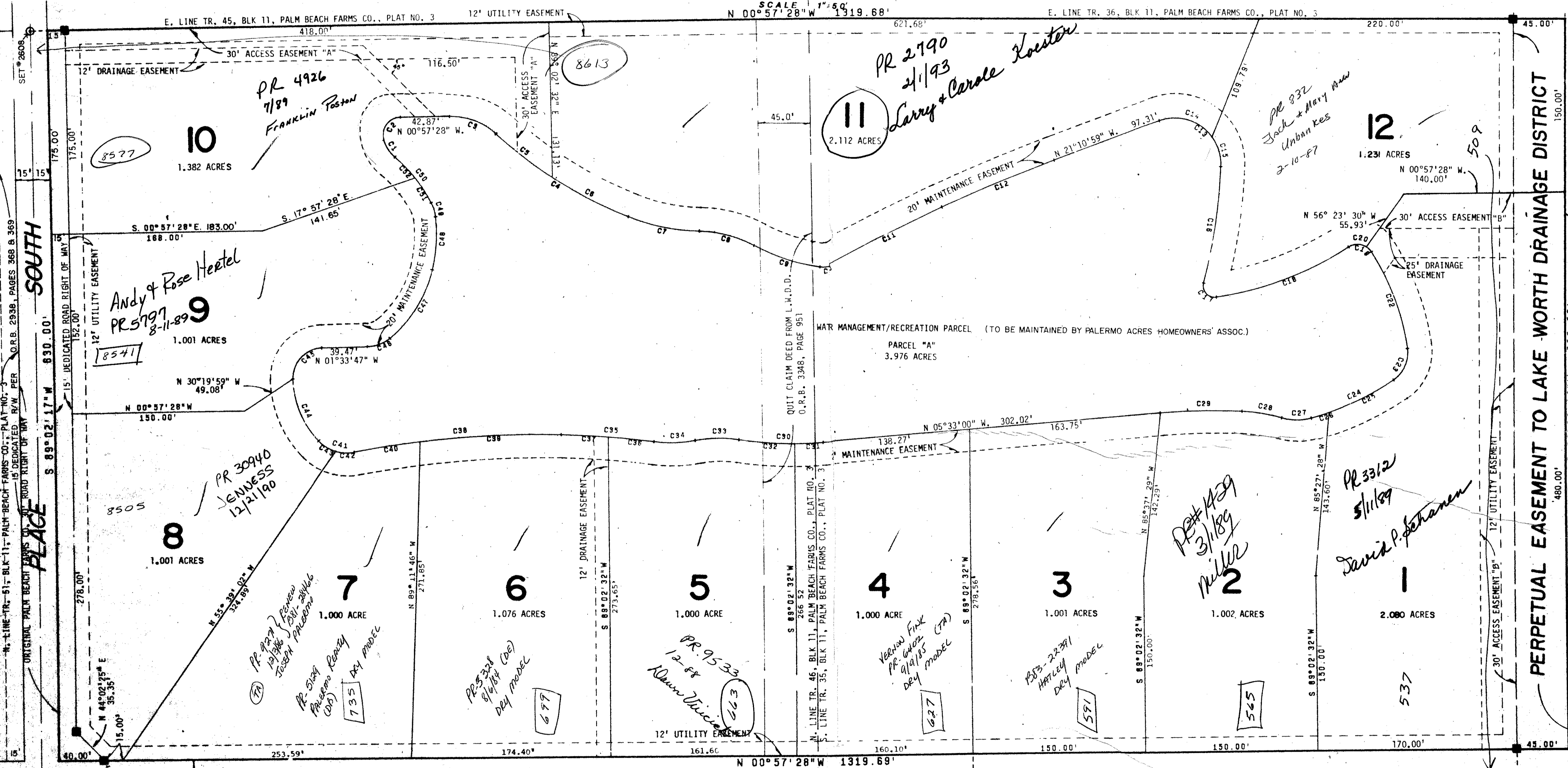
A REPLAT OF A PORTION OF TRACTS 35 AND 46, BLOCK 11, PALM BEACH FARMS CO., PLAT NO. 3, PLAT BOOK 2, PAGE 46, PUBLIC RECORDS OF PALM BEACH COUNTY, FLORIDA PALM BEACH COUNTY, FLORIDA

SHEET 3 OF 3 SHEETS

SEPT., 1985



52



PERPETUAL EASEMENT TO LAKE WORTH DRAINAGE DISTRICT

E MARGINAL ROAD

Table with columns: NO., CH. BRNG., CHORD, RADIUS, DELTA, ARC, TANGENT. It contains curve data for various lots and easements.

SUBDIVISION Palermo Acres
BOOK 32 PAGE 39
FLOOD ZONE B FLOOD MAP 160A
QUAD 32 ZONING RE
SE PUD ZIP CODE 33406
PUD NAME PALERMO ACRES

52/39