

DRAWING NUMBER  
**52/59**

DRAWING NUMBER  
PLAN HOLD CORPORATION • IRVINE, CALIFORNIA  
RECORDED BY NUMBER 07348

DRAWING NUMBER  
PLAN HOLD CORPORATION • IRVINE, CALIFORNIA  
RECORDED BY NUMBER 07348

DRAWING NUMBER  
PLAN HOLD CORPORATION • IRVINE, CALIFORNIA  
RECORDED BY NUMBER 07348

# BRIARRIDGE PLAT ONE

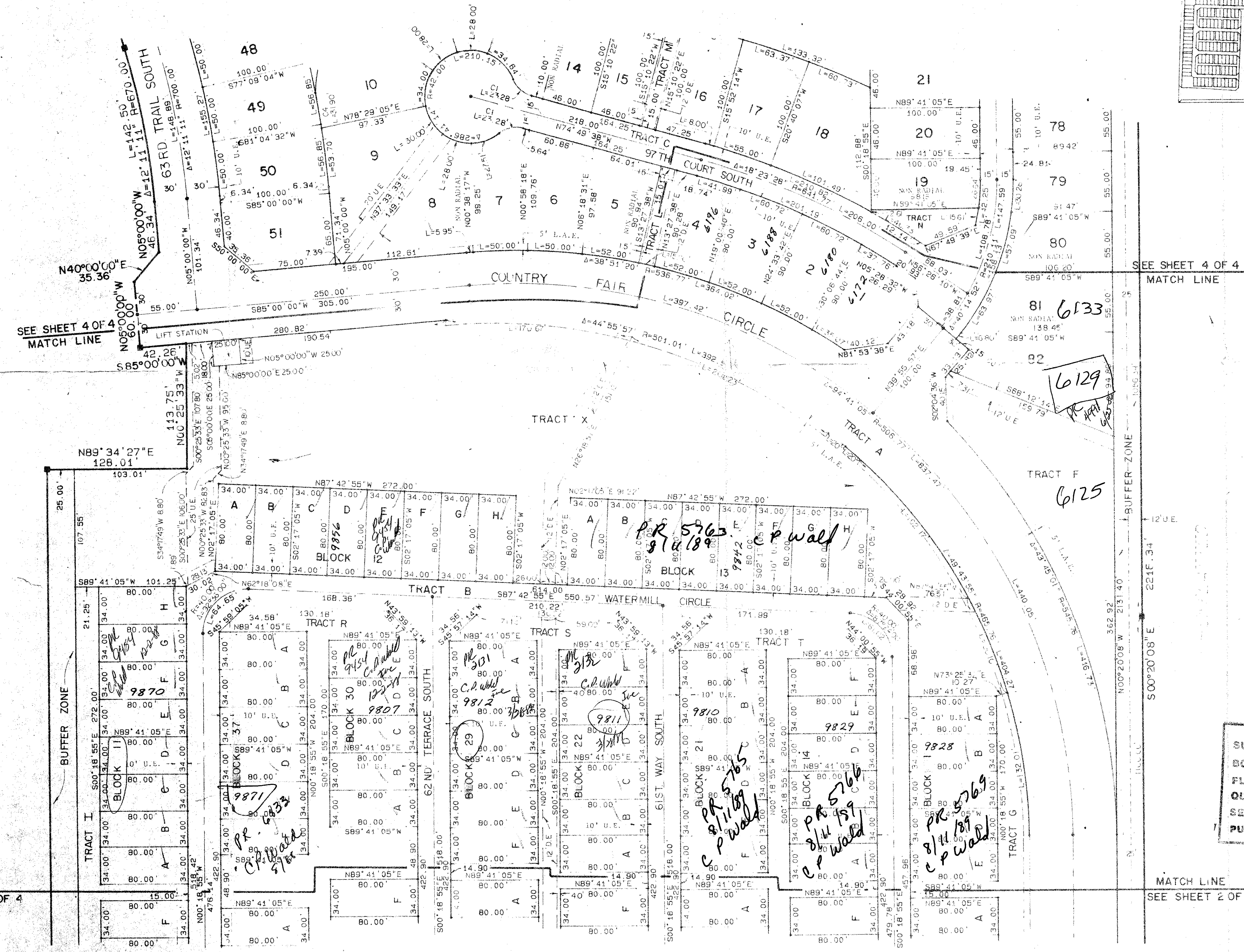
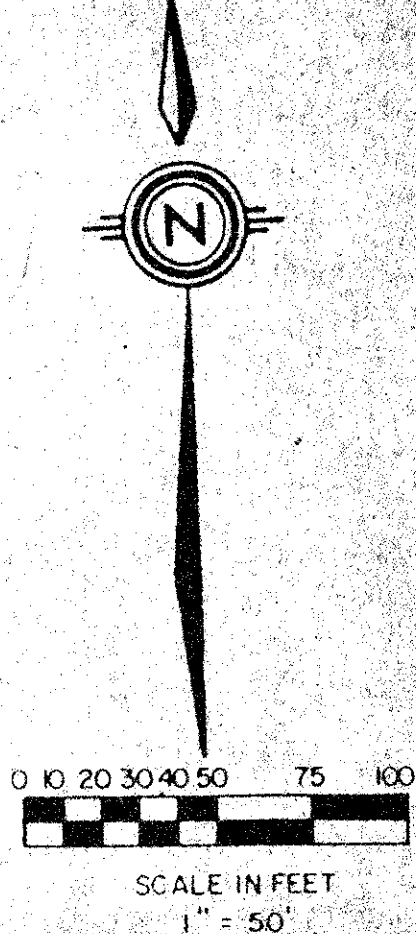
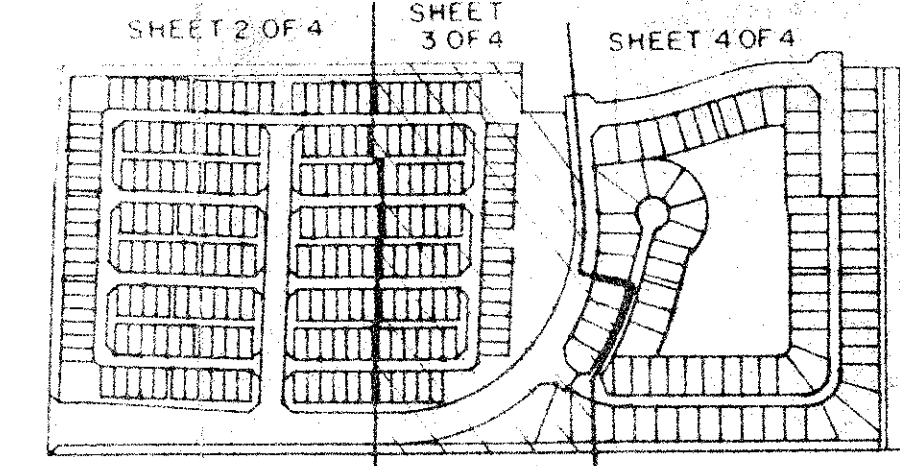
A PART OF LAKES OF BOYNTON BEACH, A P.U.D.  
SITUATE IN SECTION 22, TOWNSHIP 45 SOUTH, RANGE 42 EAST  
PALM BEACH COUNTY, FLORIDA

SEPTEMBER, 1985

SHEET 3 OF 4

52/59

STATE OF FLORIDA  
COUNTY OF PALM BEACH  
THIS PLAT WAS FILED FOR  
RECORD AT  
THIS DAY OF  
AD, 1985 AND DULY RECORDED  
IN PLAT BOOK ON PAGES  
AND  
JOHN B. DUNKLE, CLERK  
BY: D.C.



NO.	DELTA	RADIUS	LENGTH
C1	53°20'37"	25.00'	23.28'
C2	32°03'50"	35.00'	19.59'
C3	5°23'18"	142.00'	13.35'
C4	2°12'06"	830.00'	31.90'
C5	37°07'03"	30.00'	19.43'
C6	52°43'46"	30.00'	27.61'

SUBDIVISION = Briarridge 1  
 BOOK 52 PAGE 59  
 FLOOD ZONE B FLOOD MAP #185A  
 QUAD # 35 ZONING RS  
 SEE PUD ZIP CODE  
 PUD NAME IRVING SPRING

**52/59**

Meridian Surveying and mapping inc.  
WEST PALM BEACH, FLORIDA

DRAWN: MHC/MR	DATE: APRIL 1985
CHECKED: WBH	SCALE: 1" = 50'
DRAWING NO:	84-PI-105

**BRIARRIDGE PLAT ONE**  
PART OF LAKES OF BOYNTON BEACH, P.U.D.

*See attached memo*

*32/45/42*  
*9/11/85*  
*0391-003*