

DRAWING NUMBER
52/76

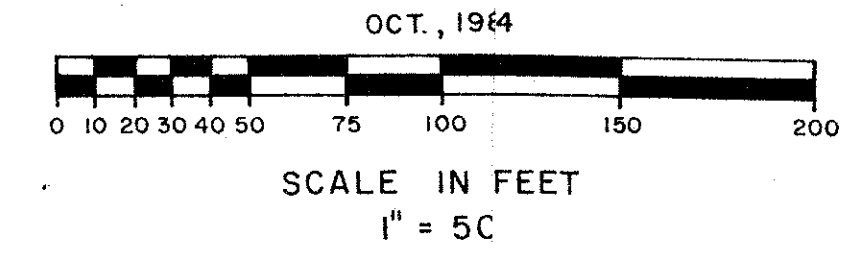
76

NOTES

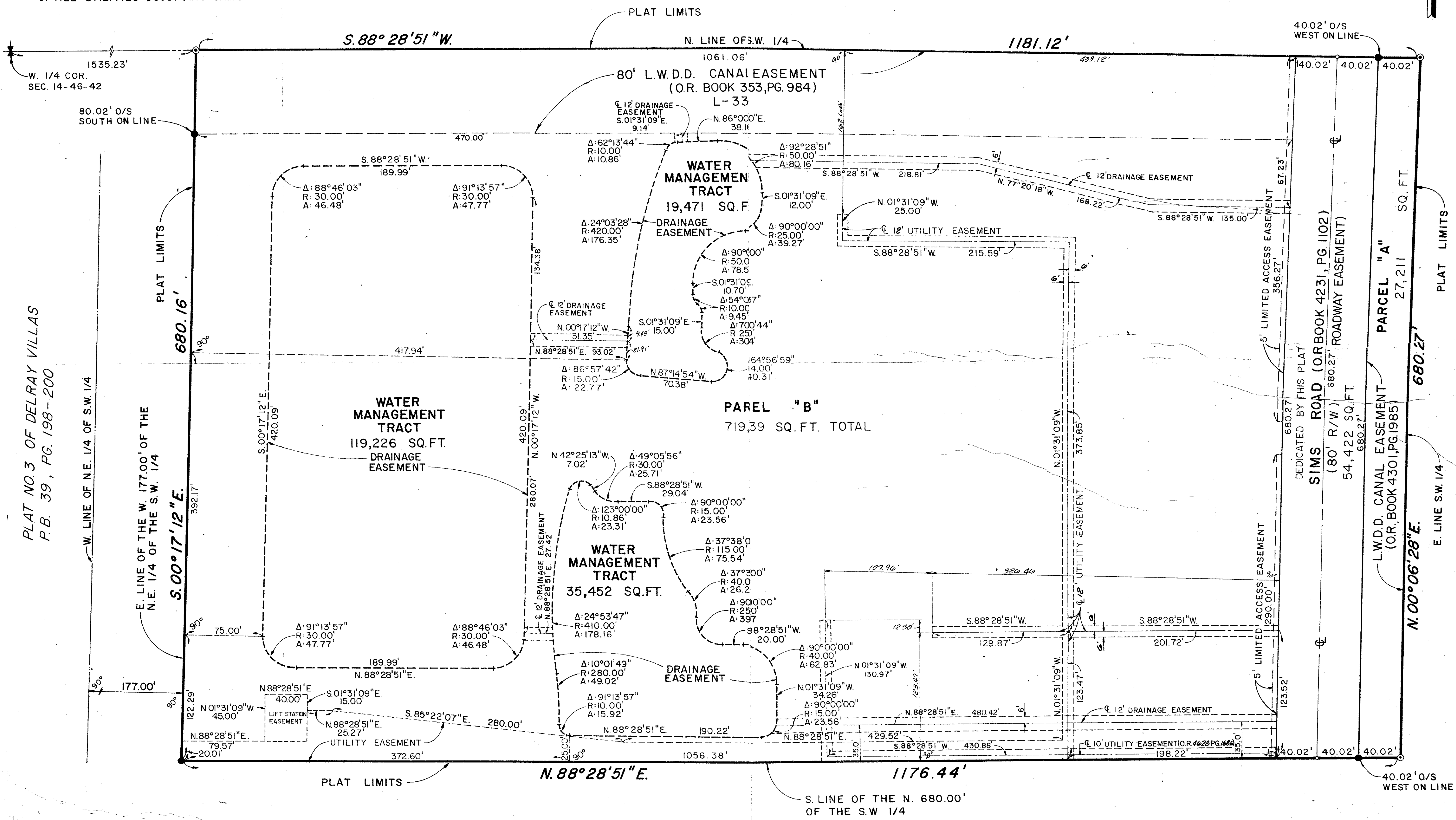
1. BEARINGS ARE BASED ON THE NORTH LINE (BEING S.88°28'51"W.) OF THE OF "PLAT NO. 3 OF DELRAY VILLAS" AS RECORDED IN PLAT BOOK 39, PAGES 198-200, OF THE PUBLIC RECORDS OF PALM BEACH COUNTY, FLORIDA.
2. BUILDING SETBACK LINES SHALL BE AS REQUIRED BY THE ORDINANCES OF PALM BEACH COUNTY, FLORIDA.
3. NO BUILDING OR ANY KIND OF CONSTRUCTION SHALL BE PLACED ON UTILITY OR DRAINAGE EASEMENTS.
4. NO STRUCTURES, TREES OR SHRUBS SHALL BE PLACED ON DRAINAGE EASEMENTS.
5. APPROVAL OF LANDSCAPING ON UTILITY EASEMENTS OTHER THAN WATER OR SEWER SHALL BE ONLY WITH THE APPROVAL OF ALL UTILITIES OCCUPYING SAME.

(P.R.D.)
HERITAGE PARK

A PORTION OF THE NORTHEAST ONE-QUARTER (N.E.1/4) OF THE
 SOUTHWEST ONE-QUARTER (S.W.1/4) OF SECTION 14, TOWNSHIP 46
 SOUTH, RANGE 42 EAST, PALM BEACH COUNTY, FLORIDA.



SHEET 2 OF 2



NOT PLATTED

PLAT LIMITS

PLAT LIMITS

NOT PLATTED

LEGEND

- INDICATES PERMANENT REFERENCE MONUMENTS (P.R.M.)
- INDICATES PERMANENT CONTROL POINT (P.C.P.)

THIS INSTRUMENT PREPARED BY
 LARRY BIRMINGHAM
DANIEL CARNAHAN
 CONSULTING ENGINEERS, INC.
 6191 W. ATLANTIC BLVD., MARGATE, FLA.
 OCT., 1984 8402031 RCW

52/76
 0438-001
HERITAGE PARK

DRAWING NUMBER

DRAWING NUMBER

DRAWING NUMBER

PLAN HOLD CORPORATION • IRVINE, CALIFORNIA
 REPRODUCED BY NUMBER 07548

PLAT NO. 3 OF DELRAY VILLAS
 P.B. 39, PG. 198-200

HIGH POINT PLAT NO. 2
 P.B. 40, PG. 115