

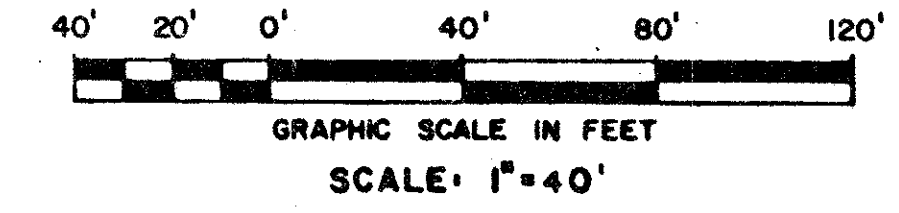
DRAWING NUMBER  
52/81

# PLAT OF PALM HARBOR

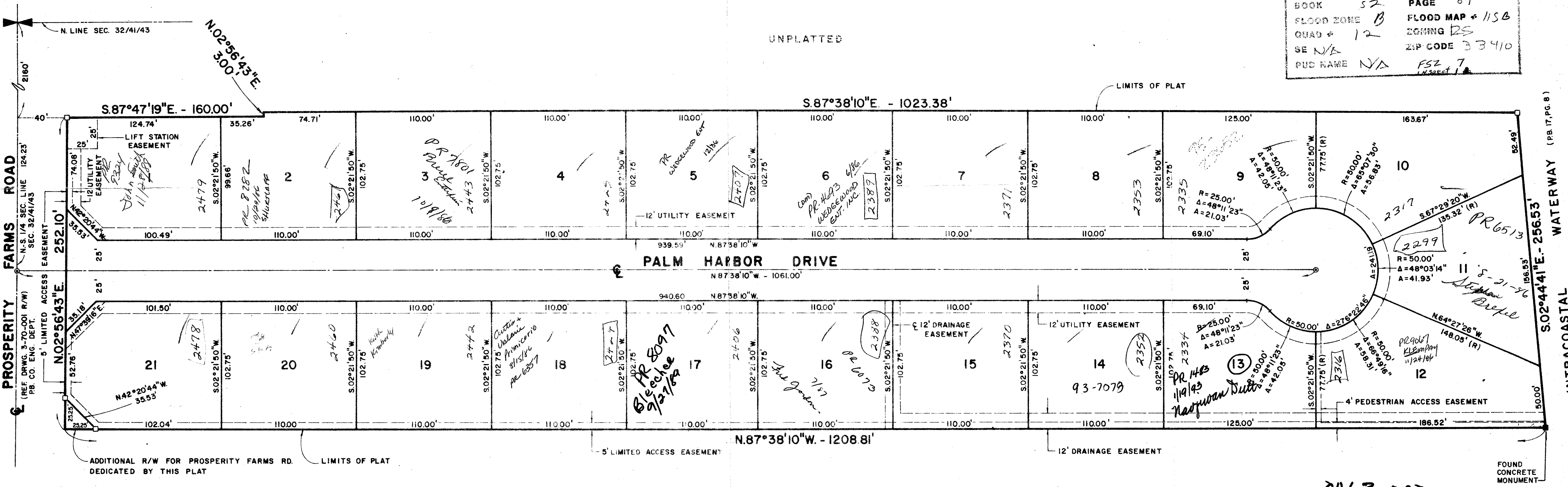
52/81

- NOTES:
- NO BUILDINGS OR ANY KIND OF CONSTRUCTION SHALL BE PLACED ON UTILITY OR DRAINAGE EASEMENTS.
  - BEARINGS SHOWN HEREON ARE BASED ON THE MAP OF THE INTRACOASTAL WATERWAY AS RECORDED IN PLAT BOOK 17, PAGE 8, PUBLIC RECORDS OF PALM BEACH COUNTY, FLORIDA.
  - = DENOTES PERMANENT CONTROL POINT (P.C.P.)
  - = DENOTES PERMANENT REFERENCE MONUMENT (P.R.M.)
  - (R.) = DENOTES RADIAL LINE
  - (N.R.) = DENOTES NON-RADIAL LINE
  - U.E. = DENOTES UTILITY EASEMENT
  - L.A.E. = DENOTES LIMITED ACCESS EASEMENT
  - D.E. = DENOTES DRAINAGE EASEMENT
  - WHERE UTILITY AND DRAINAGE EASEMENTS INTERSECT THE DRAINAGE EASEMENT SHALL TAKE PRECEDENCE.
  - NO STRUCTURES, TREES OR SHRUBS SHALL BE PLACED ON DRAINAGE EASEMENTS.
  - APPROVAL OF LANDSCAPING ON UTILITY EASEMENTS SHALL BE ONLY WITH THE APPROVAL OF ALL UTILITIES OCCUPYING SAME.

A PLAT OF A PORTION OF SECTION 32,  
TOWNSHIP 41 SOUTH, RANGE 43 EAST,  
PALM BEACH COUNTY, FLORIDA.  
MARCH, 1985



32/41/43  
SUBDIVISION \* Palm Harbor  
BOOK 52 PAGE 81  
FLOOD ZONE B FLOOD MAP \* 115B  
QUAD \* 12 ZONING DP5  
SE N/A ZIP CODE 33410  
PUD NAME N/A FSZ 7



0463-000

THIS INSTRUMENT PREPARED BY:  
DENNIS J. MEIERER  
WILLIAM G. WALLACE, INC.  
CONSULTING ENGINEERS AND LAND SURVEYORS  
9176 ALTERNATE A1A  
LAKE PARK, FLORIDA 33410

PLAT 52/81		
PALM HARBOR		
WILLIAM G. WALLACE, INC. CONSULTING ENGINEERS, LAND PLANNERS & SURVEYORS 9176 ALTERNATE A1A LAKE PARK, FL 33410 • 305-940-4231		
F. G.	JOB NO: 85-181	F.S./27 PG. 38
OFFICE: R. R.	DATE: MARCH, 1985	DWG. NO: 85-181
CKD:	REF: 79-667	SHEET 2 OF 2

# PALM HARBOR

DRAWING NUMBER

DRAWING NUMBER

DRAWING NUMBER

PLAN HOLD CORPORATION • IRVINE, CALIFORNIA  
RECORD BY NUMBER 07548

PLAN HOLD CORPORATION • IRVINE, CALIFORNIA  
RECORD BY NUMBER 07548

PLAN HOLD CORPORATION • IRVINE, CALIFORNIA  
RECORD BY NUMBER 07548

PLAN HOLD CORPORATION • IRVINE, CALIFORNIA  
RECORD BY NUMBER 07548