

52/127

127

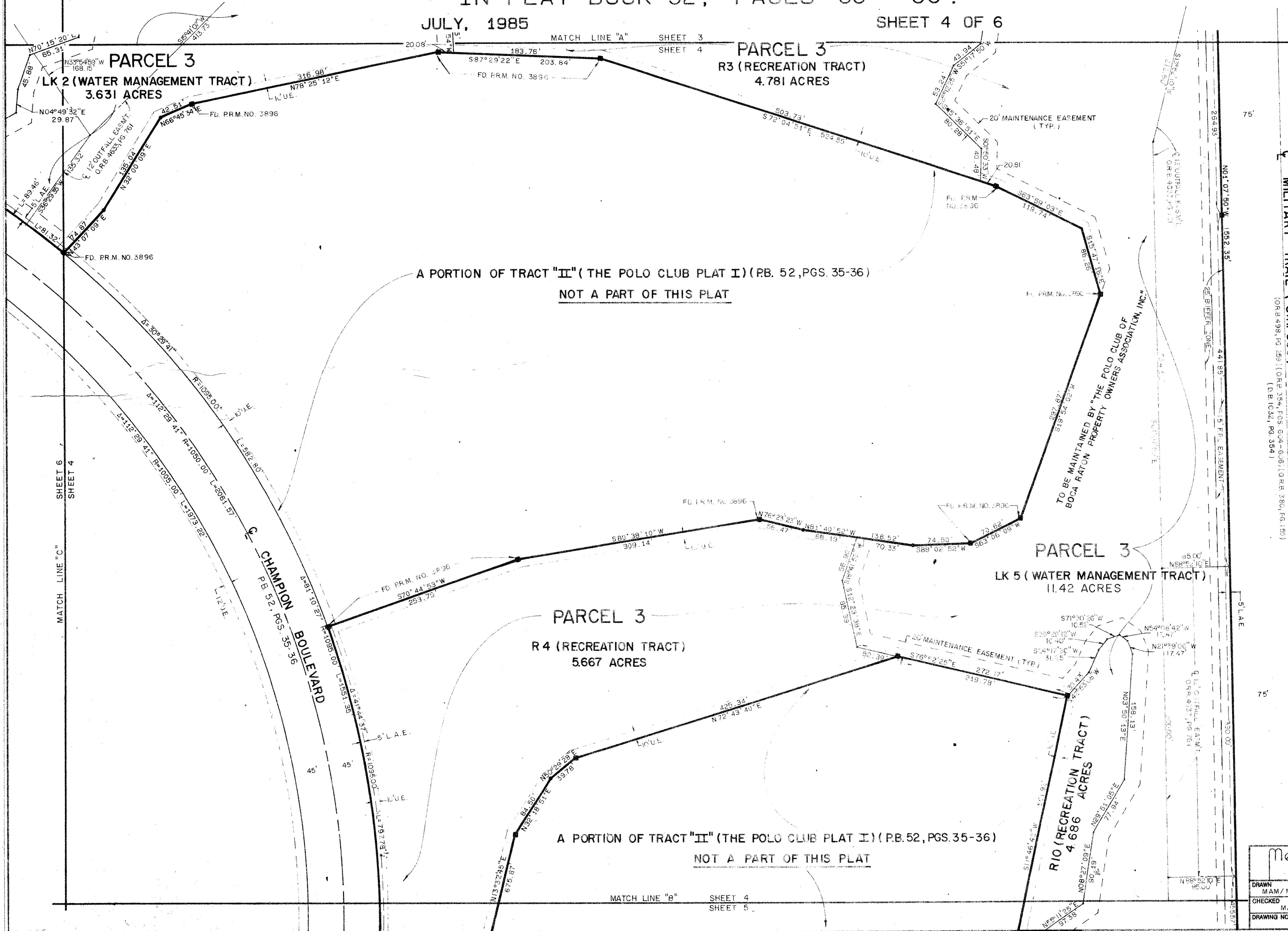
THE POLO CLUB OPEN SPACE PLAT ONE

SITUATE IN SECTION 35, TOWNSHIP 46 SOUTH, RANGE 42 EAST
PALM BEACH COUNTY, FLORIDA.

BEING A REPLAT OF A PORTION OF "THE POLO CLUB PLAT I", A P.U.D., AS RECORDED
IN PLAT BOOK 52, PAGES 35 - 36.

JULY, 1985

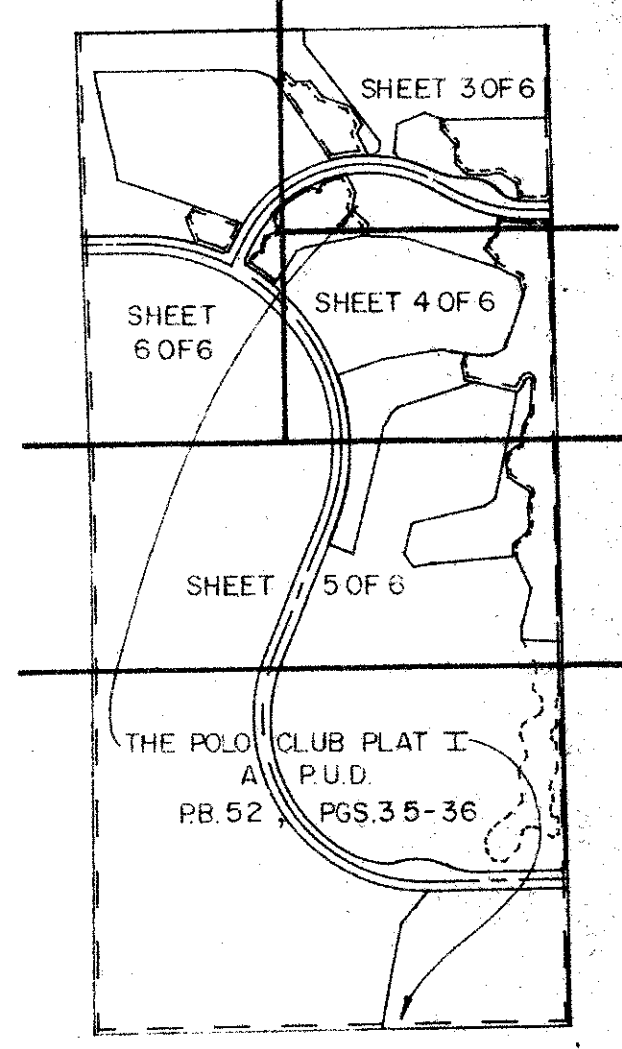
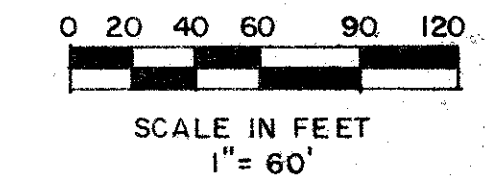
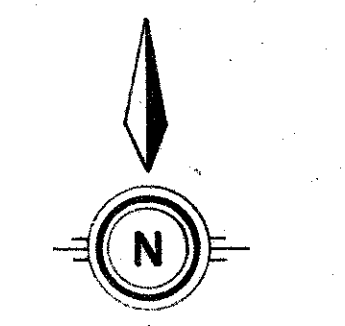
SHEET 4 OF 6



STATE OF FLORIDA
COUNTY OF PALM BEACH

THIS PLAT WAS FILED FOR
RECORD
THIS _____ DAY OF _____
AD, 1985 AND DULY RECORDED
IN PLAT BOOK _____ ON PAGES
_____ AND _____

JOHN B. DUNKLE, CLERK
BY: _____, D.C.



52/127

0436-303

Meridian
Surveying and mapping, inc.

2328 SO. CONGRESS AVE.
WEST PALM BEACH, FL.

DRAWN MAM / MEH	DATE JULY, 1985
CHECKED MAM	SCALE 1" = 60'
DRAWING NO. 85-P-058	THE POLO CLUB OPEN SPACE PLAT ONE

DRAWING NUMBER

DRAWING NUMBER

DRAWING NUMBER

PLAN HOLD CORPORATION • IRVINE, CALIFORNIA
RECORDED BY NUMBER 07348

PLAN HOLD CORPORATION • IRVINE, CALIFORNIA
RECORDED BY NUMBER 07348