

DRAWING NUMBER  
**52/134**

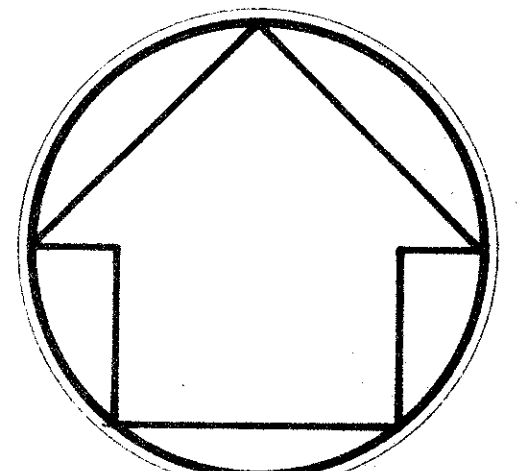
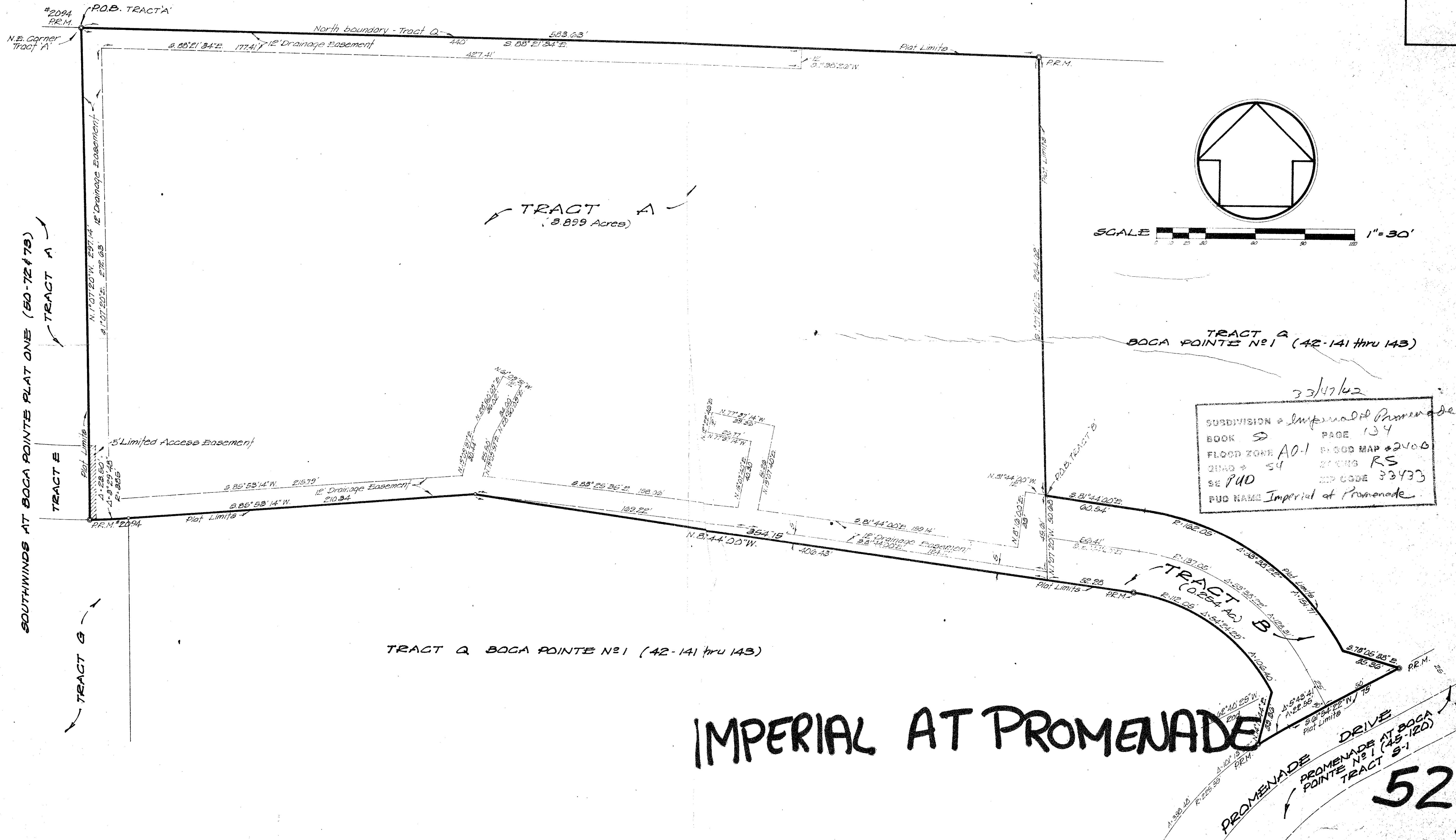
# IMPERIAL AT PROMENADE

134

A REPLAT OF A PORTION OF TRACT Q, BOCA POINTE NO. 1 PUD, 42-141 thru 143, PUBLIC RECORDS OF PALM BEACH COUNTY, FLORIDA, LYING IN SECTION 33, TOWNSHIP 47 SOUTH, RANGE 42 EAST.

891060 - P.R.M.s - 10-8-87

TRACT X-10 BOCA POINTE NO. 1 (42-141)



SCALE 1" = 30'

33/47/62

|                                     |                 |
|-------------------------------------|-----------------|
| SUBDIVISION - Imperial at Promenade |                 |
| BOOK 5                              | PAGE 134        |
| FLOOD ZONE A0-1                     | F-500 MAP #2400 |
| QUAD # 54                           | SECTION RS      |
| SE PUD                              | MAP CODE 33433  |
| PUD NAME Imperial at Promenade      |                 |

# IMPERIAL AT PROMENADE

**52/134**

0211-322

Prepared by:  
**FORTIN, LEAVY, SKILES, INC.**  
 LAND SURVEYORS AND ENGINEERS  
 855 S. Federal Highway, Boca Raton, Fla. 33432

Sheet 2 of 2

DRAWING NUMBER

DRAWING NUMBER

DRAWING NUMBER

DRAWING NUMBER  
**52/134**