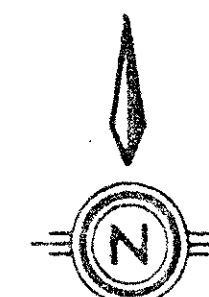


52/136

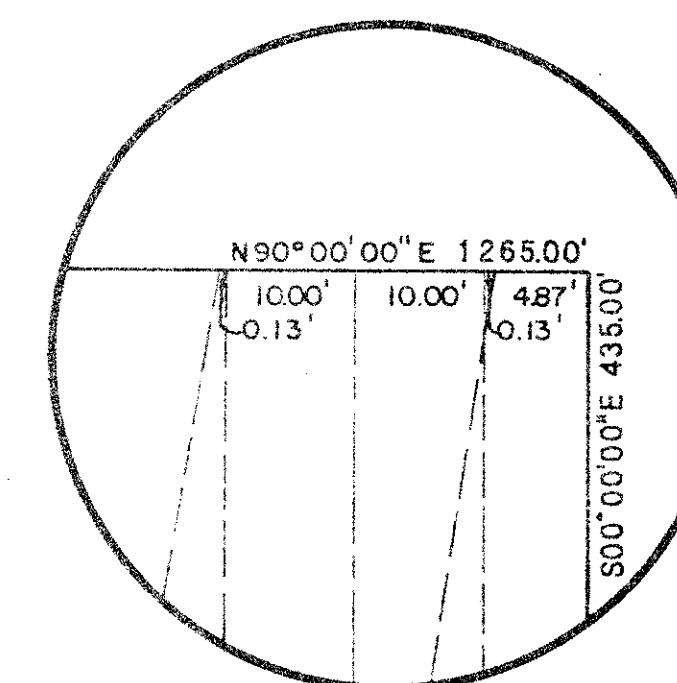
WHISPER WALK SECTION B PLAT NO.1 (PART OF A P.U.D.) SITUATE IN SECTION 5, TOWNSHIP 47 SOUTH, RANGE 42 EAST, PALM BEACH COUNTY, FLORIDA, BEING A REPLAT OF A PORTION OF TRACT A OF THE BOUNDARY PLAT OF WHISPER WALK (P.B.43, P.189-191) SHEET 2 OF 2

136

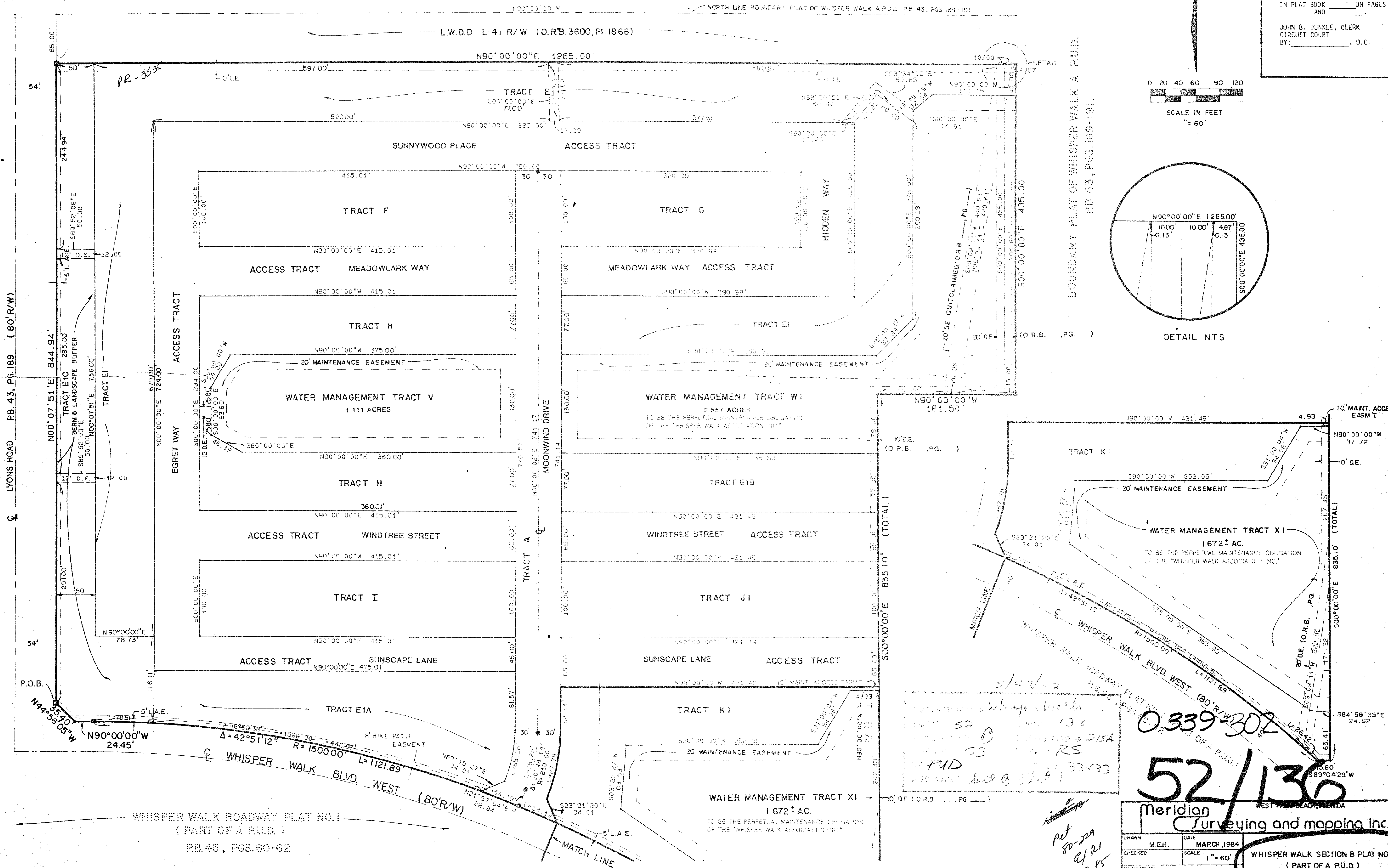
STATE OF FLORIDA
COUNTY OF PALM BEACH
THIS PLAT WAS FILED FOR
RECORD AT _____ DAY OF _____
AD, 1986 AND DULY RECORDED
IN PLAT BOOK _____ ON PAGES
_____ AND _____
JOHN B. DUNKLE, CLERK
CIRCUIT COURT
BY: _____, D.C.



0 20 40 60 80 120
SCALE IN FEET
1" = 60'



DETAIL N.T.S.



Handwritten notes:
5/47/42
Whisper Walks
S2 130
S3 130
PUD 33433
11-27-85

0339-2302
52/136
Meridian
Surveying and mapping inc.
WEST PALM BEACH, FLORIDA

DRAWN	M.E.H.	DATE	MARCH, 1984
CHECKED		SCALE	1" = 60'
DRAWING NO.			83-P-130

WHISPER WALK SECTION B PLAT NO.1
(PART OF A P.U.D.)

DRAWING NUMBER

DRAWING NUMBER

DRAWING NUMBER

PLAN HOLD CORPORATION • IRVINE, CALIFORNIA
RECORD BY NUMBER 02546

LYONS ROAD PB. 43, P. 189 (80' R/W)

WHISPER WALK ROADWAY PLAT NO.1
(PART OF A P.U.D.)
PB. 45, PGS. 80-82

WATER MANAGEMENT TRACT XI
1.672 AC.
TO BE THE PERPETUAL MAINTENANCE OBLIGATION
OF THE "WHISPER WALK ASSOCIATION INC."

WATER MANAGEMENT TRACT XI
1.672 AC.
TO BE THE PERPETUAL MAINTENANCE OBLIGATION
OF THE "WHISPER WALK ASSOCIATION INC."

WATER MANAGEMENT TRACT WI
2.557 ACRES
TO BE THE PERPETUAL MAINTENANCE OBLIGATION
OF THE "WHISPER WALK ASSOCIATION INC."

WATER MANAGEMENT TRACT V
1.111 ACRES

WATER MANAGEMENT TRACT XI
1.672 AC.
TO BE THE PERPETUAL MAINTENANCE OBLIGATION
OF THE "WHISPER WALK ASSOCIATION INC."