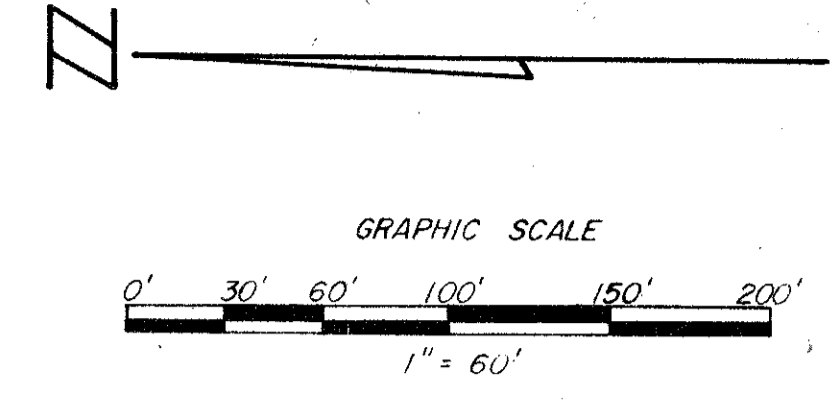


52/138

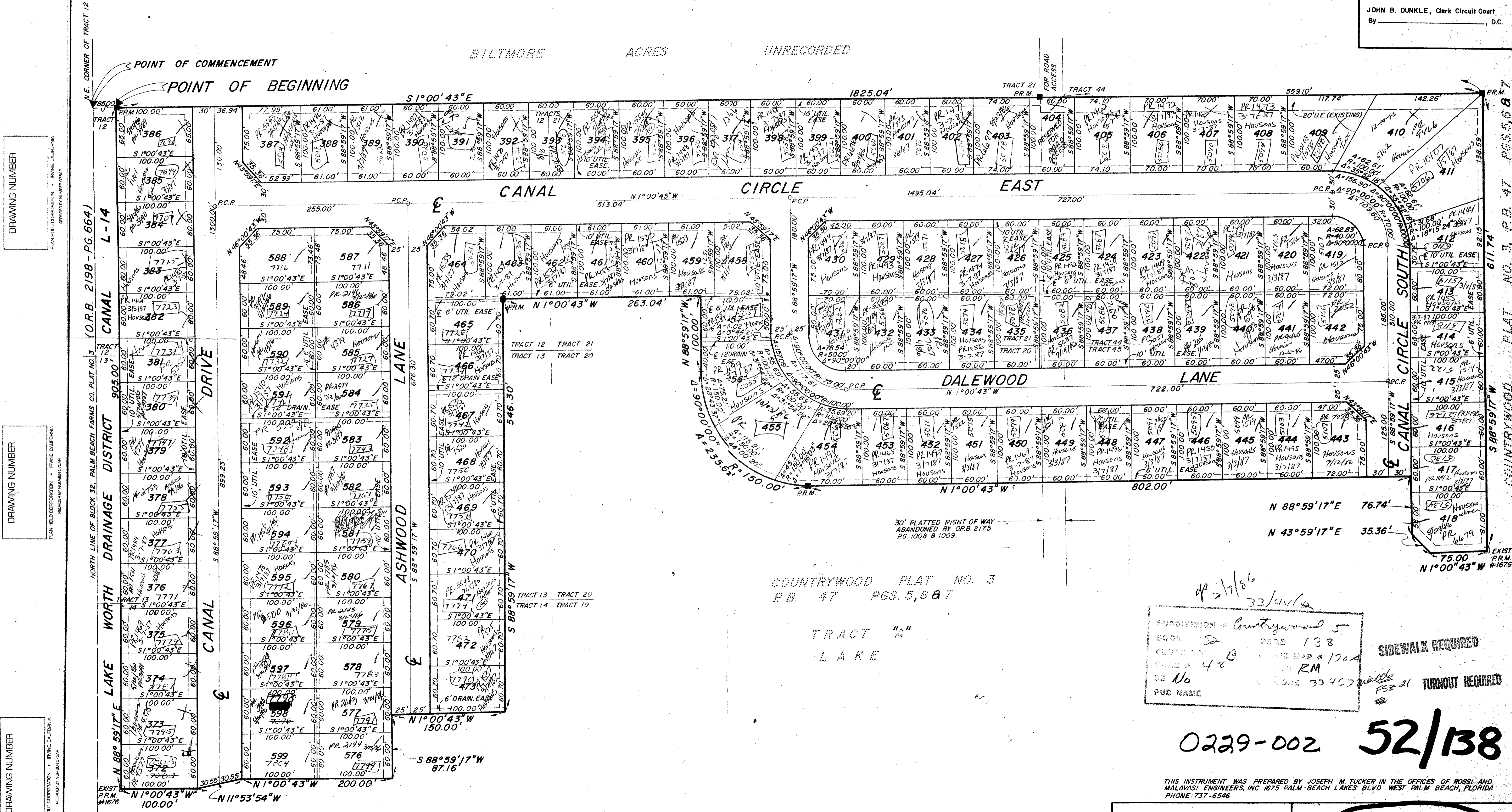
138

COUNTRYWOOD PLAT NO. 5

BEING A REPLAT OF A PORTION OF BLOCK 32 OF PALM BEACH FARMS CO., PLAT NO. 3,
 P.B. 2 PGS. 45 THRU 54
 IN SECTION 33, TOWNSHIP 44 SOUTH, RANGE 42 EAST
 PALM BEACH COUNTY, FLORIDA
 SHEET 2 OF 2 SHEETS - JANUARY 1986



STATE OF FLORIDA
 COUNTY OF PALM BEACH }
 This Plat was filed for record at _____ M.
 this _____ day of _____
 19 _____, and duly recorded in Plat Book No. _____
 on page _____
 JOHN B. DUNKLE, Clerk Circuit Court
 By _____, D.C.



DRAWING NUMBER

DRAWING NUMBER

DRAWING NUMBER

COUNTRYWOOD PLAT NO. 3
 P.B. 47 PGS. 5, 8 & 7

TRACT "A"
 LAKE

SUBDIVISION - Countrywood 5
 BOOK 52 PAGE 138
 PLAT NO. 48 FOR MAP # 170-A
 RE No RM
 PUD NAME - COBE 33467

SIDEWALK REQUIRED
 TURNOUT REQUIRED

0229-002 52/138

ROSSI & MALAVASI
 ENGINEERS, INC.

COUNTRYWOOD
 PLAT NO. 5

THIS INSTRUMENT WAS PREPARED BY JOSEPH M. TUCKER IN THE OFFICES OF ROSSI AND MALAVASI ENGINEERS, INC. 1675 PALM BEACH LAKES BLVD. WEST PALM BEACH, FLORIDA
 PHONE: 737-6546