

DRAWING NUMBER
52/185

ASCOT

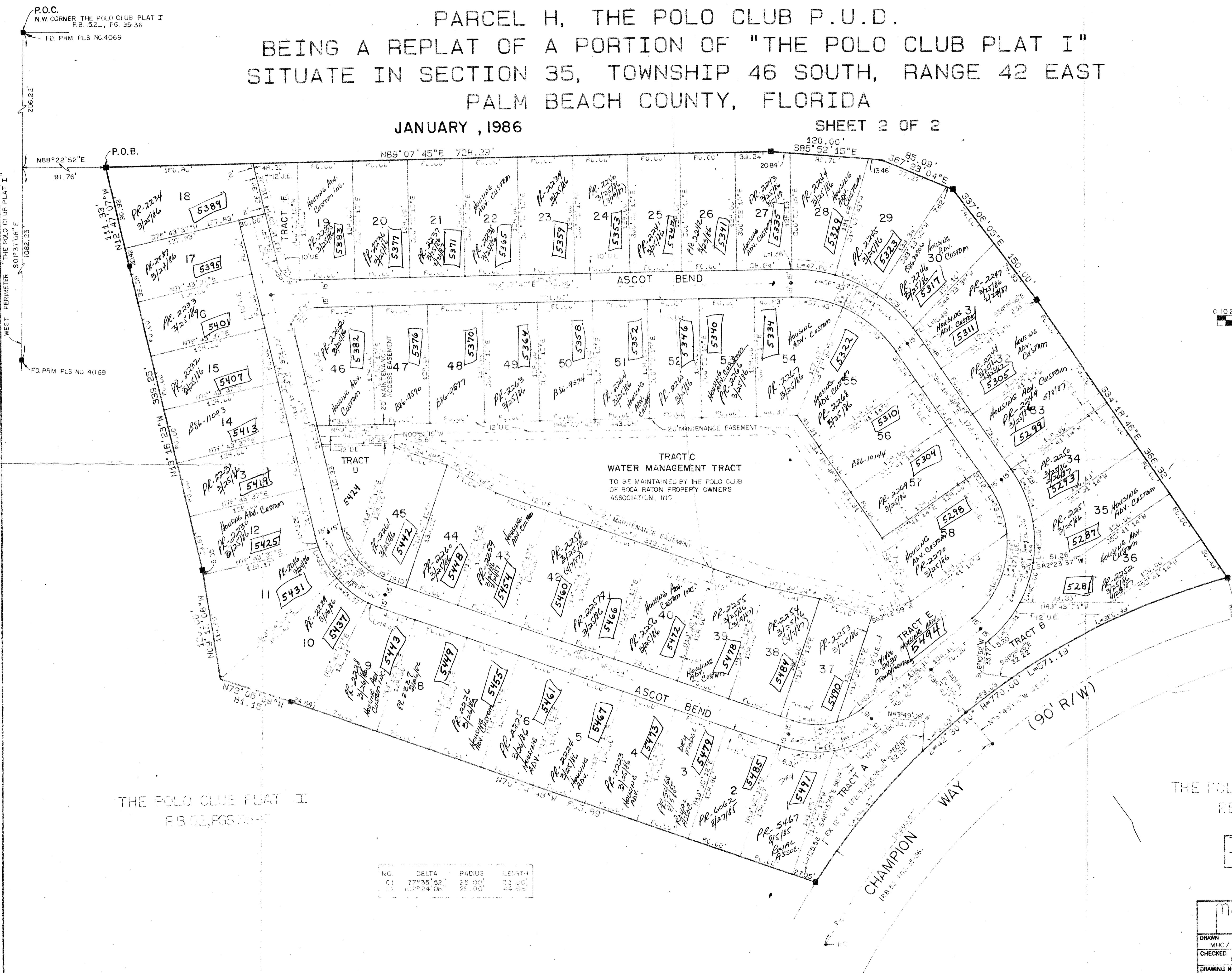
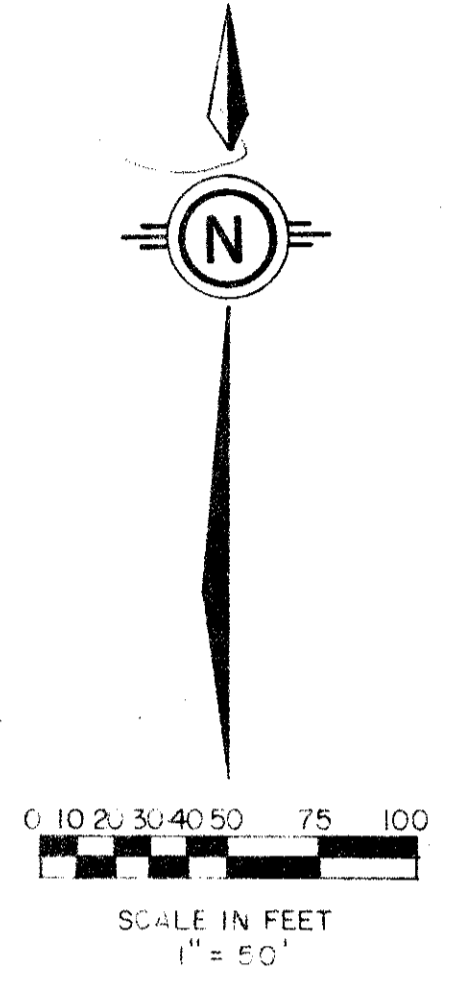
PARCEL H, THE POLO CLUB P.U.D.
BEING A REPLAT OF A PORTION OF "THE POLO CLUB PLAT I"
SITUATE IN SECTION 35, TOWNSHIP 46 SOUTH, RANGE 42 EAST
PALM BEACH COUNTY, FLORIDA

JANUARY, 1986

SHEET 2 OF 2

185

STATE OF FLORIDA
COUNTY OF PALM BEACH
THIS PLAT WAS FILED FOR
RECORD AT _____ DAY OF _____
AD, 1986 AND DULY RECORDED
IN PLAT BOOK _____ ON PAGES
_____ AND _____
JOHN B. DUNKLE, CLERK
BY: _____, D.C.



DRAWING NUMBER

DRAWING NUMBER

DRAWING NUMBER

35/46/42
SUBDIVISION + Ascot
BOOK 02 PAGE 185
FLOOD ZONE B FLOOD MAP #2209
QUAD # 37 ZONING
SE ZIP CODE 33481
PUD NAME

THE POLO CLUB PLAT II
P.B. 52, PGS. 35-36

CHECKED BY
ADP. BY

0436-028

Meridian Surveying and mapping inc. WEST PALM BEACH, FLORIDA

DRAWN MJC/MBH	DATE 10/9/85	ASCOT
CHECKED MAM	SCALE 1" = 50'	PARCEL H
DRAWING NO 85-P-030		THE POLO CLUB P.U.D.

NO	DELTA	RADIUS	LENGTH
1	77°35'52"	25.00'	28.00'
2	102°24'06"	25.00'	44.00'

35/46/42
R5/PUD
Pet. 84-71
Yvonne dice