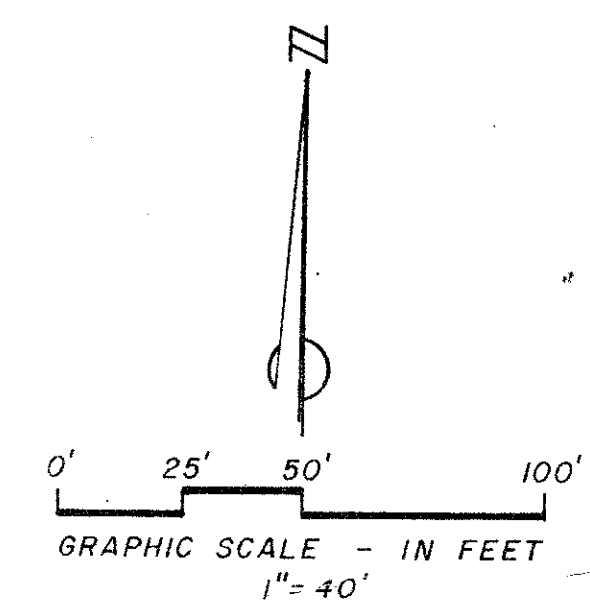
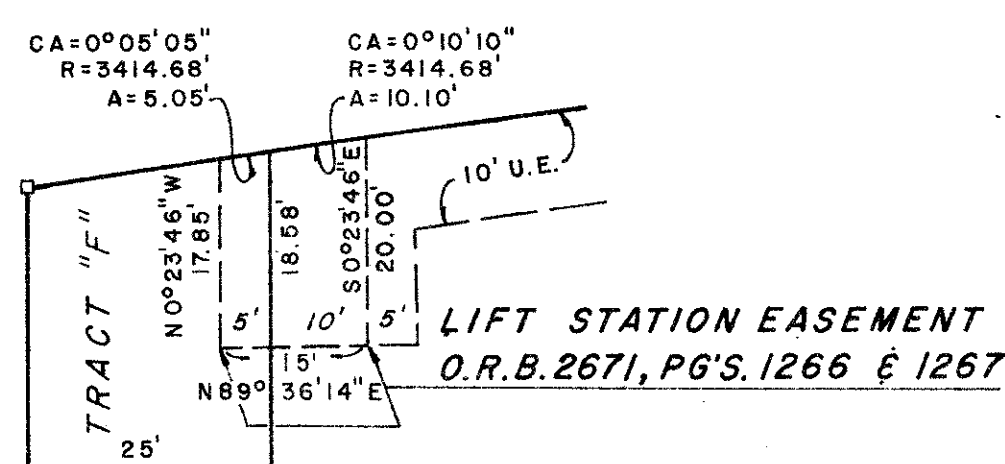


DRAWING NUMBER  
**52/190**

# CASA DEL REY (P.U.D.) PLAT NO. 2

**190**

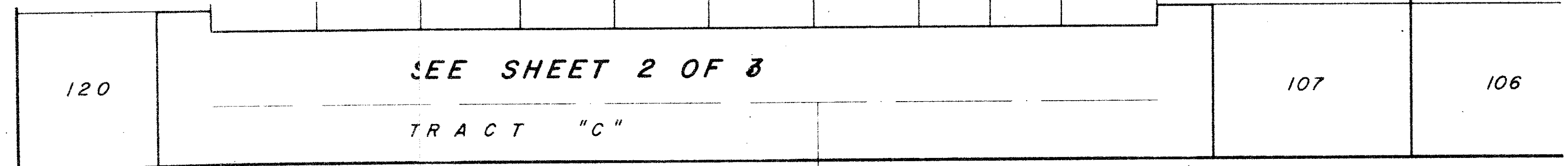
SHEET 3 OF 3  
NOVEMBER 1985



EAST 1/4 CORNER  
SECTION 11, T.46 S., R. 42 E.  
(POINT OF COMMENCEMENT)

STATE OF FLORIDA  
COUNTY OF PALM BEACH SS:  
This Plat was filed for record at \_\_\_\_\_  
M. this \_\_\_\_\_ day of \_\_\_\_\_ 19\_\_\_\_  
and duly recorded in Plat Book \_\_\_\_\_  
on Page \_\_\_\_\_  
John B. Dunkle, Clerk Circuit Court  
By \_\_\_\_\_ D.C.

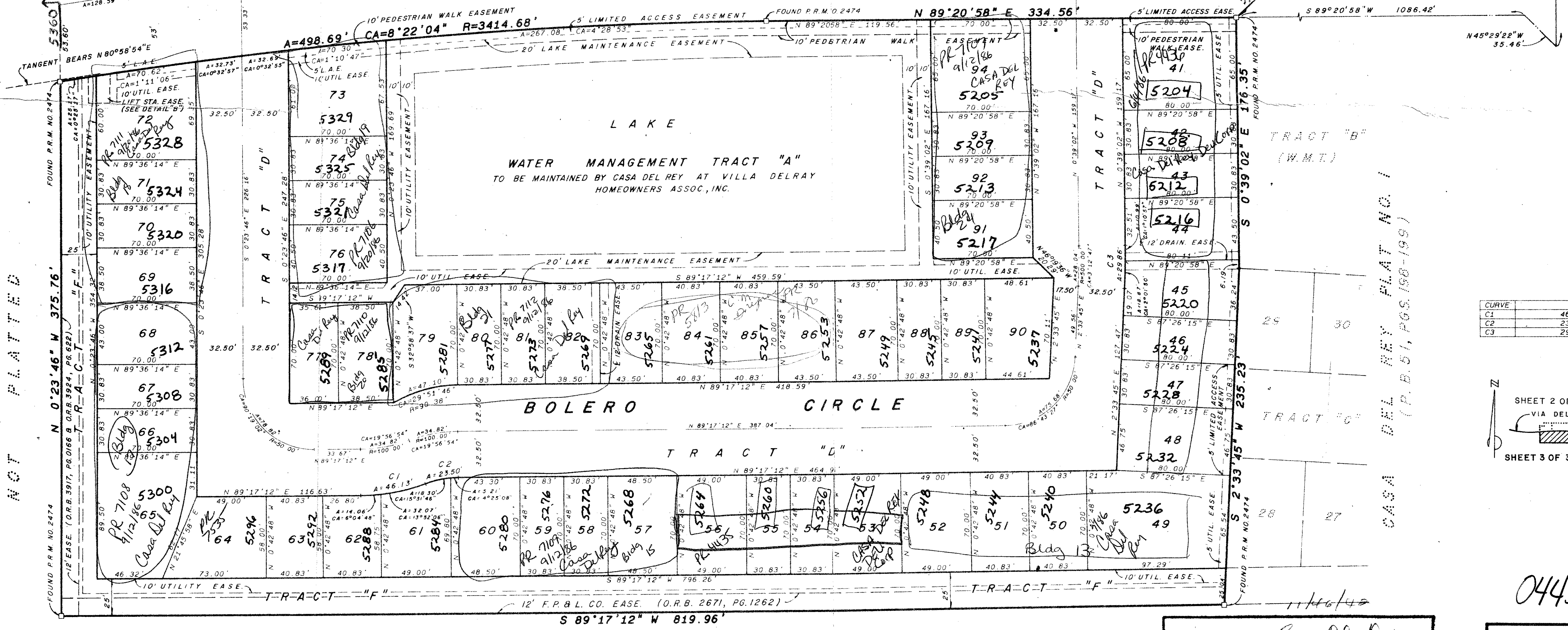
CASA DEL REY PLAT NO. 1  
(P.B. 51, PGS. 198-199)



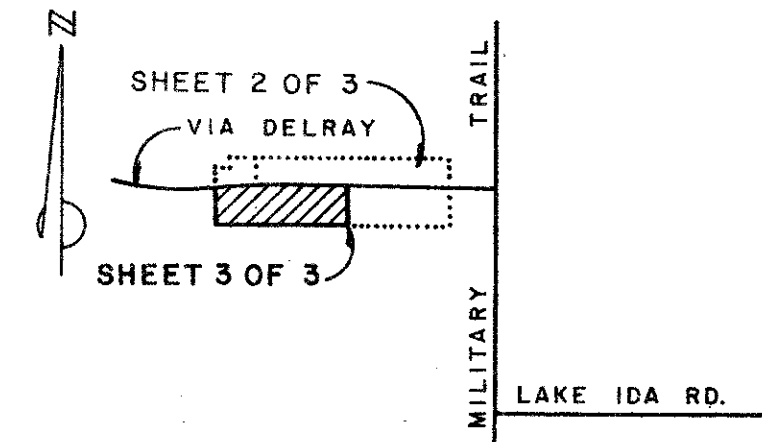
VIA DELRAY

P.O.B. NO. 2

MILITARY TRAIL



CURVE	ARC	DELTA	RADIUS
C1	46.13	19°56'54"	132.50
C2	23.50	19°56'54"	67.50
C3	29.86	3°12'47"	532.50



KEY MAP

0443-002

THE PINES OF DELRAY VILLAS P.U.D.  
(P.B. 45, PGS. 76-80)

SUBDIVISION + Casa Del Rey  
BOOK SA PAGE 170  
FLOOD ZONE B FLOOD MAP # 2050  
QUAD + 30 ZONING  
SE ZIP CODE 33445  
PUD NAME Plat 2

EWING AND SHIRLEY, INC.  
LAND SURVEYORS AND PLANNERS  
3767 Lake Worth Road-Suite 118  
Lake Worth Florida 33461  
(305)968-0421

ADD BY [Signature]  
CHECKED BY [Signature]

DRAWING NUMBER

DRAWING NUMBER

DRAWING NUMBER

PLAN HOLD CORPORATION • IRVINE, CALIFORNIA  
REORDER BY NUMBER 07548

PLAN HOLD CORPORATION • IRVINE, CALIFORNIA  
REORDER BY NUMBER 07548

PLAN HOLD CORPORATION • IRVINE, CALIFORNIA  
REORDER BY NUMBER 07548