

DRAWING NUMBER  
**53/21**

DRAWING NUMBER

DRAWING NUMBER

DRAWING NUMBER

# GLENEAGLES PLAT SIX

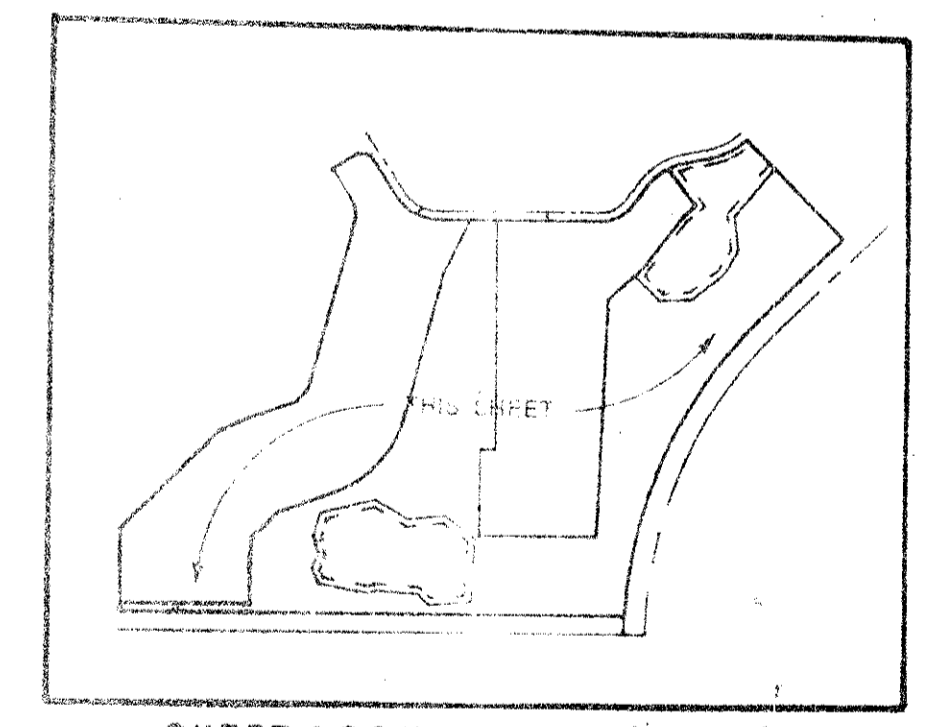
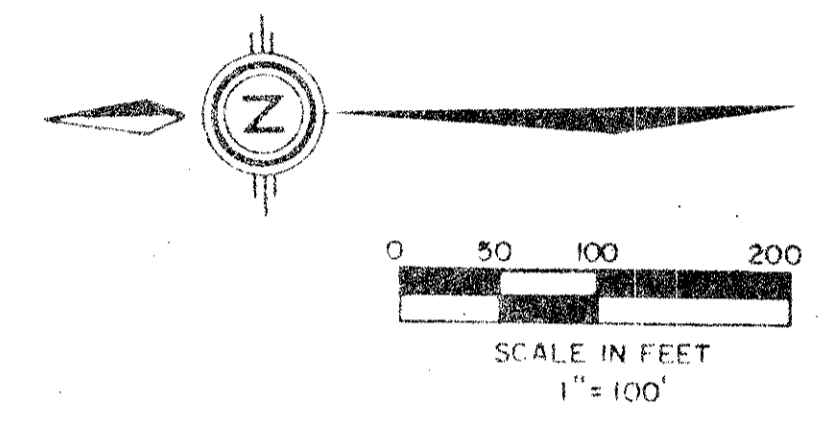
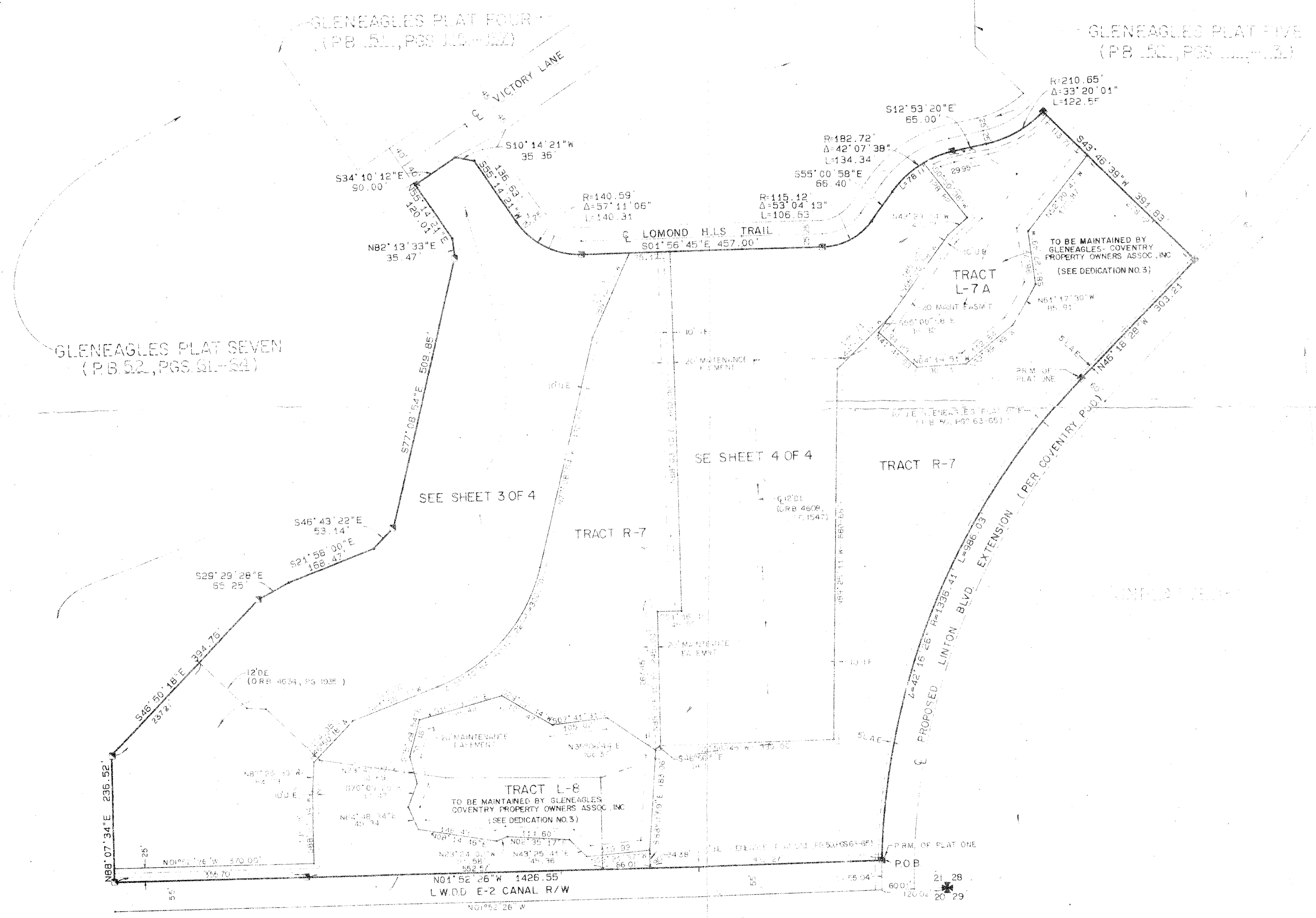
## PARCELS E AND F, PART OF GLENEAGLES, A P.U.D.

SITUATE IN SECTIONS 21 AND 28, TOWNSHIP 46 SOUTH, RANGE 42 EAST,  
PALM BEACH COUNTY, FLORIDA, BEING A REPLAT OF A PORTION  
OF GLENEAGLES PLAT ONE, (P.B. 50, P. 63 - 65).

SHEET 2 OF 4

**21**

STATE OF FLORIDA  
COUNTY OF PALM BEACH  
THIS PLAT WAS FILED FOR  
RECORD AT \_\_\_\_\_  
THIS \_\_\_\_\_ DAY OF \_\_\_\_\_  
AD, 1986 AND DULY RECORDED  
IN PLAT BOOK \_\_\_\_\_ ON PAGES  
\_\_\_\_\_ AND \_\_\_\_\_  
JOHN B. DUNKLE, CLERK  
BY: \_\_\_\_\_, D.C.



SHEET LOCATION MAP (N.T.S.)

0230-005

**53/21**

Meridian Surveying and mapping inc.		WEST PALM BEACH, FLORIDA	
DRAWN	DATE	FEB 1985	
CHECKED	SCALE	1" = 100'	
DRAWING NO.	8-123 PL. 6		
<b>GLENEAGLES PLAT SIX</b>			
SEC. 21 & 28, TWP. 46S., RGE. 42E.			