

DRAWING NUMBER
53/22

DRAWING NUMBER

DRAWING NUMBER

DRAWING NUMBER

GLENEAGLES PLAT SIX

PARCELS E AND F, PART OF GLENEAGLES, A P.U.D.

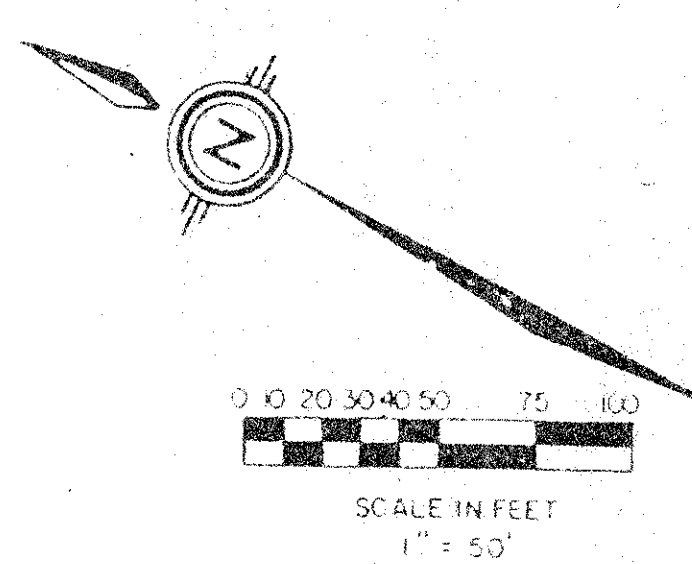
SITUATE IN SECTIONS 21 AND 28, TOWNSHIP 46 SOUTH, RANGE 42 EAST, PALM BEACH COUNTY, FLORIDA, BEING A REPLAT OF A PORTION OF GLENEAGLES PLAT ONE, (P.B. 50, P. 63 - 65).

SHEET 3 OF 4

22

GLENEAGLES PLAT FOUR (P.B. 51, PGS. 135 - 137)

STATE OF FLORIDA
COUNTY OF PALM BEACH
THIS PLAT WAS FILED FOR
RECORD AT _____
THIS _____ DAY OF _____
AD, 1986 AND DULY RECORDED
IN PLAT BOOK _____ ON PAGES
_____ AND _____
BY: JOHN B. DUNKLE, CLERK
D.C.



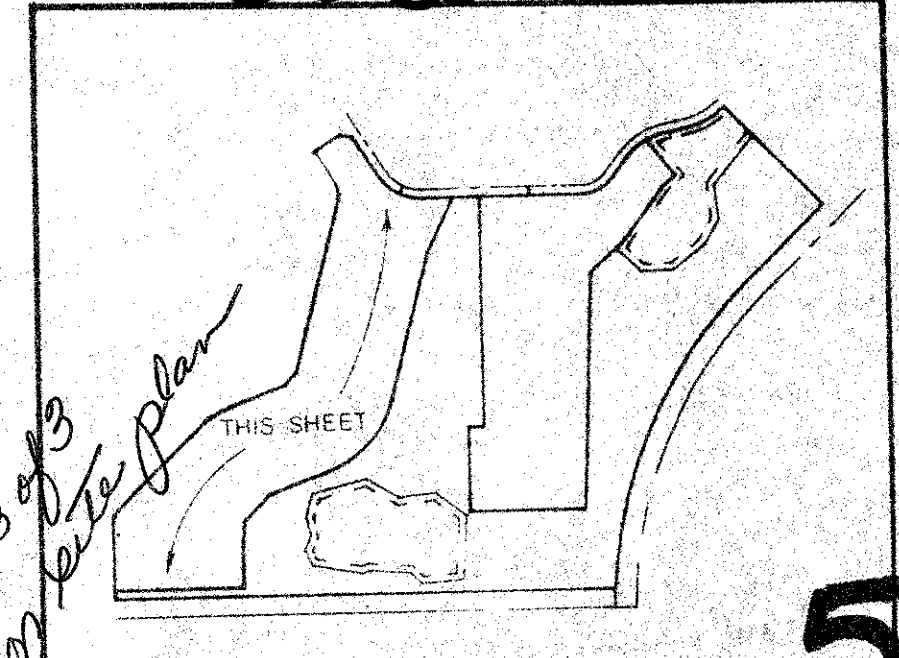
NO.	DELTA	RADIUS	LENGTH
01	57° 11' 08"	140.59'	147.31'
02	53° 04' 13"	115.12'	106.33'
03	42° 07' 36"	182.72'	134.14'
04	33° 20' 01"	210.65'	125.45'
05	2° 02' 15"	238.49'	117.35'
06	9° 46' 10"	236.43'	114.44'
07	9° 55' 16"	312.22'	147.72'
08	19° 55' 16"	197.22'	103.72'
09	12° 08' 05"	312.22'	147.72'
10	11° 28' 04"	197.22'	103.72'
11	1° 19' 04"	312.22'	147.72'
12	2° 05' 03"	204.74'	114.74'
13	9° 54' 31"	201.74'	113.74'
14	9° 54' 31"	201.74'	113.74'
15	9° 54' 31"	201.74'	113.74'
16	9° 54' 31"	201.74'	113.74'
17	9° 54' 31"	201.74'	113.74'
18	9° 54' 31"	201.74'	113.74'
19	9° 54' 31"	201.74'	113.74'
20	9° 54' 31"	201.74'	113.74'
21	9° 54' 31"	201.74'	113.74'
22	9° 54' 31"	201.74'	113.74'
23	9° 54' 31"	201.74'	113.74'
24	9° 54' 31"	201.74'	113.74'
25	9° 54' 31"	201.74'	113.74'
26	9° 54' 31"	201.74'	113.74'
27	9° 54' 31"	201.74'	113.74'
28	9° 54' 31"	201.74'	113.74'
29	9° 54' 31"	201.74'	113.74'
30	9° 54' 31"	201.74'	113.74'
31	9° 54' 31"	201.74'	113.74'
32	9° 54' 31"	201.74'	113.74'
33	9° 54' 31"	201.74'	113.74'
34	9° 54' 31"	201.74'	113.74'
35	9° 54' 31"	201.74'	113.74'
36	9° 54' 31"	201.74'	113.74'
37	9° 54' 31"	201.74'	113.74'
38	9° 54' 31"	201.74'	113.74'
39	9° 54' 31"	201.74'	113.74'
40	9° 54' 31"	201.74'	113.74'
41	9° 54' 31"	201.74'	113.74'
42	9° 54' 31"	201.74'	113.74'
43	9° 54' 31"	201.74'	113.74'
44	9° 54' 31"	201.74'	113.74'
45	9° 54' 31"	201.74'	113.74'
46	9° 54' 31"	201.74'	113.74'
47	9° 54' 31"	201.74'	113.74'
48	9° 54' 31"	201.74'	113.74'
49	9° 54' 31"	201.74'	113.74'
50	9° 54' 31"	201.74'	113.74'
51	9° 54' 31"	201.74'	113.74'
52	9° 54' 31"	201.74'	113.74'
53	9° 54' 31"	201.74'	113.74'
54	9° 54' 31"	201.74'	113.74'
55	9° 54' 31"	201.74'	113.74'
56	9° 54' 31"	201.74'	113.74'
57	9° 54' 31"	201.74'	113.74'
58	9° 54' 31"	201.74'	113.74'
59	9° 54' 31"	201.74'	113.74'
60	9° 54' 31"	201.74'	113.74'
61	9° 54' 31"	201.74'	113.74'
62	9° 54' 31"	201.74'	113.74'
63	9° 54' 31"	201.74'	113.74'
64	9° 54' 31"	201.74'	113.74'
65	9° 54' 31"	201.74'	113.74'

GLENEAGLES PLAT SEVEN
(P.B. 52, PGS. 61 - 64)

GLENEAGLES PLAT FIVE
(P.B. 52, PGS. 1 - 3)

SUBDIVISION - *Blueagles*
BOOK *53* PAGE *22*
FLOOD ZONE *B* FLOOD MAP # *2156*
QUAD # *52*
SE *33* PLAT CODE *33476*
PUD NAME *Plat 5*

TRACT R-7
0230-005



53/22

ADD. BY *[Signature]*
CHECKED BY *[Signature]*

*all these are
in
2/14/86*

Meridian Surveying and mapping inc.
WEST PALM BEACH, FLORIDA

DRAWN M.E.H. DATE FEB. 1985
CHECKED SCALE 1" = 50'
DRAWING NO. 84-123 PL. 6
GLENEAGLES PLAT SIX
SEC. 21 & 28, TWP. 46S, RGE. 42E

WATER MANAGEMENT TRACT L-8
TO BE MAINTAINED BY GLENEAGLES-
COVENTRY PROPERTY OWNERS ASSOC., INC.
SEE LEGENDATION NO. 3

20' MAINTENANCE EASEMENT

PLAN-HOLD CORPORATION • IRVINE, CALIFORNIA
REGISTERED PROFESSIONAL ENGINEER
DRAWING NUMBER