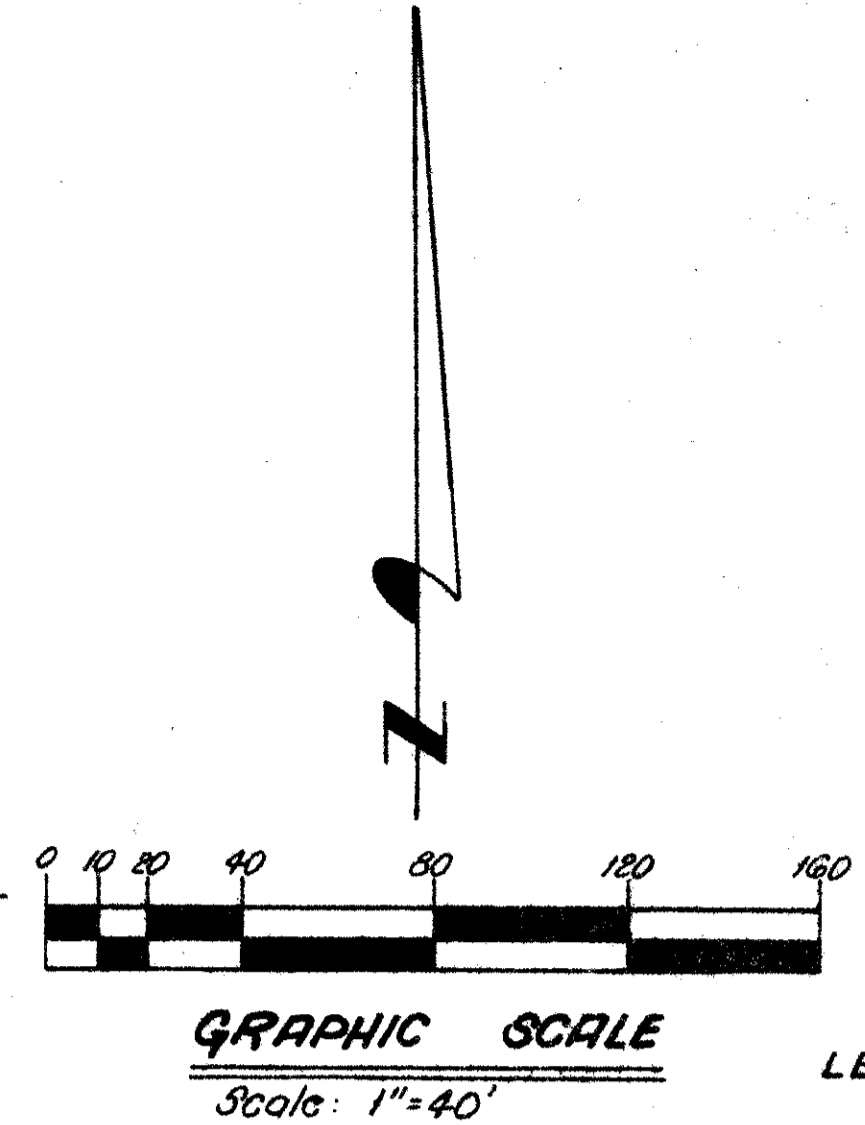
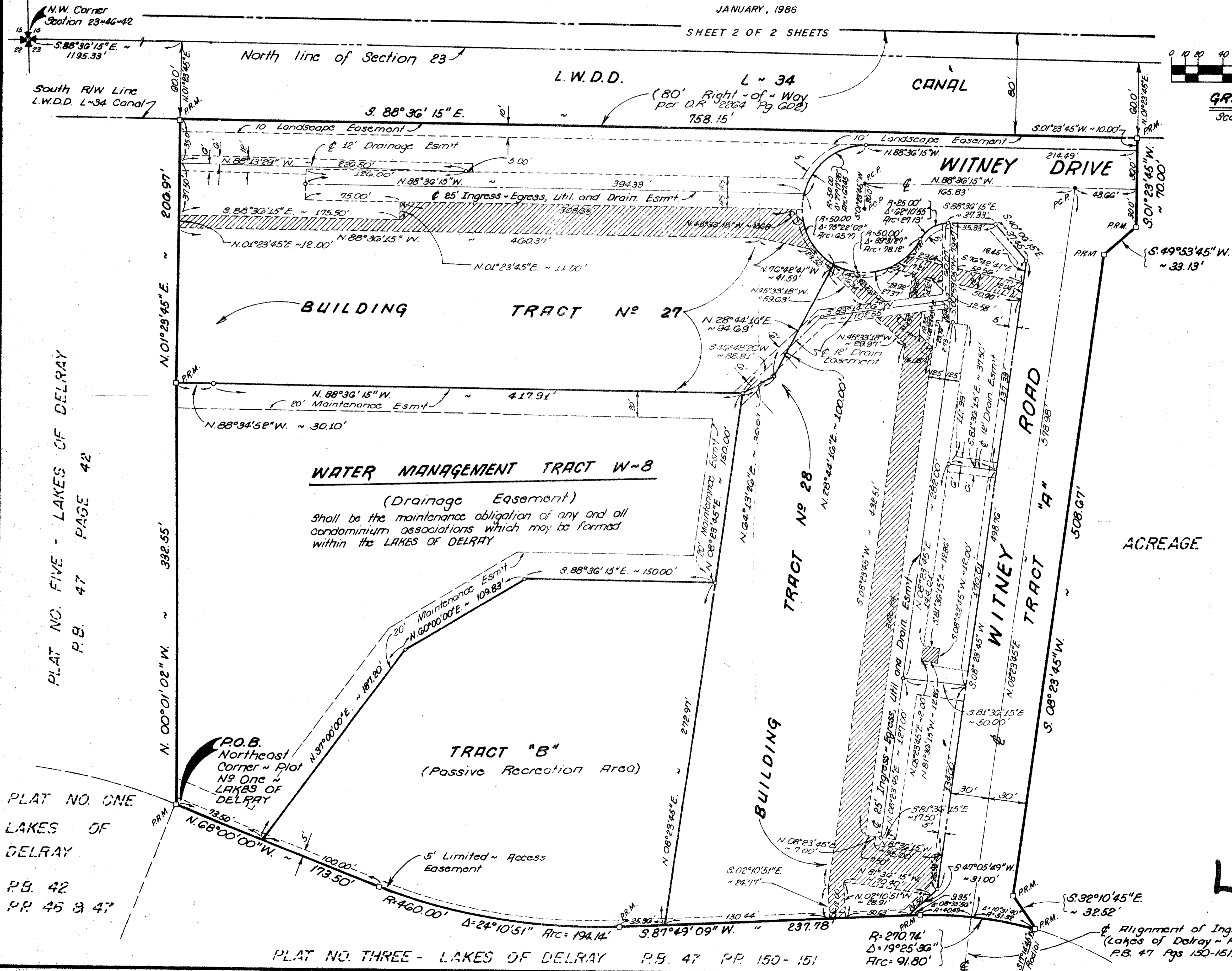


PLAT NO. FOUR  
**LAKES OF DELRAY**  
BEING A PORTION OF THE NORTHWEST ONE - QUARTER  
OF SECTION 23, TOWNSHIP 46 SOUTH, RANGE 42 EAST  
PALM BEACH COUNTY, FLORIDA

JANUARY, 1986  
SHEET 2 OF 2 SHEETS



THIS INSTRUMENT PREPARED BY:  
LEO E. NOBLE R.L.S. 3143 STATE OF FLORIDA  
**LAWSON & NOBLE, INC.**  
ENGINEERS - PLANNERS - SURVEYORS  
LAKE WORTH, FLORIDA



**SURVEYOR'S NOTES:**

1. All PRM's bear the registration number 3143 shown thus ~ □ PRM.
2. Permanent Control Points shown thus ~ • per
3. The bearings shown hereon are based on the plat of Plat No One ~ LAKES OF DELRAY as recorded in Plat Book 42 Pages 46-47, Public Records of Palm Beach County, Florida.
4. Building setback lines shall be as required by Palm Beach County Zoning Regulations.
5. No buildings or any kind of construction shall be placed on utility or drainage easements. No structures, trees or shrubs shall be placed on drainage easements. Approval of landscaping on utility easements other than water and sewer shall be only with the approval of all utilities occupying same.
6. Utility Easements shown thus ▨
7. When a Utility Easement crosses a Drainage Easement, the Drainage Easement shall take precedence.

ACREAGE

0267-005

**LAKES OF DELRAY**  
**53/33**

DRAWING NUMBER

DRAWING NUMBER

DRAWING NUMBER

PLAN HOLD CORPORATION • IRVINE, CALIFORNIA  
RECORDED BY NUMBER 07548

PLAN HOLD CORPORATION • IRVINE, CALIFORNIA  
RECORDED BY NUMBER 07548

PLAN HOLD CORPORATION • IRVINE, CALIFORNIA  
RECORDED BY NUMBER 07548

PLAT NO. FIVE - LAKES OF DELRAY  
P.B. 47 PAGE 42

PLAT NO. ONE  
LAKES OF DELRAY  
P.B. 42  
P.P. 45 & 47

PLAT NO. THREE - LAKES OF DELRAY P.B. 47 P.P. 150 - 151