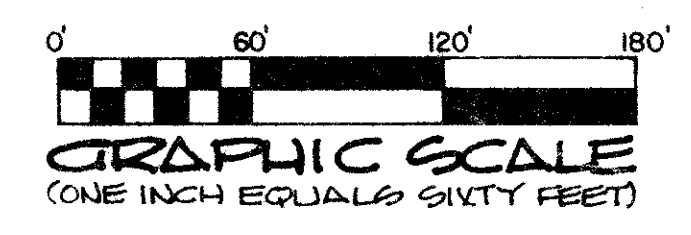
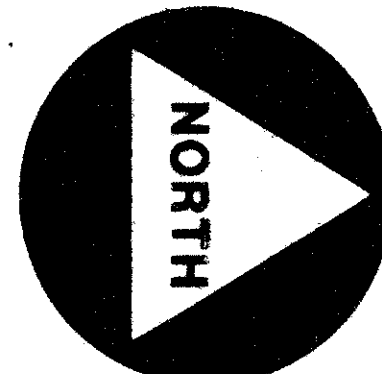


53/42



# STONEBRIDGE PLAT NO. 2

## A part of SOUTHERN MANOR P.U.D.

Lying in the east 1/2 of the southeast 1/4 of Section 35 and being a replat of a portion of the south 1/2 of Block 69, Palm Beach Farms Company, Plat No. 3, Plat Book 2, Pages 45-54 (Inclusive,) Section 36, all in Township 46 South, Range 41 East, Palm Beach County, Florida.

OCTOBER, 1985

SHEET 5 OF 7

This instrument was prepared by Wm. R. Van Campen, R.L.S., in and for the offices of Bench Mark Land Surveying and Mapping, Inc., Four Points Centre, 50 South Military Trail, Suite 200, West Palm Beach, Florida, 33415. Phone: (305) 689-2111

42

State of Florida )  
County of Palm Beach )

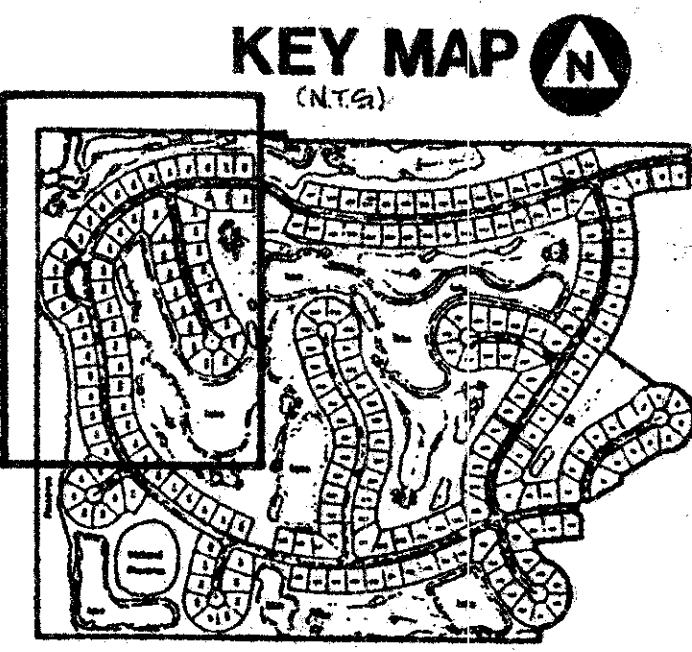
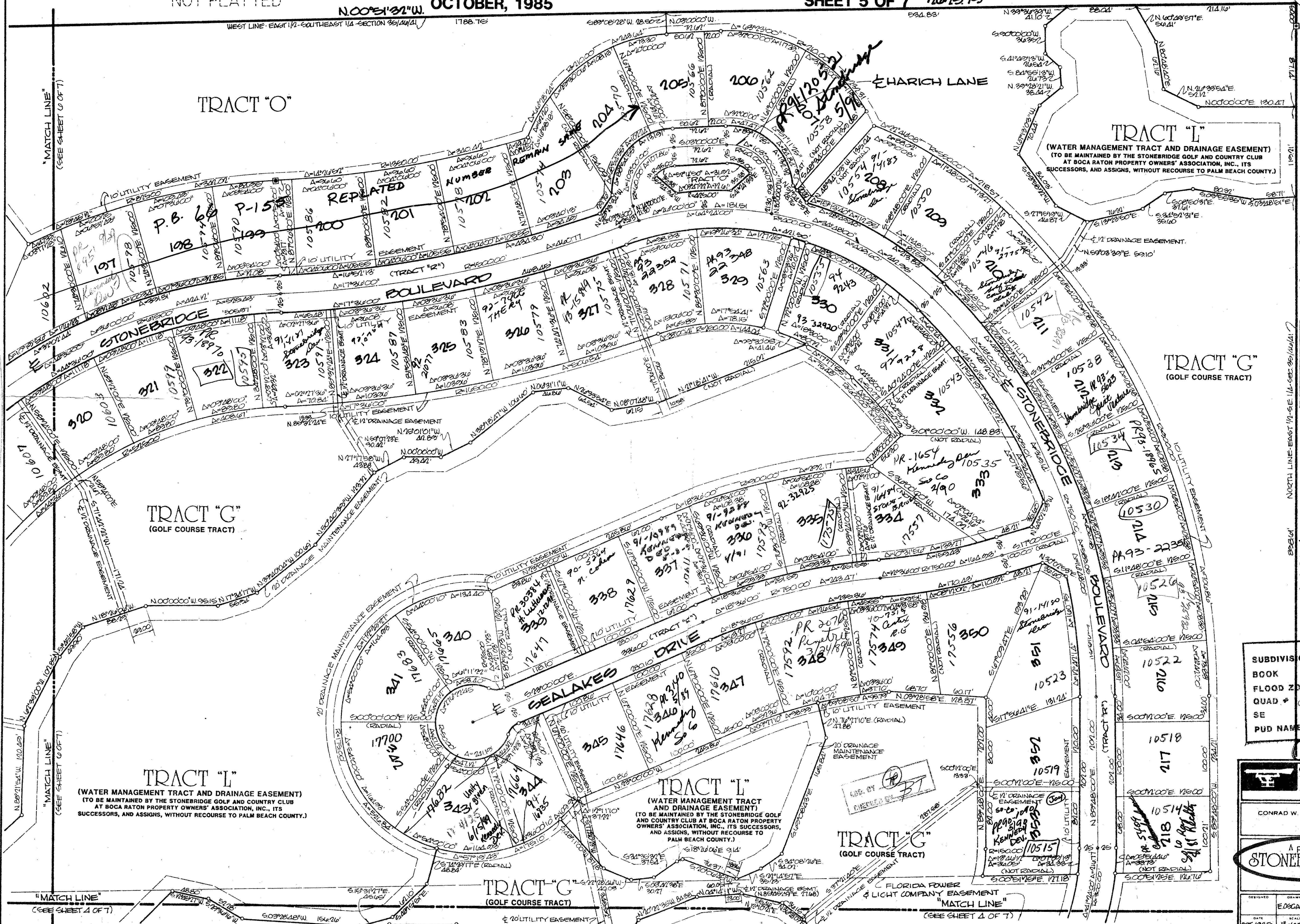
This Plat was filed for record at \_\_\_\_\_ this \_\_\_\_\_ day of \_\_\_\_\_ A.D. 1986, and duly recorded in Plat Book \_\_\_\_\_ on pages \_\_\_\_\_ thru \_\_\_\_\_

John B. Dunkle,  
Clerk of the Circuit Court.

by \_\_\_\_\_ D.C.

NOT PLATTED

NOT PLATTED



SHEET 5 OF 7

53/42  
NOT PLATTED

SUBDIVISION	Handwritten
BOOK	53
FLOOD ZONE	15
QUAD	47
SE	
PUD NAME	Handwritten

0420-002

**BENCH MARK**  
land surveying and mapping, inc.  
WEST PALM BEACH, FLORIDA

CONRAD W. SCHAEFER CONSULTING ENGINEERS, INC.  
PALM BEACH COUNTY, FLORIDA

A part of SOUTHERN MANOR P.U.D.  
**STONEBRIDGE PLAT NO. 2**  
(to be replatted and developed)

**RECORD PLAT**

DESIGNED	DRAWN	CHECKED	DATE	SCALE	APPROVED	FILE NO.	SHEET NO.
	E. OSCARD			1"=60'			5 OF 7

DRAWING NUMBER

DRAWING NUMBER

DRAWING NUMBER

DRAWING NUMBER