

DRAWING NUMBER
53/76

DRAWING NUMBER

DRAWING NUMBER

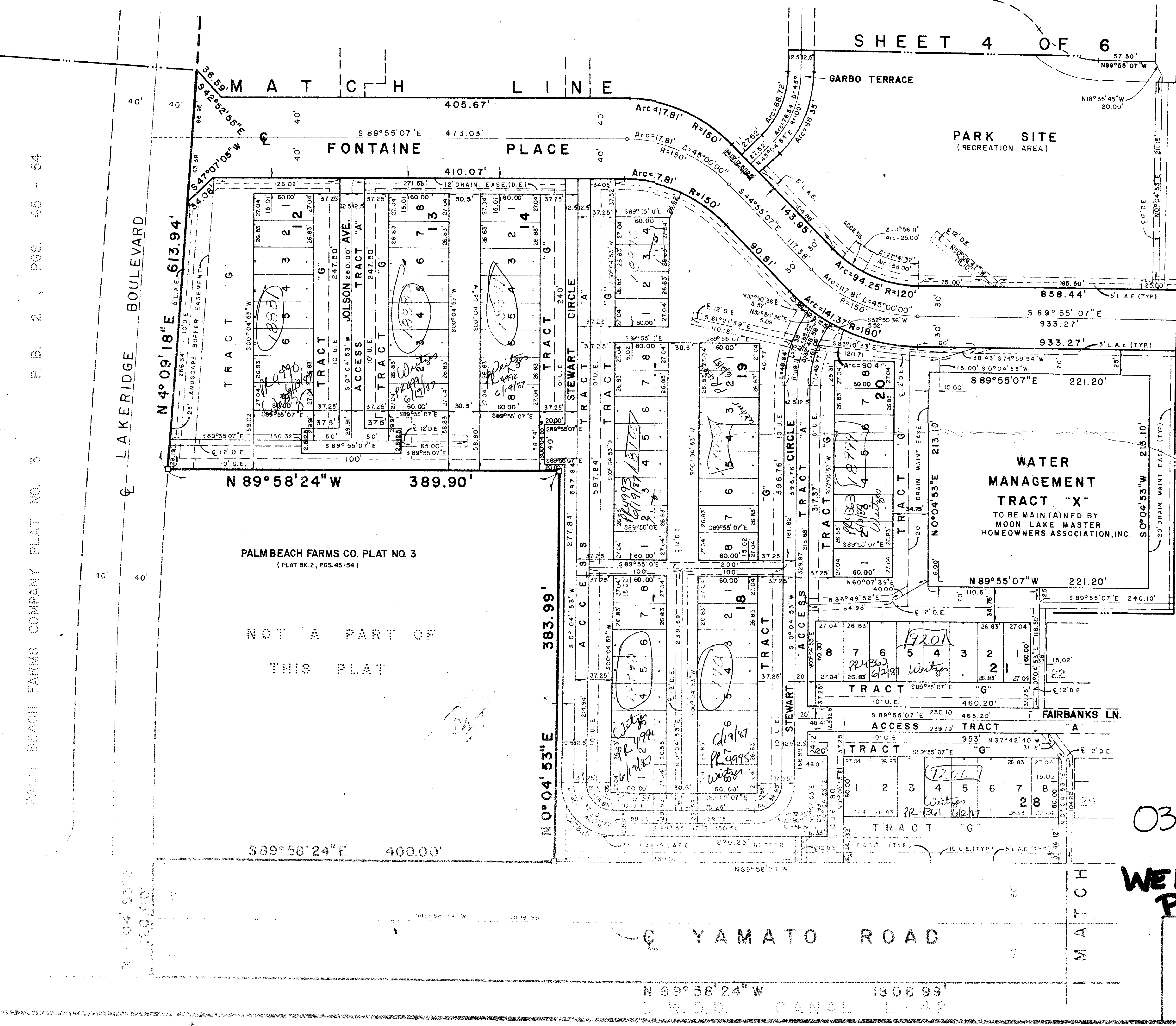
DRAWING NUMBER

WEITZER SUBDIVISION P. U. D. PLAT NO. THREE

(MOON LAKE P.U.D.)
SHEET 5 OF 6

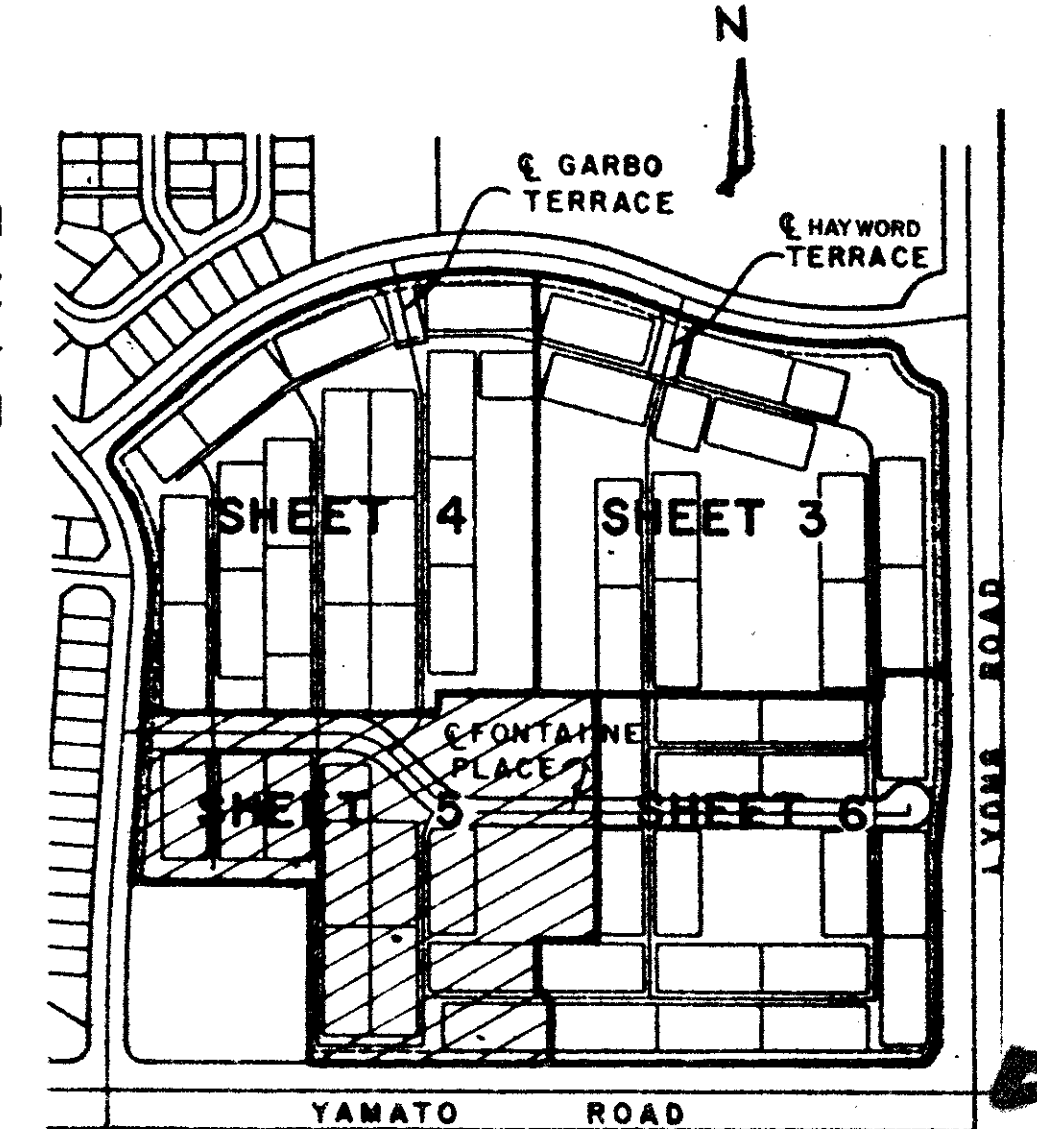
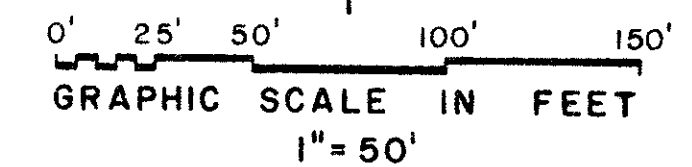
76

STATE OF FLORIDA
COUNTY OF PALM BEACH
This Plat was filed for record at _____
M. this _____ day of _____ 19____
and duly recorded in Plat Book No. _____
on Page _____
By John B. Dunkle, Clerk Circuit Court
_____ D.C.



SHEET 4 OF 6

SHEET 6 OF 6



53/76
0349-003
NOTE:
BUILDING TIES SHOWN HEREON ARE PERPENDICULAR TO CENTER LINES OF STREETS AS SHOWN.

WEITZER SUBDIVISION P.U.D. PLAT # 3

MICHAEL B. SCHORAH & ASSOCIATES, INC.
PLANNERS

1800 FOREST HILL BLVD., SUITE 205
WEST PALM BEACH, FLORIDA 33409

PALM BEACH FARMS COMPANY PLAT NO. 3 P. D. 2 PGS. 40 - 54

PLAN HOLD CORPORATION • IRVINE, CALIFORNIA
RECORDED BY NUMBER 07349