

DRAWING NUMBER
53/79

ISLES OF BOCA

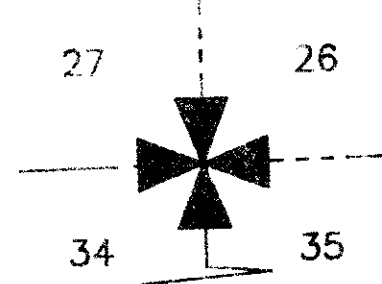
SHEET 2 OF 2

79

A REPLAT OF A PORTION OF TRACT 73 OF BOCA DEL MAR NO. 7 AS RECORDED IN PLAT BOOK 30, PAGES 210-217 P.B.C.R., LYING IN A PORTION OF SECTIONS 34 AND 35, TOWNSHIP 47 SOUTH, RANGE 42 EAST, PALM BEACH COUNTY, FLORIDA.

DECEMBER, 1985.

15.666 ACRES + OR -



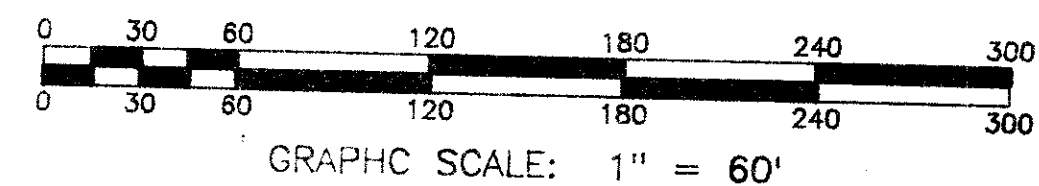
SURVEYOR'S NOTES:

THE BEARINGS SHOWN HEREON ARE REFERENCED TO THE PLAT OF "BOCA DEL MAR No. 7" (P.B. 30, PG. 210-217; P.B.C.R.)

NO BUILDINGS OR ANY KIND OF CONSTRUCTION SHALL BE PLACED ON UTILITY OR DRAINAGE EASEMENTS.

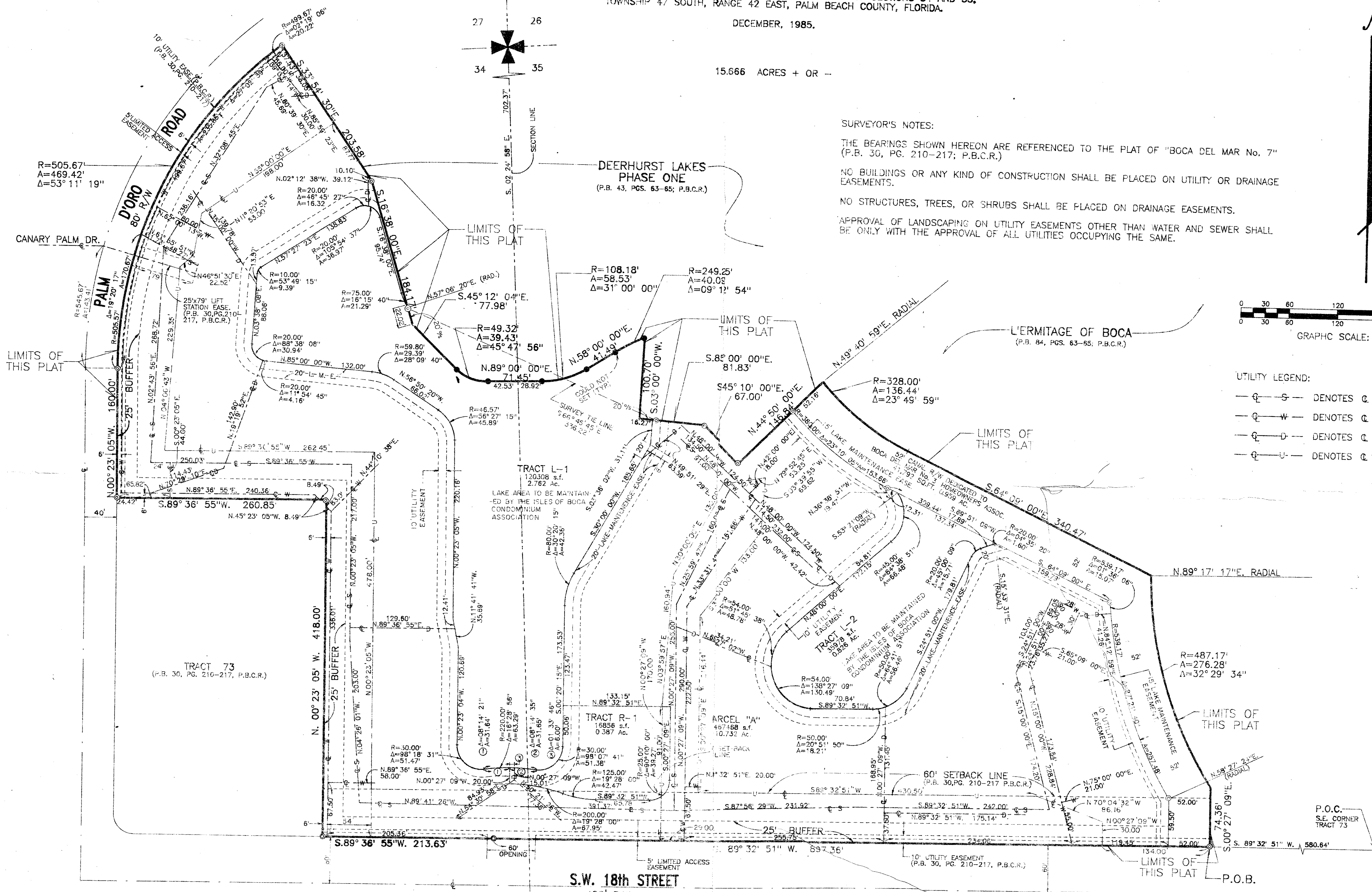
NO STRUCTURES, TREES, OR SHRUBS SHALL BE PLACED ON DRAINAGE EASEMENTS.

APPROVAL OF LANDSCAPING ON UTILITY EASEMENTS OTHER THAN WATER AND SEWER SHALL BE ONLY WITH THE APPROVAL OF ALL UTILITIES OCCUPYING THE SAME.



UTILITY LEGEND:

- S — DENOTES 12' SANITARY SEWER EASEMENT
- W — DENOTES 12' WATER MAIN EASEMENT
- D — DENOTES 12' DRAINAGE EASEMENT
- U — DENOTES 10' UTILITY EASEMENT



- LEGEND**
- ⊙ Indicates Permanent Reference Monuments set by this Plat
 - or --- Indicates Easement (see each for size and type)
 - P.O.B. Indicates point of beginning
 - P.O.C. Indicates point of commencement

Darby and Way, Inc.
PROFESSIONAL SURVEYORS AND ENGINEERS

Isles of Boca

53/79

0205-016

6300 Northeast 1st Avenue, Ft. Lauderdale, Florida 33334
(305) 771-0051

DRAWING NUMBER

DRAWING NUMBER

DRAWING NUMBER

PLAN HOLD CORPORATION • IRVINE, CALIFORNIA
ASSOCIATION NUMBER 03084
SECTION 186 OF PLAT 73 OF BOCA DEL MAR