

53/82

82

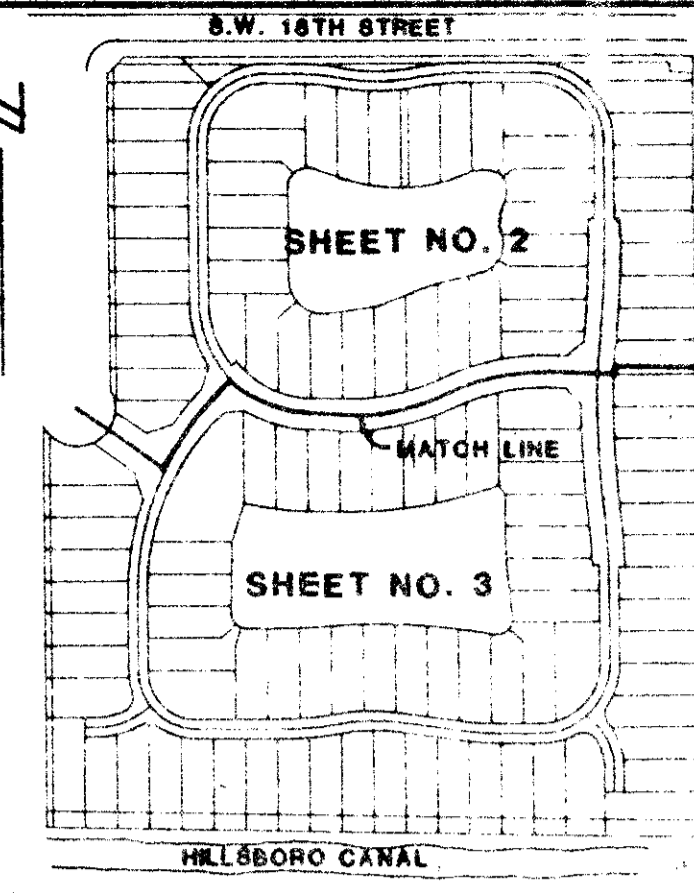
VALENCIA

BEING A RE PLAT OF TRACT "H" OF BOCA POINTE NO.2 AS RECORDED IN PLAT BOOK 47, PAGES 26 AND 27 OF THE PUBLIC RECORDS OF PALM BEACH COUNTY, FLORIDA

IN PART OF SECTION 33, TOWNSHIP 47 SOUTH, RANGE 42 EAST PALM BEACH COUNTY, FLORIDA IN THREE SHEETS SHEET NO. 3

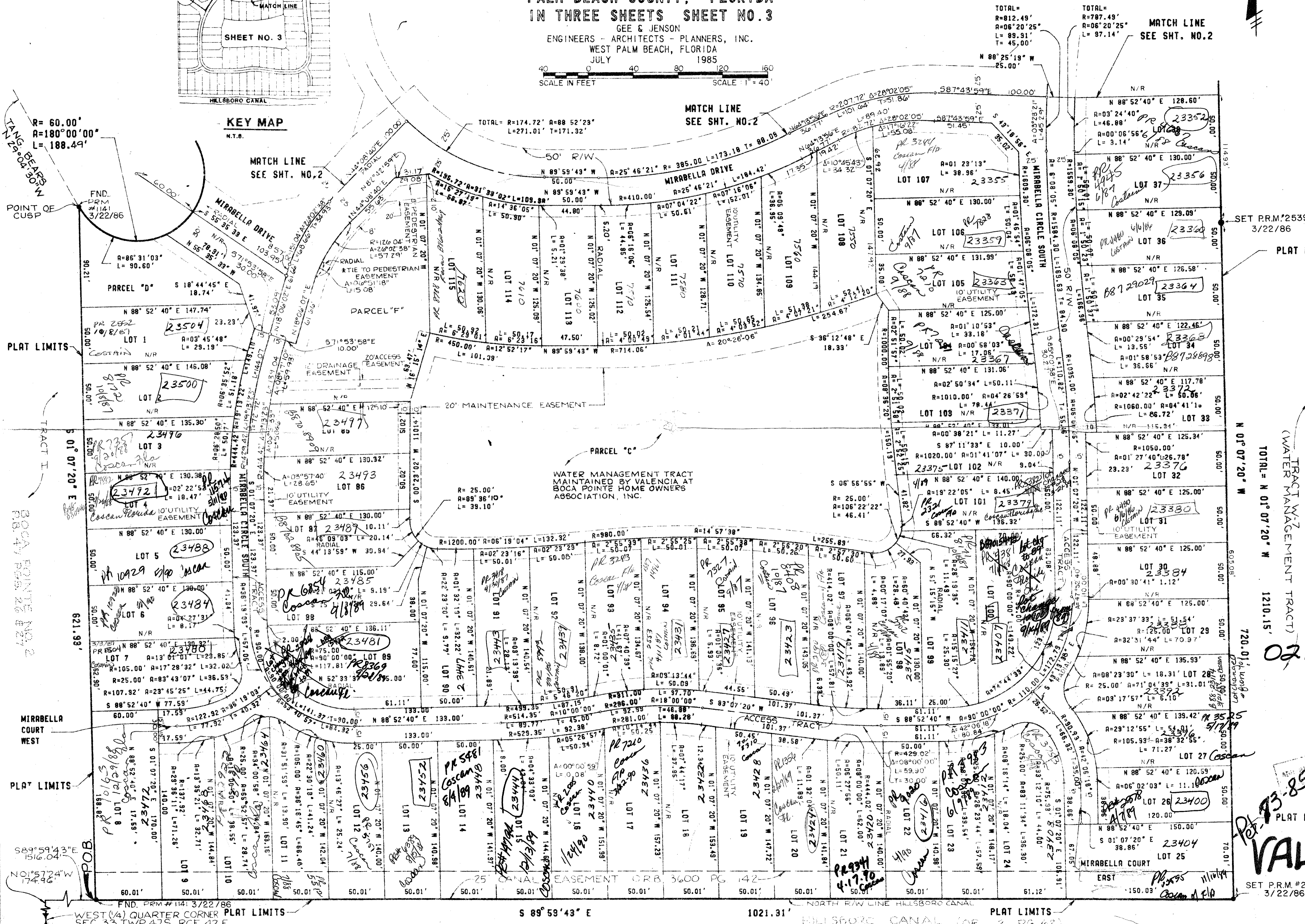
GEE & JENSON
ENGINEERS - ARCHITECTS - PLANNERS, INC.
WEST PALM BEACH, FLORIDA
JULY 1985

SCALE IN FEET SCALE 1" = 40'



KEY MAP

STATE OF FLORIDA
COUNTY OF PALM BEACH
This plat was filed for record at _____ M. this day of _____ 1985, and duly recorded in Plat Book No. _____ on Pages _____ and _____
JOHN B. DUMKLE
Clerk Circuit Court
By: _____ D.C.



DRAWING NUMBER

DRAWING NUMBER

DRAWING NUMBER

PLAT LIMITS

TRACT W-2
(WATER MANAGEMENT TRACT)
TOTAL = N 01° 07' 20" W 1210.15'

0211-006

53/82

PLAT LIMITS

VALENCIA

SET P.R.M. #2539
3/22/86