

53/96

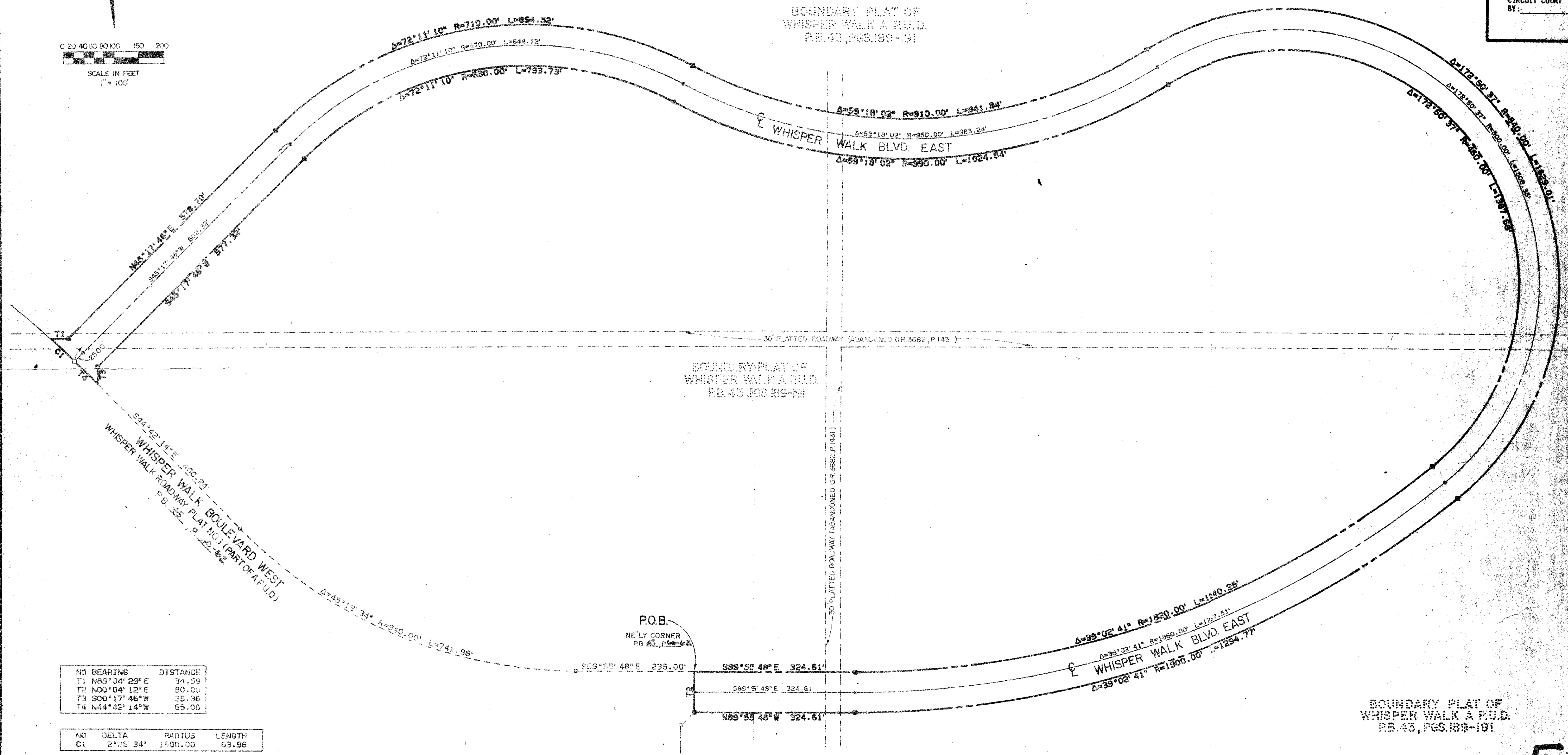
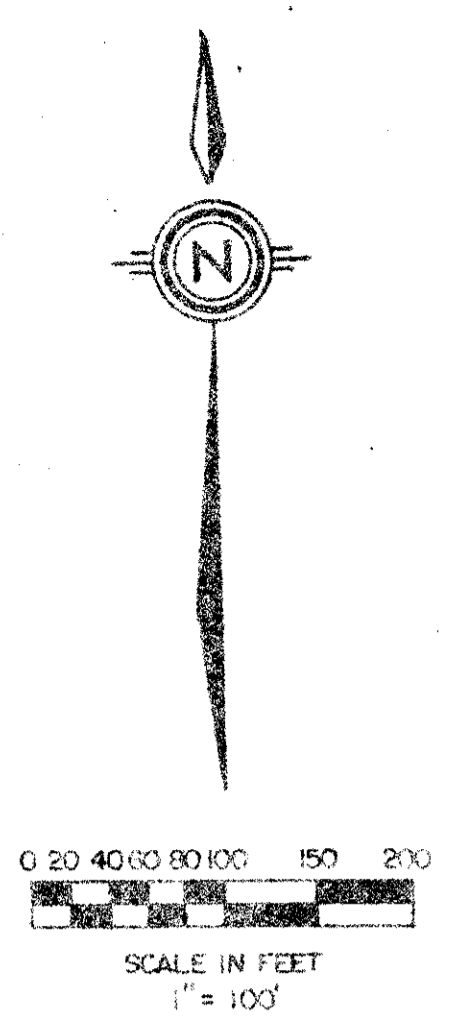
96

WHISPER WALK ROADWAY PLAT NO. 2 (PART OF A P.U.D.)

SITUATE IN SECTION 5, TOWNSHIP 47 SOUTH, RANGE 42 EAST, PALM BEACH COUNTY, FLORIDA, BEING A REPLAT OF A PORTION OF TRACT A OF THE BOUNDARY PLAT OF WHISPER WALK (P.B. 43, P. 189-191).

SHEET 3 OF 3

STATE OF FLORIDA
COUNTY OF PALM BEACH
THIS PLAT WAS FILED FOR RECORD AT THIS DAY OF AD, 1982 AND DULY RECORDED IN PLAT BOOK ON PAGES AND
JOHN B. DUMBLE, CLERK
CIRCUIT COURT
BY: DC.



NO	BEARING	DISTANCE
T1	N85°04'29"E	34.59
T2	N00°04'12"E	80.00
T3	S00°17'46"W	35.36
T4	N44°42'14"W	55.00

NO	DELTA	RADIUS	LENGTH
C1	2°25'34"	1500.00	63.96

WHISPER WALK SECTION A,
PLAT NO. 2 (PART OF A P.U.D.)
P.B. 41, P. 119-121

BOUNDARY PLAT OF
WHISPER WALK A P.U.D.
P.B. 43, PAGES 189-191

53
96

Meridian Surveying and mapping inc. WEST PALM BEACH, FLORIDA

DRAWN	M. E. H.	DATE	MARCH, 1982
CHECKED		SCALE	1" = 100'
DRAWING NO.	81-P-051		

WHISPER WALK ROADWAY
PLAT NO. 2 (PART OF A P.U.D.)

DRAWING NUMBER
PLAN HOLD CORPORATION * IRVINE, CALIFORNIA
RECORDED BY NUMBER 07548

DRAWING NUMBER
PLAN HOLD CORPORATION * IRVINE, CALIFORNIA
RECORDED BY NUMBER 07548

DRAWING NUMBER
PLAN HOLD CORPORATION * IRVINE, CALIFORNIA
RECORDED BY NUMBER 07548