

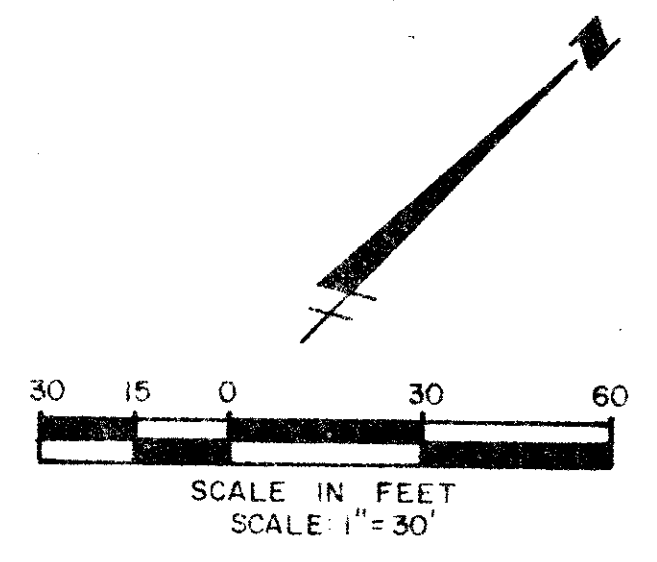
DRAWING NUMBER  
**53/105**

PLAN HOLD CORPORATION • IRVINE, CALIFORNIA  
REGISTERED PROFESSIONAL ENGINEER NUMBER 07584

# PLAT OF

# SUMMIT PARK

10



DRAWING NUMBER

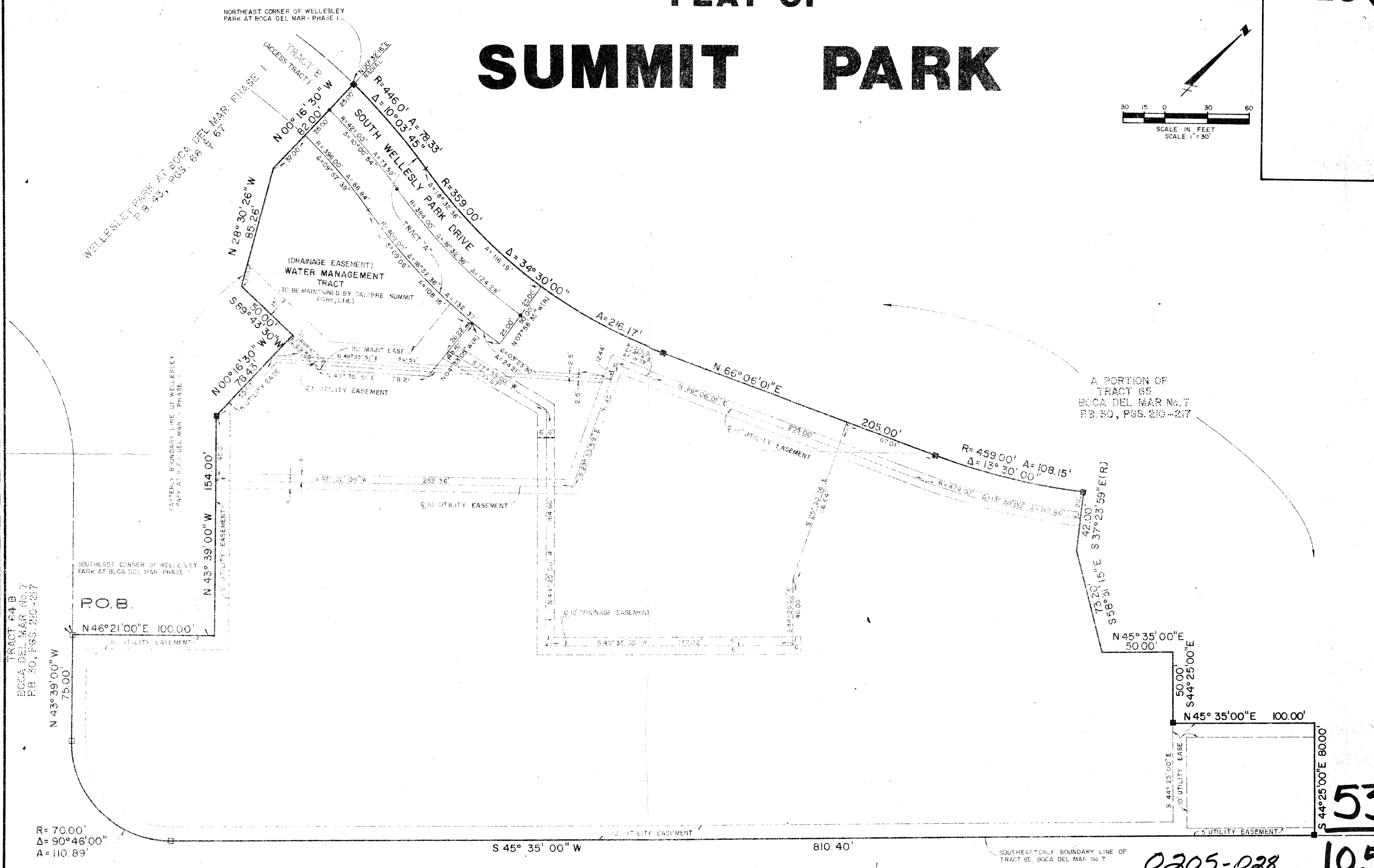
PLAN HOLD CORPORATION • IRVINE, CALIFORNIA  
REGISTERED PROFESSIONAL ENGINEER NUMBER 07584

DRAWING NUMBER

PLAN HOLD CORPORATION • IRVINE, CALIFORNIA  
REGISTERED PROFESSIONAL ENGINEER NUMBER 07584

DRAWING NUMBER

PLAN HOLD CORPORATION • IRVINE, CALIFORNIA  
REGISTERED PROFESSIONAL ENGINEER NUMBER 07584



A PORTION OF TRACT 65 BOCA DEL MAR No. 7 RB. 50, PGS. 210-217

TRACT 64B  
BOCA DEL MAR No. 7  
RB. 70, PGS. 210-217

0205-028

53

105

**METRIC ENGINEERING INC.**  
ENGINEERS - PLANNERS - SURVEYORS  
MIAMI - WEST PALM BEACH

REGISTERED  
**W.L.F.**  
N.G.  
SINCE  
W.L.E.

**GEE & JENSON**  
ENGINEERS - ARCHITECTS - PLANNERS, INC.  
CORAL SPRINGS FLORIDA

PLAT OF  
**SUMMIT PARK**  
SHEET 2 OF 2