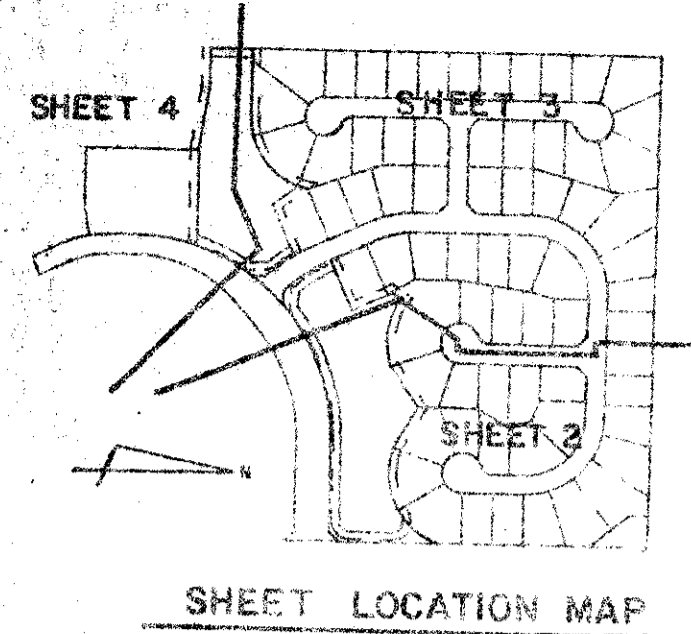


DRAWING NUMBER
53/107



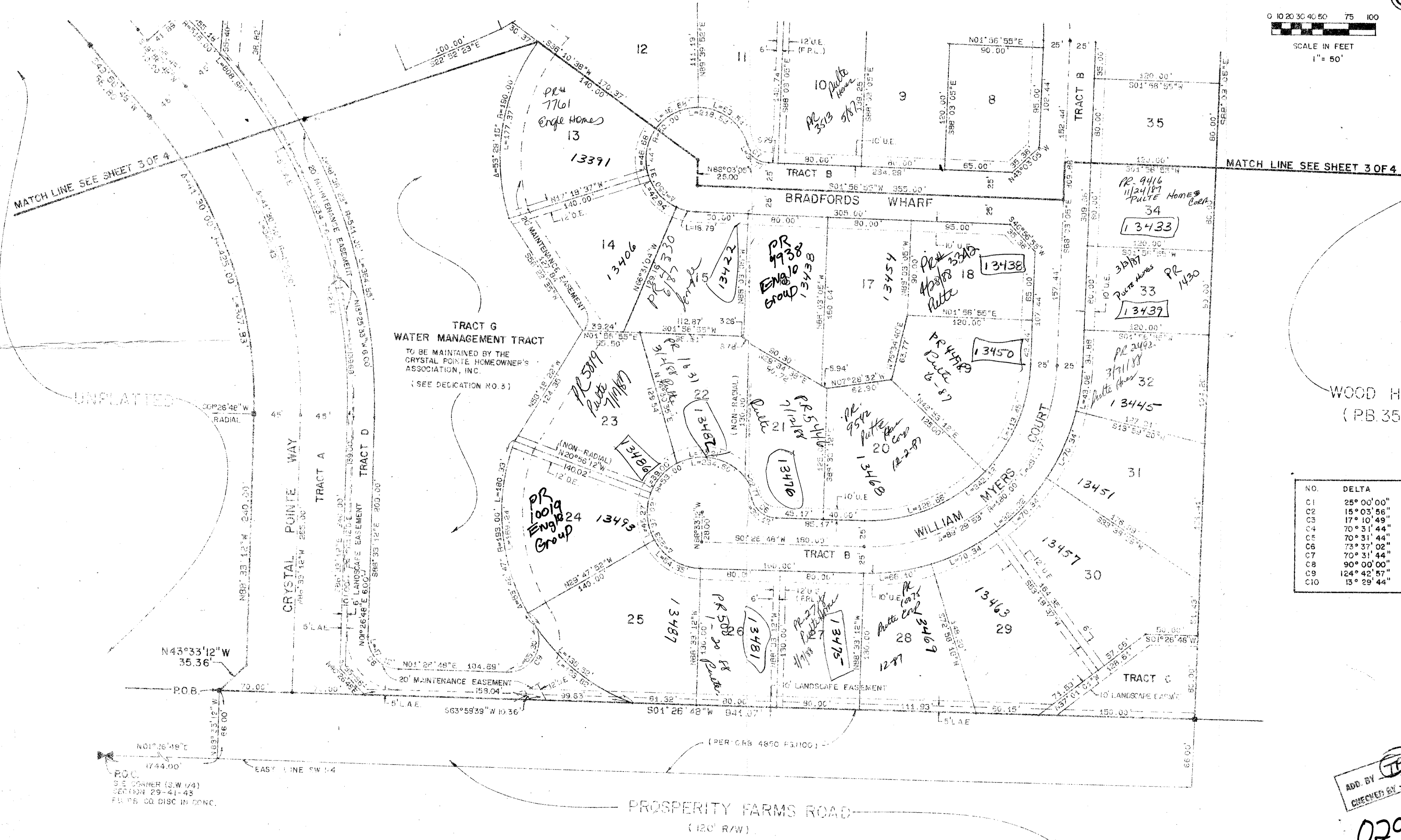
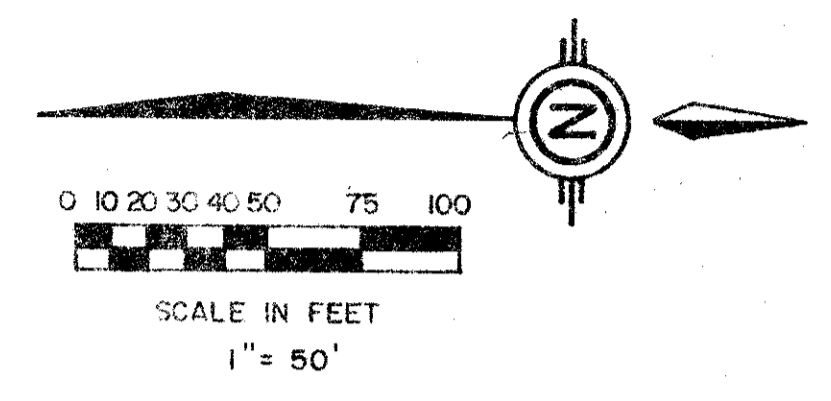
CRYSTAL POINTE PLAT ONE

PART OF CRYSTAL POINTE P.U.D.
SITUATE IN SECTION 29, TOWNSHIP 41 SOUTH, RANGE 43 EAST
PALM BEACH COUNTY, FLORIDA

SHEET 2 OF 4

107

STATE OF FLORIDA
COUNTY OF PALM BEACH
THIS PLAT WAS FILED FOR
RECORD
THIS _____ DAY OF _____
AD, 1986 AND DULY RECORDED
IN PLAT BOOK _____ ON PAGES
_____ AND _____
AND
JOHN B. DUNKLE, CLERK
BY: _____, D.C.



WOOD HILL ESTATES
(PB. 35, PGS. 40-41)

NO.	DELTA	RADIUS	LENGTH
C1	25° 00' 00"	237.36'	103.57'
C2	15° 03' 56"	297.36'	78.56'
C3	17° 10' 49"	217.94'	65.35'
C4	70° 31' 44"	25.00'	30.77'
C5	70° 31' 44"	25.00'	30.77'
C6	73° 37' 02"	25.00'	32.12'
C7	70° 31' 44"	25.00'	30.77'
C8	90° 00' 00"	30.00'	47.12'
C9	124° 42' 57"	30.00'	65.30'
C10	15° 29' 44"	243.94'	57.46'

ADD. BY **TP**
CHECKED BY **BT**

0291-001

53
107

Meridian Surveying and mapping inc. 2328 SO. CONGRESS AVE. WEST PALM BEACH, FL.

DRAWN	MHC/MEH	DATE	JAN 1986
CHECKED	WBH	SCALE	1" = 50'
DRAWING NO.	85-PI-035		

CRYSTAL POINTE PLAT ONE
PART OF
CRYSTAL POINTE P.U.D.

DRAWING NUMBER

DRAWING NUMBER

DRAWING NUMBER

PLAN HOLD CORPORATION • IRVINE, CALIFORNIA
RECORD BY NUMBER 07548